

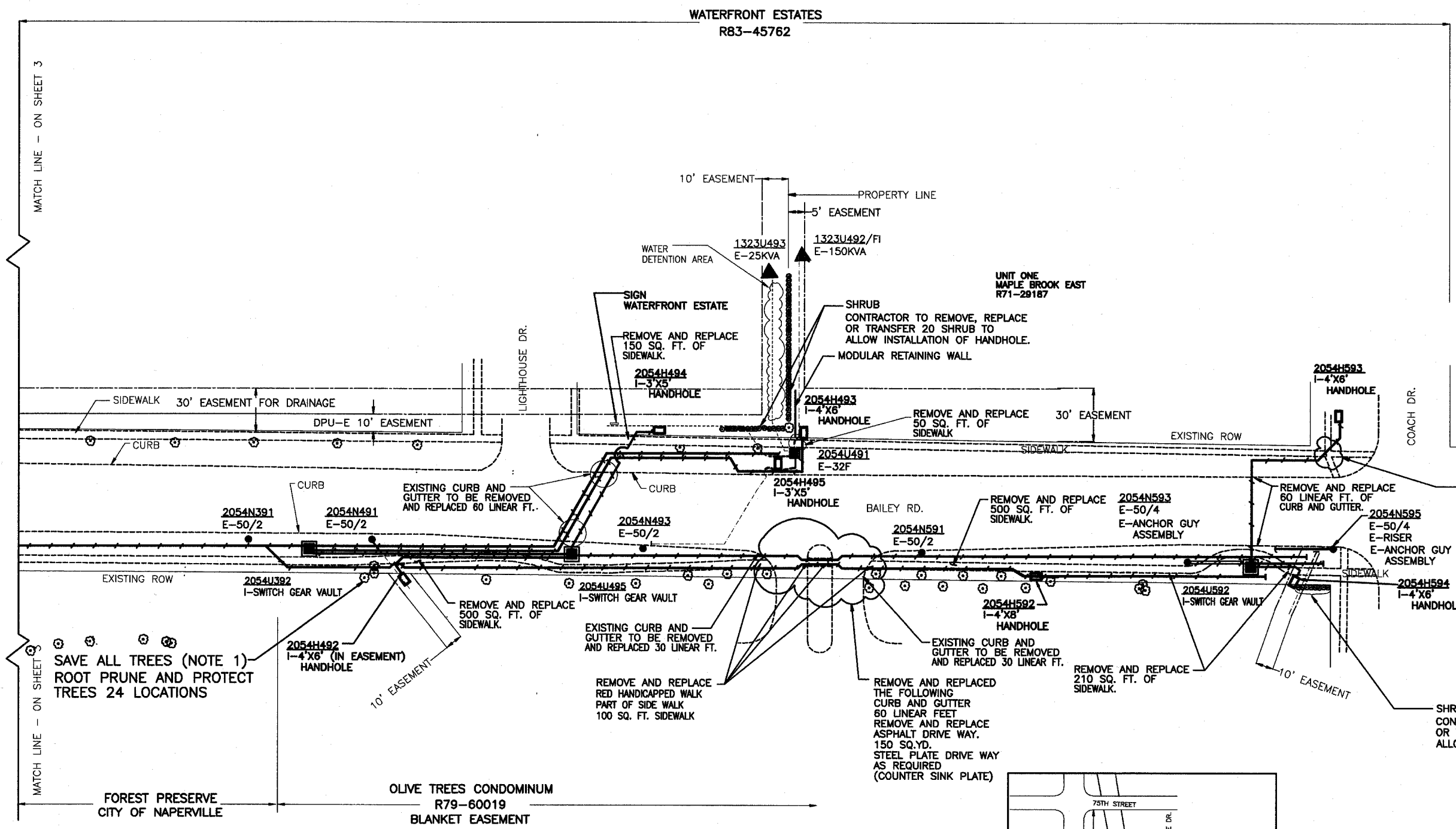
**PLAN VIEW WITH ALL FACILITIES SHOWN
(SEE PAGE 5 AND 6 FOR DETAIL LAY OUT OF DUCTBANK)**

| | | | | |
|---------------------|----------------|------------------|--------------|----------|
| F.A.U. RTE. | SECTION | COUNTY | TOTAL SHEETS | SHEET NO |
| 1545 | 00-00115-00-BR | DUPAGE | 97 | 70 |
| STA. 1+31.77 | | TO STA. 5+50.00 | | |
| FED. ROAD DIST. NO. | ILLINOIS | FED. AID PROJECT | | |

CONTRACT 83961

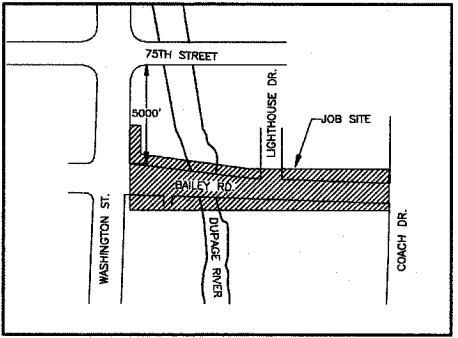
LEGEND

- EXISTING OVERHEAD**
- E-POLE
 - E-3-4/0 AAA PRI.
 - E-ANCHOR & GUY ASSEMBLY
 - E-SW. MOD., FUSE MOD.
 - ▲ E-TRANSFORMER
 - E-HANDHOLE
 - E-1-1/0 STR. AL.
 - - - E-3-4/0 STR. AL.
 - - - E-3-1/0 STR. AL.
 - E-DUCT BANK
 - - - E-CURB/SIDEWALK
 - ⊙ E-TREE/SHRUB
- INSTALL UNDERGROUND**
- I-SWITCH GEAR VAULT
 - I-HANDHOLE
 - I-DUCT BANK



SAVE ALL TREES (NOTE 1)
ROOT PRUNE AND PROTECT
TREES 24 LOCATIONS

NOTE:
1) AN ALLOWANCE HAS BEEN MADE IN THE EVENT TREES NEED TO BE PLANTED DUE TO DUCT BANK INSTALLATION.



| | | | |
|--|-------------|----------------|------------------|
| CITY OF NAPERVILLE/DEPARTMENT OF PUBLIC UTILITIES - ELECTRIC | | | |
| CALL J.U.L.I.E. 48 HRS. PRIOR TO CONSTRUCTION | | | |
| PROJECT FILE NO. | PROJECT NO. | JOB FILE NO. | PROJECT FILE NO. |
| BAILEY RD. BRIDGE DUCTBANK INSTALLATION | 2054/1323 | 2054/1323 | EU12-06-04 |
| COORDINATED WITH BRIDGE IMPROVEMENT | | REVISED BY | DATE |
| | | JK | |
| ISSUED | DATE | WORK ORDER NO. | DATE |
| | 06-16-07 | 58199 | |
| ENGINEER | RPS | SCALE | DATE |
| | | 1"=30' | |
| REVISION | | | |