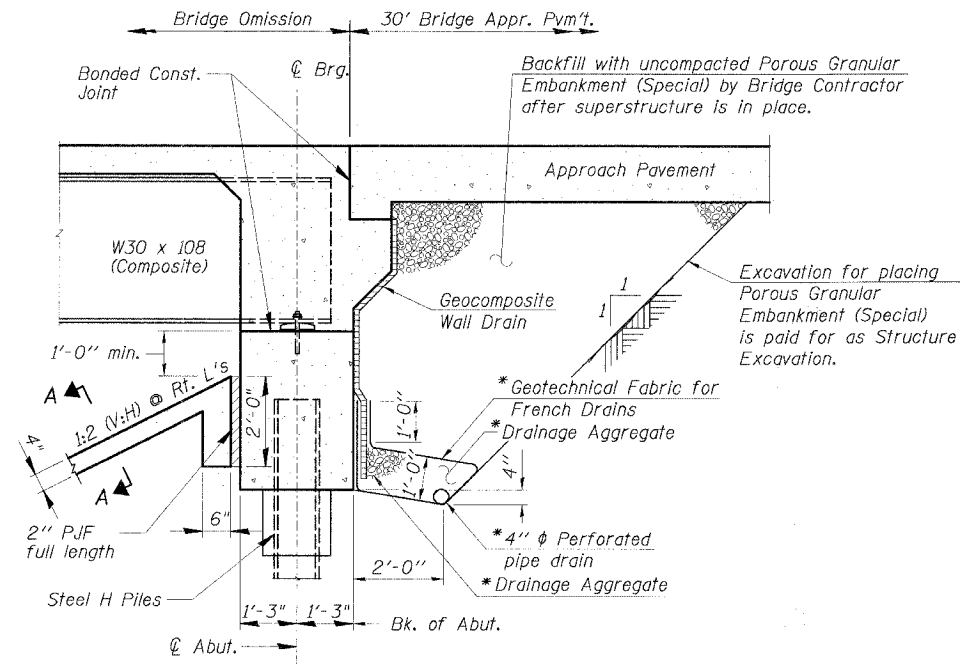


GENERAL NOTES

- Fasteners shall be AASHTO M164 Type 1, mechanically galvanized bolts (in painted areas and M164 Type 3 in unpainted areas). Bolts 1/8 in. ϕ , holes 15/16 in. ϕ , unless otherwise noted.
- Calculated weight of Structural Steel = 89620 Lb. Grade 50
= 6080 Lb. Grade 36
- No field welding is permitted except as specified in the contract documents.
- Reinforcement bars shall conform to the requirements of ASTM A 706 Gr 60 (IL Modified). See Special Provisions
- Reinforcement bars designated (E) shall be epoxy coated.
- Bearing set surfaces shall be constructed or adjusted to the designated elevations within a tolerance of 1/8 in. (0.01 ft.). Adjustment shall be made either by grinding the surface or by shimming the bearings.
- The existing structural steel coating contains lead. The contractor shall take appropriate precautions to deal with the presence of lead on this project.
- The Inorganic Zinc Rich Primer / Acrylic / Acrylic Paint System shall be used for shop and field painting of new structural steel except where otherwise noted. The color of the final finish coat for all interior steel surfaces shall be gray, Munsell No. 5B 7/1. The color of the final finish coat for the exterior and bottom flange of the fascia beams shall be Interstate Green, Munsell No. 7.5G 4/8. See Special Provision for "Cleaning and Painting New Metal Structures".
- Layout of slope protection system may be varied in the field to suit ground conditions as directed by the Engineer.
- The embankment configuration shown shall be the minimum that must be placed and compacted prior to construction of the abutments.
- The Contractor shall drive test piles to 110% of the nominal required bearing specified in production locations at substructures specified or approved by the Engineer before ordering the remainder of piles.
- Load carrying components designated "NTR" shall conform to the Supplemental Requirements for Notch Toughness, Zone 2.
- Two 1/8 in. adjusting shims shall be provided for each bearing in addition to all other plates or shims and placed as shown on bearing details.

PROJECT NO.	SECTION	DATE	REVISIONS	SHEET NO.
03-00019-00-BR	DUPAGE	35		35 SHEETS
Contract #83965				

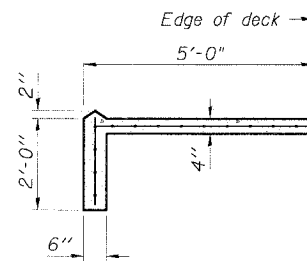


*Included in the cost of Pipe Underdrains for Structures.

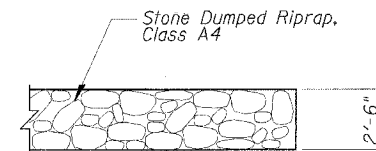
All drainage components shall extend inside face to inside face of each wingwall except an outlet pipe shall extend until intersecting with the side slopes. The pipes shall drain into concrete headwalls. (See Article 601.05 of the Standard Specifications and Highway Standard 601101).

SECTION THRU INTEGRAL ABUTMENT

(Horiz. dim. @ Rt. L's)



SECTION A-A



SECTION B-B

TOTAL BILL OF MATERIAL

ITEM	UNIT	SUPER	SUB	TOTAL
Porous Granular Embankment (Special)	Cu. Yd.		100	100
Stone Dumped Riprap, Class A4	Sq. Yd.			190
Removal of Existing Structures	Each	1		1
Structure Excavation	Cu. Yd.		320	320
Concrete Structures	Cu. Yd.	200.6		200.6
Bridge Deck Grooving	Sq. Yd.	520		520
Protective Coat	Sq. Yd.	710		710
Furnishing & Erecting Structural Steel	L. Sum	1		1
Stud Shear Connectors	Each	2595		2595
Reinforcement Bars, Epoxy Coated	Pound.	46360	11420	57780
Slope Walls 4 Inch	Sq. Yd.		210	210
Furnishing Steel Piles HP10x42	Foot		575	575
Furnishing Steel Piles HP12x53	Foot		535	535
Driving Piles	Foot		1110	1110
Test Pile Steel HP10x42	Each		2	2
Test Pile Steel HP12x53	Each		2	2
Name Plates	Each	1		1
Geocomposite Wall Drain	Sq. Yd.		72	72
Pipe Underdrain for Structures, 4"	Foot		128	128
Underwater Structure Excavation Protection Location 1	Each		1	1
Underwater Structure Excavation Protection Location 2	Each		1	1
Drainage Scupper DS-12	Each	4		4
Pile Shoes	Each		20	20
Bar Splicers	Each	64		64

GENERAL NOTES AND DETAILS

TIMBER EDGE DRIVE OVER SALT CREEK
DuPAGE COUNTY
F.A. ROUTE 7, SEC. 03-00019-00-BR
STATION 103+31.33
STRUCTURE NO. 022-6000

CTE CHRISTOPHER B. BURKE
ENGINEERING LTD.
9575 West Higgins Road, Suite 600
Rosemont, Illinois 60018

REVISIONS		DATE	DRAWING NUMBER
NAME	DATE		
			S-2