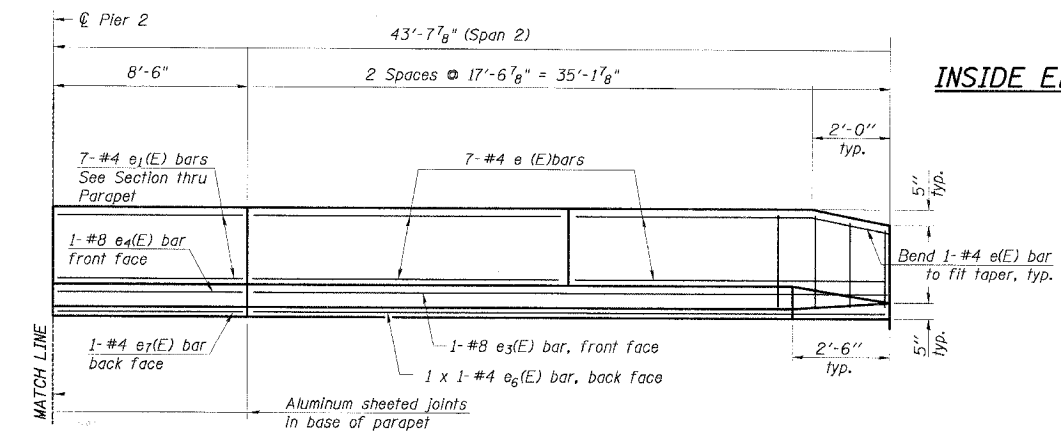


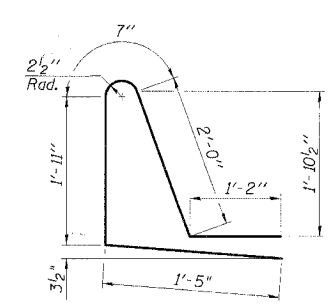
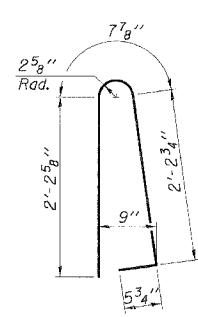
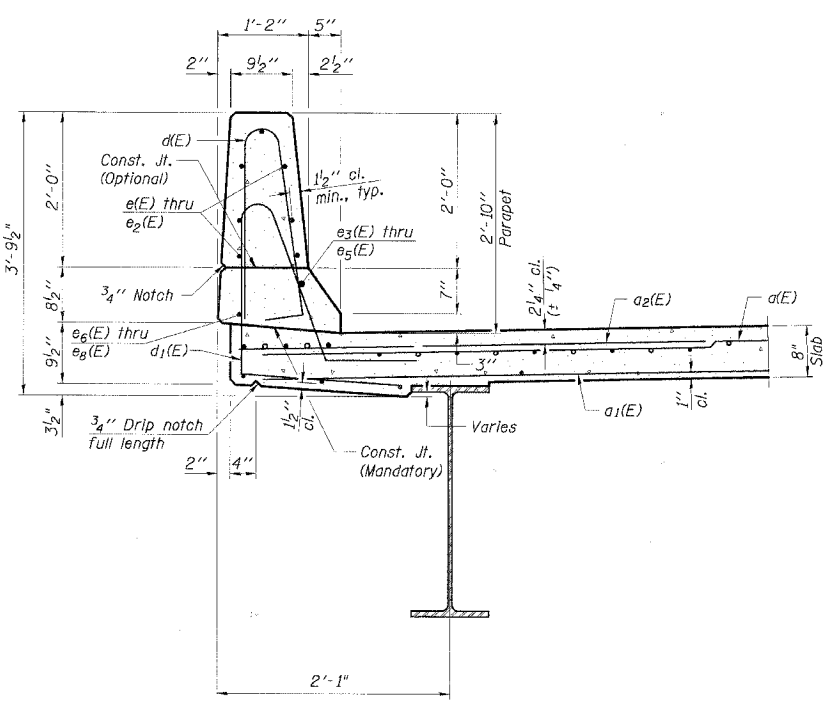
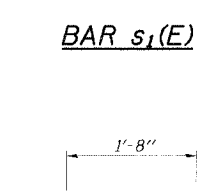
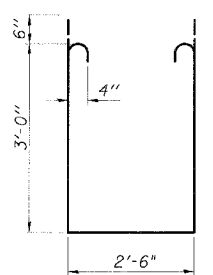
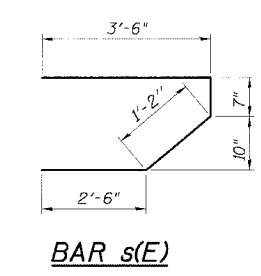
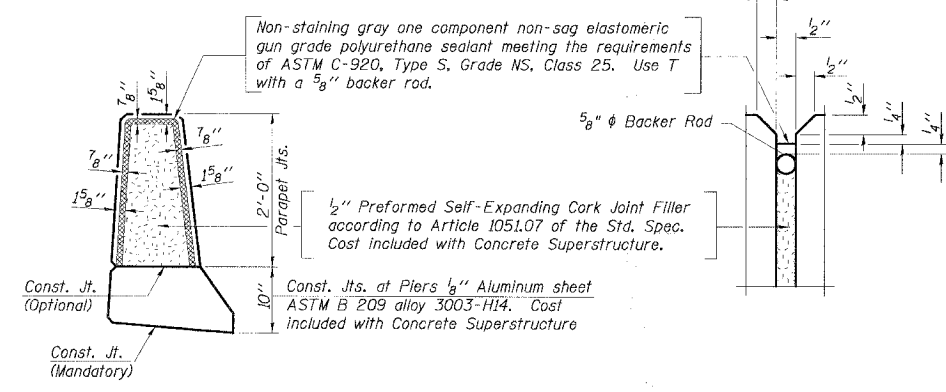
SUPERSTRUCTURE BILL OF MATERIAL

Bar	No.	Size	Length	Shape
a(E)	287	#5	34'-6"	
a1(E)	207	#5	33'-10"	
a2(E)	280	#6	6'-0"	
a3(E)	32	#5	2'-0"	
a4(E)	4	#5	39'-10"	
b(E)	190	#5	32'-7"	
b1(E)	74	#6	33'-9"	
b2(E)	152	#5	40'-3"	
d(E)	342	#5	5'-7"	
d1(E)	342	#5	7'-1"	
e(E)	56	#4	17'-3"	
e1(E)	56	#4	8'-2"	
e2(E)	42	#4	16'-11"	
e3(E)	4	#8	34'-10"	
e4(E)	8	#8	8'-2"	
e5(E)	4	#8	27'-8"	
e6(E)	4	#4	34'-10"	
e7(E)	8	#4	8'-2"	
e8(E)	4	#4	26'-9"	
s(E)	76	#5	7'-9"	
s1(E)	76	#4	9'-6"	
m(E)	4	#6	38'-6"	
m1(E)	6	#6	40'-3"	
m2(E)	20	#6	11'-9"	
m3(E)	8	#6	8'-6"	
m4(E)	4	#6	2'-0"	
v(E)	68	#5	3'-4"	

Reinforcement Bars, Epoxy Coated	Pound	46,360
Concrete Superstructure	Cu. Yds.	200.6
Bar Splicer	Each	64



MIN. BAR LAP	
#4	1'-4"
#8	3'-5"



PARAPET DETAILS
 TIMBER EDGE DRIVE OVER SALT CREEK
 DUPAGE COUNTY
 F.A. ROUTE 7, SEC. 03-00019-00-BR
 STATION 103+31.33
 STRUCTURE NO. 022-6000

**CHRISTOPHER B. BURKE
 ENGINEERING LTD.**
 9575 West Higgins Road, Suite 600
 Rosemont, Illinois 60018

REVISIONS	NAME	DATE	DRAWING NUMBER
			S-7