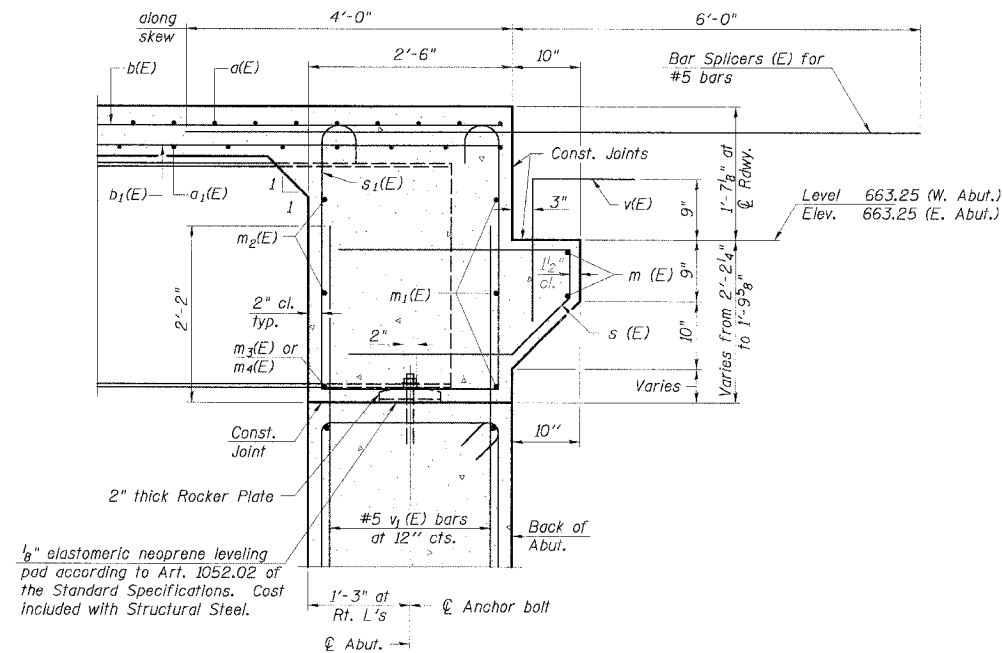


DIAPHRAGM ELEVATION AT ABUTMENT

Notes:
 Reinforcement bars in diaphragm are billed with superstructure on sheet S-7.
 Concrete in diaphragm is included with Concrete Superstructure on sheet S-7.
 For details of bars s(E) & s1(E) see sheet S-7.
 The s(E) and s1(E) bars shall be placed parallel to the beams. Spacing for these bars shall be at right angles to the beams.
 The s(E) and s1(E) bars shall be placed along skew.

MIN. BAR LAP

#6 bar = 2'-9"



SECTION A-A

Dimensions at right angles to abutment, except as shown.

SUPERSTRUCTURE DETAILS

TIMBER EDGE DRIVE OVER SALT CREEK
 DuPAGE COUNTY
 F.A. ROUTE 7, SEC. 03-00019-00-08
 STATION 103+31.33
 STRUCTURE NO. 022-6000

CHRISTOPHER B. BURKE
 ENGINEERING LTD.
 9575 West Higgins Road, Suite 600
 Rosemont, Illinois 60018

REVISIONS		DATE	DRAWING NUMBER
NAME			
			S-8