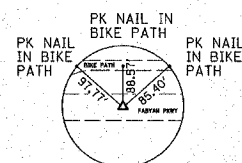
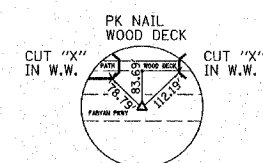


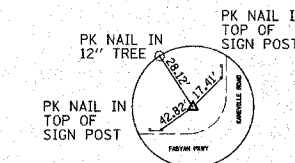
P.C. STA. 13+02.48
N. 3094.093332
E. 3456.036034



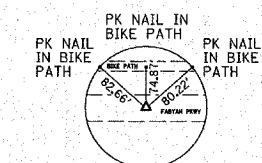
P.I. STA. 16+15.59
N. 3171.670857
E. 3759.389416



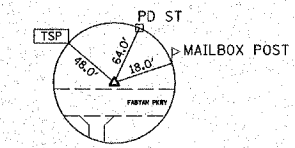
P.R.C. STA. 19+27.31
N. 3297.733762
E. 4046.007089



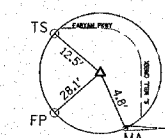
P.I. STA. 24+26.11
N. 3498.55809
E. 4502.597770



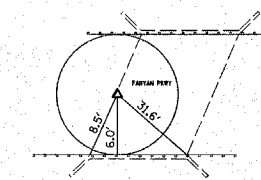
P.T. STA. 28+57.07
N. 3266.930257
E. 4944.360316



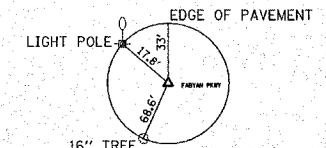
PK NAIL
21.83' LT. STA. 8+37.35 (RAN #2)
N. 3000.000000
E. 3000.000000



"X" IN CONC.
45.18' RT. STA. 13+86.22 (RAN #3)
N. 3071.400000
E. 3546.162000



PK NAIL
24.51' RT. STA. 18+67.23 (RAN #4)
N. 3251.395000
E. 4000.340000



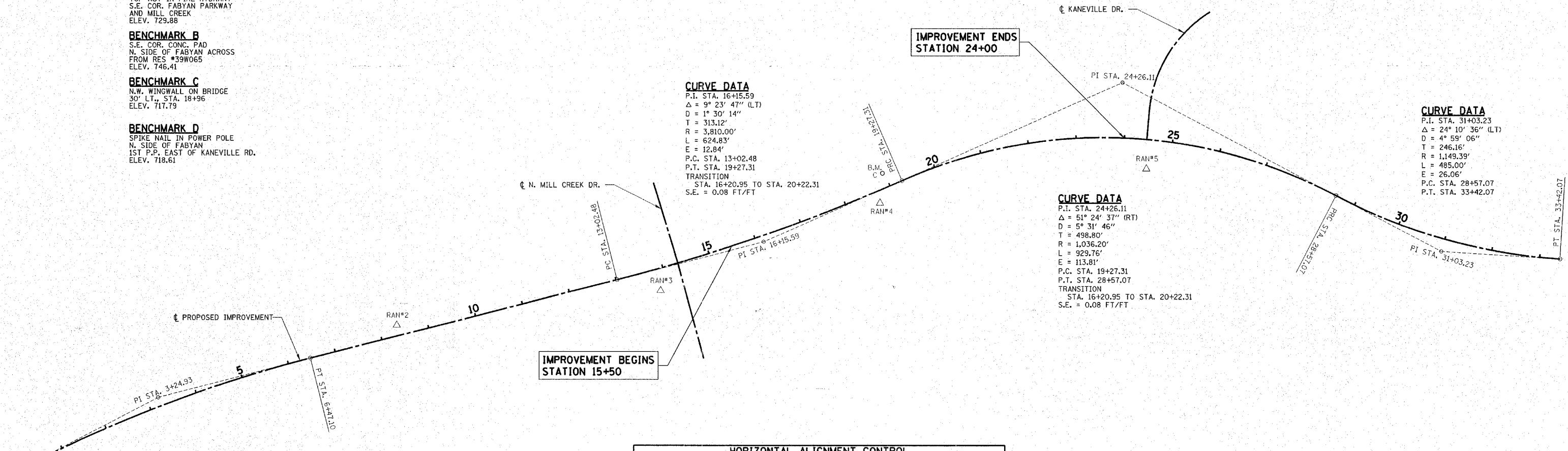
IR W/ CAP
59.96' RT. STA. 24+50.97 (RAN #5)
N. 3321.430000
E. 4551.905000

- BENCHMARK A**
TOP NUT IN FIRE HYDRANT
S.E. COR. FABYAN PARKWAY
AND MILL CREEK
ELEV. 729.88
- BENCHMARK B**
S.E. COR. CONC. PAD
N. SIDE OF FABYAN ACROSS
FROM RES #39W065
ELEV. 746.41
- BENCHMARK C**
N.W. WINGWALL ON BRIDGE
30' LT., STA. 18+96
ELEV. 717.79
- BENCHMARK D**
SPIKE NAIL IN POWER POLE
N. SIDE OF FABYAN
1ST P.P. EAST OF KANEVILLE RD.
ELEV. 718.61

CURVE DATA
P.I. STA. 16+15.59
 $\Delta = 9^\circ 23' 47''$ (LT)
D = 1° 30' 14"
T = 313.12'
R = 3,810.00'
L = 624.83'
E = 12.84'
P.C. STA. 13+02.48
P.T. STA. 19+27.31
TRANSITION
STA. 16+20.95 TO STA. 20+22.31
S.E. = 0.08 FT/FT

CURVE DATA
P.I. STA. 24+26.11
 $\Delta = 51^\circ 24' 37''$ (RT)
D = 5° 31' 46"
T = 498.80'
R = 1,036.20'
L = 929.76'
E = 113.81'
P.C. STA. 19+27.31
P.T. STA. 28+57.07
TRANSITION
STA. 16+20.95 TO STA. 20+22.31
S.E. = 0.08 FT/FT

CURVE DATA
P.I. STA. 31+03.23
 $\Delta = 24^\circ 10' 36''$ (LT)
D = 4° 59' 06"
T = 246.16'
R = 1,149.39'
L = 485.00'
E = 26.06'
P.C. STA. 28+57.07
P.T. STA. 33+42.07



CURVE DATA
P.I. STA. 3+24.93
 $\Delta = 12^\circ 56' 44''$ (RT)
D = 2° 00' 02"
T = 324.93'
R = 2,864.00'
L = 647.10'
E = 18.37'
P.C. STA. 0+00.00
P.T. STA. 6+47.10

LOCATION	NORTHING	EASTING	STATION	OFFSET
P.C.	2,702.228216	2,217.522194	0+00.00	0'
P.I.	2,851.211362	2,506.288447	3+24.93	18.332382' LT.
P.T.	2,931.716878	2,821.091225	6+47.10	0'
P.C.	3,094.093332	3,456.036034	13+02.48	0'
P.I.	3,171.670857	3,759.389416	16+15.59	12.750048' RT.
P.R.C.	3,297.733762	4,046.007089	19+27.31	0'
P.I.	3,498.55809	4,502.597770	24+26.11	113.806702' LT.
P.R.C.	3,266.930257	4,944.360316	28+57.07	0'
P.I.	3,152.621193	5,162.373668	31+03.23	26.064652' RT.
P.T.	3,137.626135	5,408.079858	33+42.07	0'
W.P.#1	3,267.616621	3,975.891799	18+50.00	0.103637' RT.
W.P.#2	3,303.846620	4,060.457808	19+43.00	0.103641' RT.

HAMPTON, LENZINI & RENWICK, INC.
CIVIL & STRUCTURAL ENGINEERS
LAND SURVEYORS

3085 STEVENSON DRIVE, SUITE 201
SPRINGFIELD, ILLINOIS 62703
(217) 546-3400

ELGIN • SPRINGFIELD

PROJECT NUMBER: 12-05-0050-1 DATE: 08/29/07
DESIGNED: L.F.S. CHECKED: S.W.M. DRAWN: D.T.M.

**HORIZONTAL ALIGNMENT
AND BENCHMARKS**
SECTION 01-00268-00-BR
F.A.S. 2111 / FABYAN PARKWAY
KANE COUNTY

