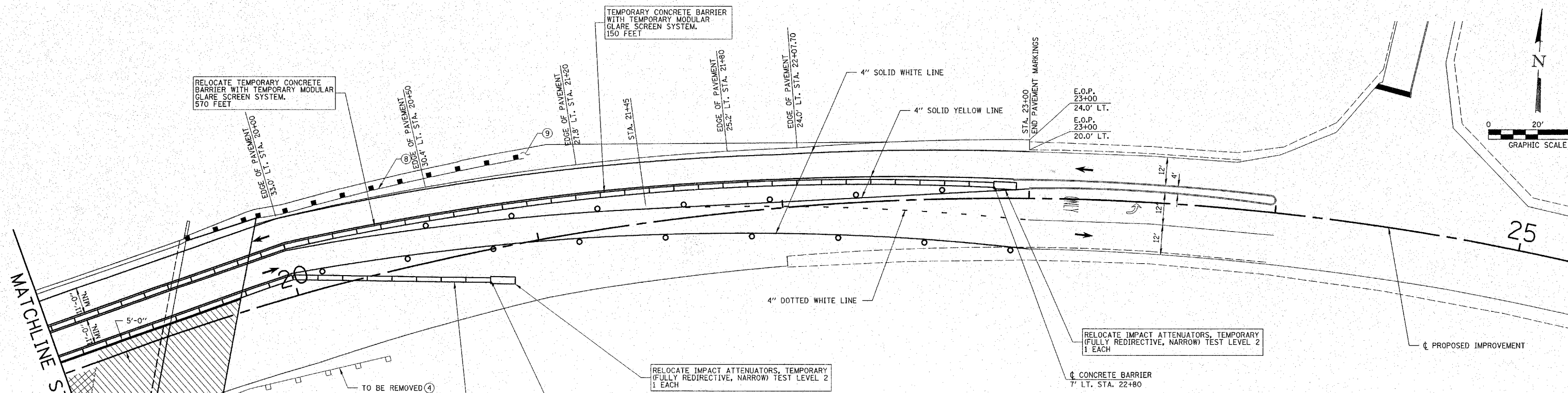
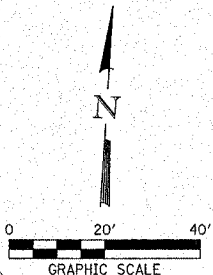


ROUTE NO.	SECTION	COUNTY	TOTAL SHEETS	SH
F.A.S. 2111	01-00268-00-BR	KANE	70	1
FED. ROAD DIST. NO.		ILLINOIS	CONTRACT NO. 8397	



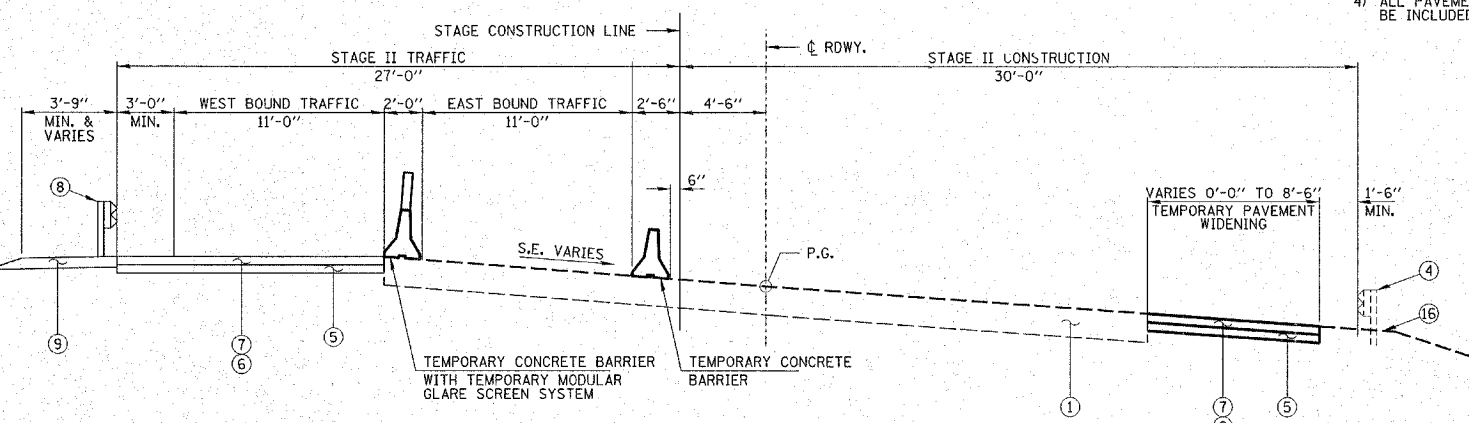
MATCHLINE STA. 19+00

LEGEND

- ① EXISTING HOT-MIX ASPHALT PAVEMENT
- ② EXISTING 8" HOT-MIX ASPHALT SHOULDER
- ③ EXISTING 8" AGGREGATE SHOULDER
- ④ EXISTING STEEL PLATE BEAM GUARDRAIL
- ⑤ SUB-BASE GRANULAR MATERIAL, TYPE A (4" THICKNESS)
- ⑥ HOT-MIX ASPHALT BINDER COURSE, IL-19.0, N70 (6 1/2" THICKNESS)
- ⑦ HOT-MIX ASPHALT SURFACE COURSE, MIX D, N70 (1 1/2" THICKNESS)
- ⑧ TEMPORARY TRAFFIC BARRIER TERMINAL, TYPE 1, SPECIAL (TANGENT)
- ⑨ TEMPORARY TRAFFIC BARRIER TERMINAL, TYPE 6
- ⑩ TEMPORARY TRAFFIC BARRIER TERMINAL, TYPE A
- ⑪ TEMPORARY TRAFFIC BARRIER TERMINAL, TYPE 6
- ⑫ GUARDRAIL AGGREGATE EROSION CONTROL (6" THICKNESS)
- ⑬ BRIDGE APPROACH PAVEMENT
- ⑭ HOT-MIX ASPHALT SHOULDERS (4" THICKNESS)
- ⑮ HOT-MIX ASPHALT SURFACE REMOVAL, BUTT-JOINT
- ⑯ STRIP REFLECTIVE CRACK CONTROL TREATMENT
- ⑰ TRAFFIC BARRIER TERMINAL, TYPE 1, SPECIAL (TANGENT)
- ⑱ STEEL PLATE BEAM GUARDRAIL, TYPE A
- ⑲ TRAFFIC BARRIER TERMINAL, TYPE 6
- ⑳ LEVELING BINDER (MACHINE METHOD), N70 (3/4" AND VARIES)
- ㉑ AGGREGATE SHOULDERS, TYPE B
- DRUM WITH STEADY BURNING MONODIRECTIONAL LIGHT AT 35' SPACING

NOTES:

- 1) TEMPORARY GUARDRAIL ON LEFT SHALL BE CONSTRUCTED BEFORE TRAFFIC IS SHIFTED TO STAGE II LANES.
- 2) OFFSETS SHOWN ARE FROM ϕ PROPOSED IMPROVEMENT.
- 3) PAVEMENT REMOVAL SHALL BE TO TOP OF EXISTING GRANULAR SUB GRADE OR AS DIRECTED BY ENGINEER.
- 4) ALL PAVEMENT MARKINGS USED DURING STAGE TRAFFIC SHALL BE INCLUDED IN SHORT TERM PAVEMENT MARKINGS.



TYPICAL CROSS SECTION (STAGE II)
STA. 19+74.44 TO STA. 23+00

HAMPTON, LENZINI & RENWICK, INC.
CIVIL & STRUCTURAL ENGINEERS
LAND SURVEYORS

3085 STEVENSON DRIVE, SUITE 201
SPRINGFIELD, ILLINOIS 62703
(217) 546-3400

ELGIN • SPRINGFIELD

PROJECT NUMBER: 12-05-0050-1 DATE: 08/29/07
DESIGNED: L.P.S. CHECKED: S.W.M. DRAWN: D.T.M.

**MAINTENANCE OF TRAFFIC
STAGE 2**
SECTION 01-00268-00-BR
F.A.S. 2111 / FABYAN PARKWAY
KANE COUNTY