

NORTH CURB LINE

Location	Station	Offset	Theoretical Grade Elevations
End of W. Approach Pvmf.	18+39.19	-34.00	719.314
A	18+49.19	-34.00	719.222
B	18+59.19	-34.00	719.130
Bk. W. Abutment	18+69.19	-34.00	719.037

NORTH EDGE OF PAVEMENT

Location	Station	Offset	Theoretical Grade Elevations
End of W. Approach Pvmf.	18+31.11	-20.00	718.936
A	18+41.11	-20.00	718.809
B	18+51.11	-20.00	718.682
Bk. W. Abutment	18+61.11	-20.00	718.554

STAGE CONSTRUCTION LINE

Location	Station	Offset	Theoretical Grade Elevations
End of W. Approach Pvmf.	18+22.16	-4.50	718.583
A	18+32.16	-4.50	718.417
B	18+42.16	-4.50	718.251
Bk. W. Abutment	18+52.16	-4.50	718.085

STRUCTURE

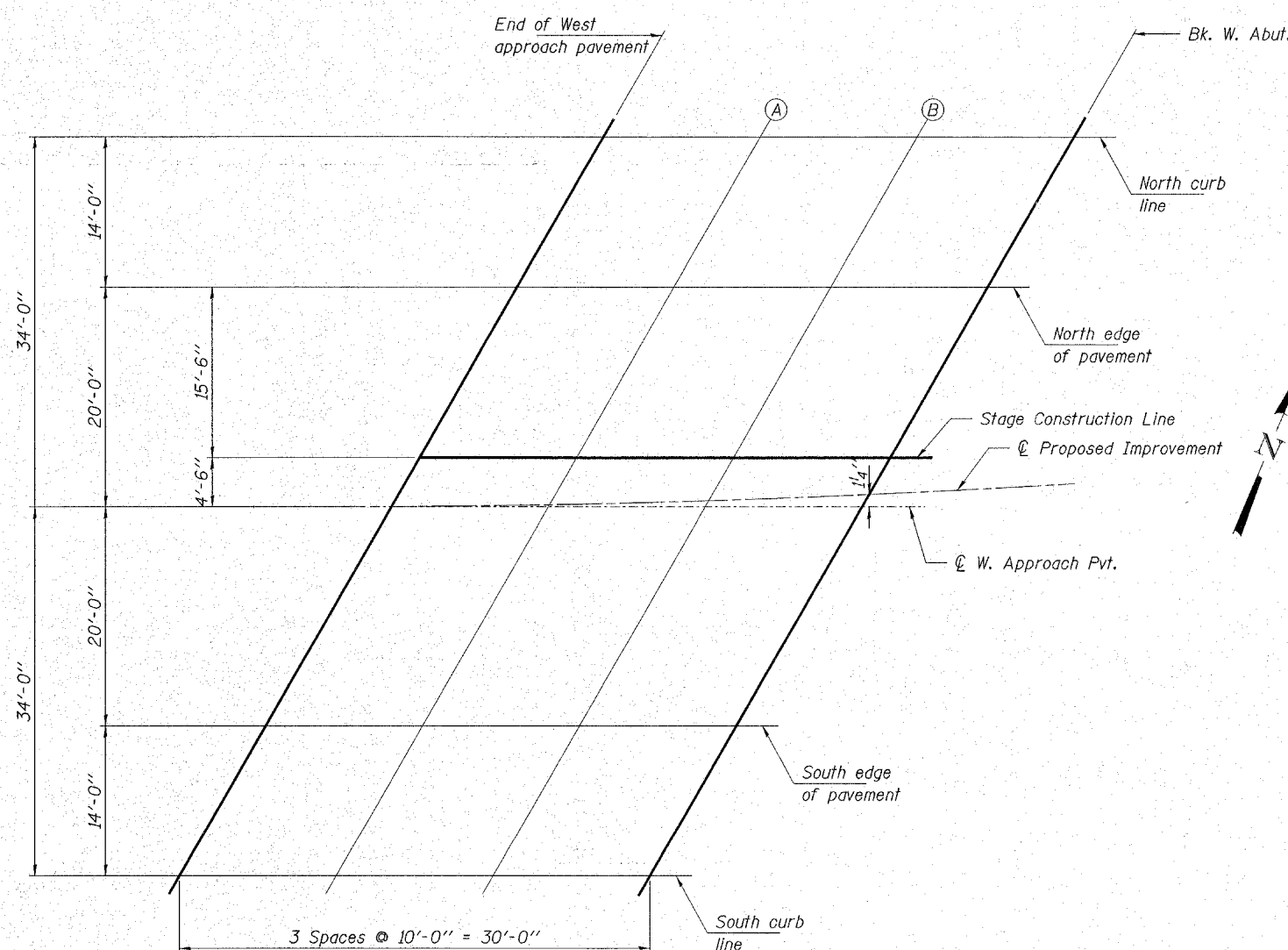
Location	Station	Offset	Theoretical Grade Elevations
End of W. Approach Pvmf.	18+19.56	0.00	718.493
A	18+29.56	0.00	718.316
B	18+39.56	0.00	718.139
Bk. W. Abutment	18+49.56	0.00	717.962

SOUTH EDGE OF PAVEMENT

Location	Station	Offset	Theoretical Grade Elevations
End of W. Approach Pvmf.	18+08.01	20.00	718.165
A	18+18.01	20.00	717.938
B	18+28.01	20.00	717.712
Bk. W. Abutment	18+38.01	20.00	717.485

SOUTH CURB LINE

Location	Station	Offset	Theoretical Grade Elevations
End of W. Approach Pvmf.	17+99.93	34.00	718.004
A	18+09.93	34.00	717.743
B	18+19.93	34.00	717.481
Bk. W. Abutment	18+29.93	34.00	717.219



WEST APPROACH SLAB - PLAN

HAMPTON, LENZINI & RENWICK, INC.
 CIVIL & STRUCTURAL ENGINEERS
 LAND SURVEYORS

3085 STEVENSON DRIVE, SUITE 201
 SPRINGFIELD, ILLINOIS 62703
 (217) 546-3400

ELGIN • SPRINGFIELD

PROJECT NUMBER: 12-05-0050-1 DATE: 08/29/07
 DESIGNED: R.J.P. CHECKED: S.W.M. DRAWN: D.A.B.

SLAB ELEVATIONS
SECTION 01-00268-00-BR
F.A.S. 2111 / FABYAN PARKWAY
KANE COUNTY
STATION 18+97 / STRUCTURE NO. 045-3019