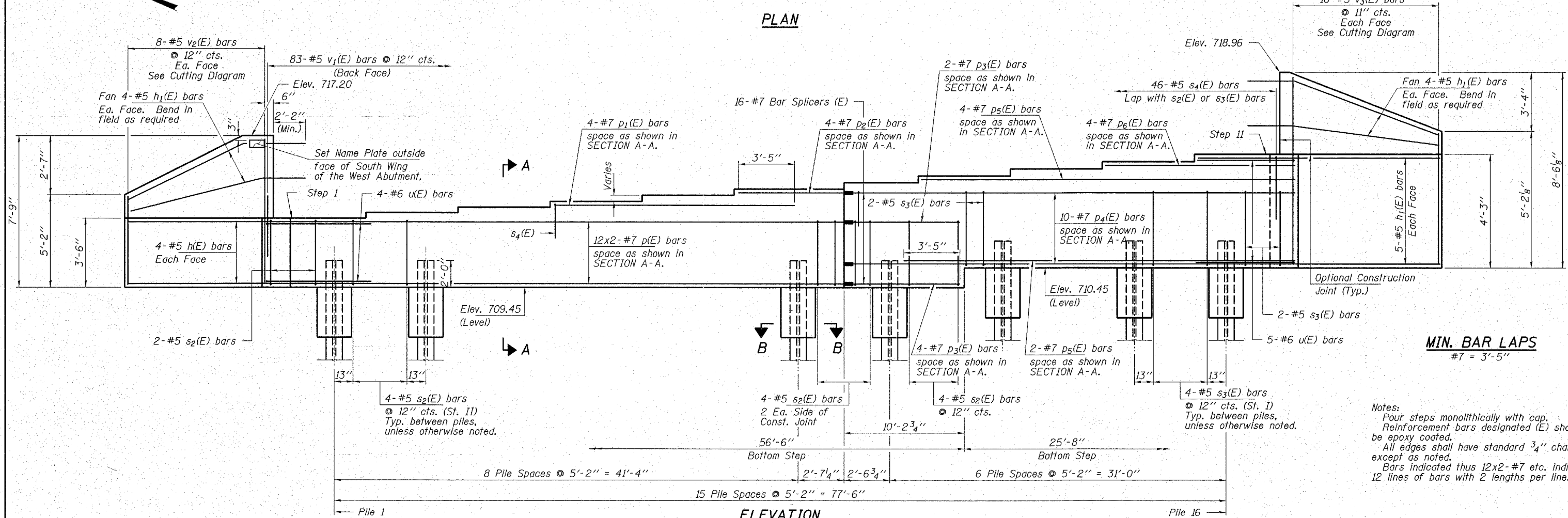


**PLAN**



**ELEVATION**  
(Looking West)

**CAP ELEVATIONS**

	STEP 1	STEP 2	STEP 3	STEP 4	STEP 5	STEP 6	STEP 7	STEP 8	STEP 9	STEP 10	STEP 11
Seat Elevation	712.95	713.07	713.21	713.35	713.51	713.68	713.86	714.06	714.27	714.48	714.71
Depth of Step	-	1 1/2"	1 5/8"	1 3/4"	1 1/8"	2"	2 1/8"	2 3/8"	2 1/2"	2 5/8"	2 3/4"

**PILE ELEVATIONS**

	PILE 1	PILE 2	PILE 3	PILE 4	PILE 5	PILE 6	PILE 7	PILE 8	PILE 9	PILE 10	PILE 11	PILE 12	PILE 13	PILE 14	PILE 15	PILE 16
Top of Pile	711.45	711.45	711.45	711.45	711.45	711.45	711.45	711.45	711.45	711.45	711.45	712.45	712.45	712.45	712.45	712.45

**HAMPTON, LENZINI & RENWICK, INC.**  
CIVIL & STRUCTURAL ENGINEERS  
LAND SURVEYORS

3085 STEVENSON DRIVE, SUITE 201  
SPRINGFIELD, ILLINOIS 62703  
(217) 546-3400

ELGIN • SPRINGFIELD

PROJECT NUMBER: 12-05-0050-1    DATE: 08/29/07  
DESIGNED: R.J.P.    CHECKED: S.W.M.    DRAWN: D.A.B.

**WEST ABUTMENT**  
SECTION 01-00268-00-BR  
F.A.S. 2111 / FABYAN PARKWAY  
KANE COUNTY  
STATION 18+97 / STRUCTURE NO. 045-3019