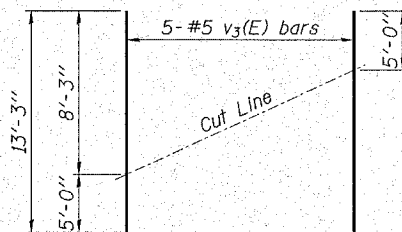


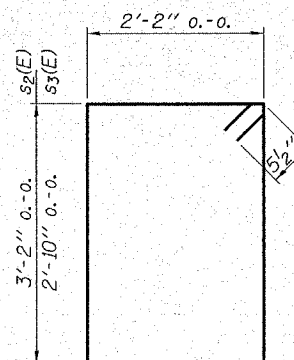
FIELD CUTTING DIAGRAM

Order $v_2(E)$ full length. Cut as shown and use remainder of bars in the same face.

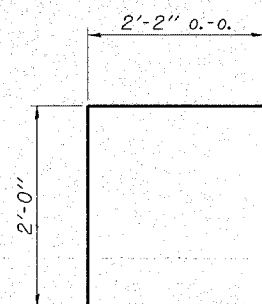


FIELD CUTTING DIAGRAM

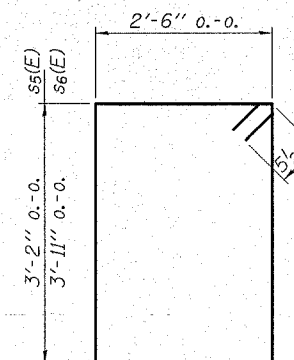
Order $v_3(E)$ full length. Cut as shown and use remainder of bars in the same face.



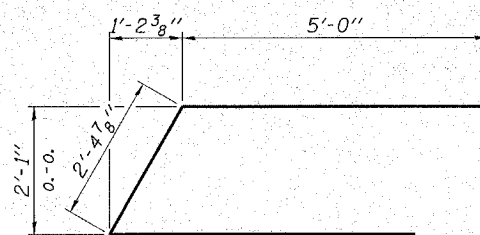
BARS $s_2(E)$ & $s_3(E)$



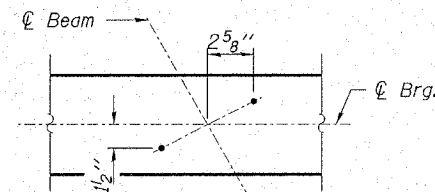
BAR $s_4(E)$



BARS $s_5(E)$ & $s_6(E)$

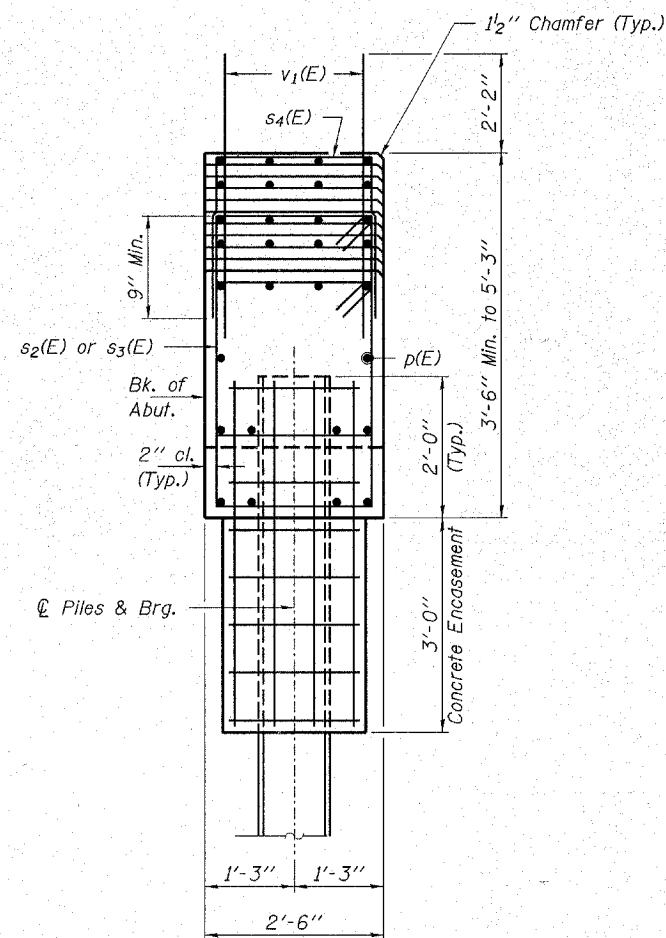


BAR $u(E)$

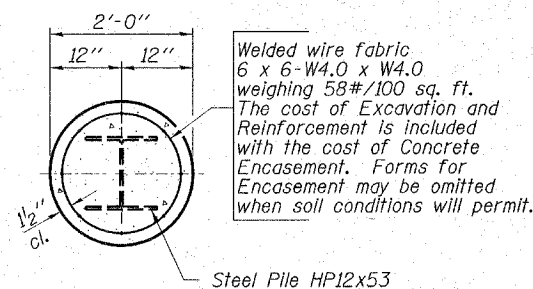


DETAIL A

Note: Space reinforcement in the cap to miss anchor bolts.



SECTION A-A



SECTION B-B

PILE DATA

Type	Steel HP12x53
No. Req'd. (W. Abut.)	*16
Nominal Req'd Bearing	354 Kips/Pile
Allowable Resistance Available	118 Kips/Pile
Est. Length	50 Ft/Pile

* Includes one test pile to be driven in a permanent location at the West Abutment.

The Steel H-piles shall be according to AASHTO M270 Grade 50.

The test piles shall be driven to 110 percent of the Nominal Required Bearing indicated in the pile data information.

BILL OF MATERIAL - W. ABUT.

BAR	NO.	SIZE	LENGTH	SHAPE
$h(E)$	8	#5	9'-0"	—
$h_1(E)$	26	#5	10'-9"	—
$p(E)$	24	#7	24'-9"	—
$p_1(E)$	4	#7	18'-5"	—
$p_2(E)$	4	#7	8'-9"	—
$p_3(E)$	6	#7	10'-0"	—
$p_4(E)$	10	#7	35'-7"	—
$p_5(E)$	6	#7	29'-8"	—
$p_6(E)$	4	#7	14'-7"	—
$s_2(E)$	42	#5	11'-7"	□
$s_3(E)$	24	#5	10'-11"	□
$s_4(E)$	46	#5	6'-6"	□
$s_5(E)$	1	#5	12'-3"	□
$s_6(E)$	1	#5	13'-9"	□
$u(E)$	9	#6	12'-5"	—
$v_1(E)$	149	#5	4'-4"	—
$v_2(E)$	8	#5	12'-6"	—
$v_3(E)$	10	#5	13'-3"	—
Concrete Structures		Cu. Yd.	34.3	
Reinforcement Bars, Epoxy Coated		Pound	5,340	
Bar Splacers		Each	16	
Steel Piles HP12x53		Foot	750	
Test Pile Steel HP12x53		Each	1	
Concrete Encasement		Cu. Yd.	5.6	

Reinforcement Bars designated (E) shall be epoxy coated. See Sheet 38 for pile details.

HAMPTON, LENZINI & RENWICK, INC.
 CIVIL & STRUCTURAL ENGINEERS
 LAND SURVEYORS

3085 STEVENSON DRIVE, SUITE 201
 SPRINGFIELD, ILLINOIS 62703
 (217) 546-3400

ELGIN • SPRINGFIELD

PROJECT NUMBER: 12-05-0050-1 DATE: 08/29/07
 DESIGNED: R.J.P. CHECKED: S.W.M. DRAWN: D.A.B.

WEST ABUTMENT DETAILS

SECTION 01-00268-00-BR

F.A.S. 2111 / FABYAN PARKWAY

KANE COUNTY

STATION 18+97 / STRUCTURE NO. 045-3019