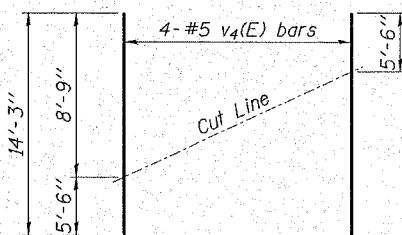


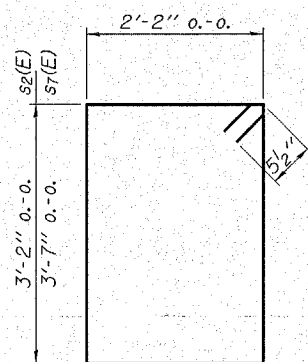
FIELD CUTTING DIAGRAM

Order $v_2(E)$ full length. Cut as shown and use remainder of bars in the same face.

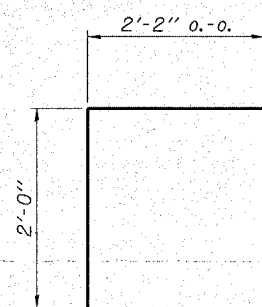


FIELD CUTTING DIAGRAM

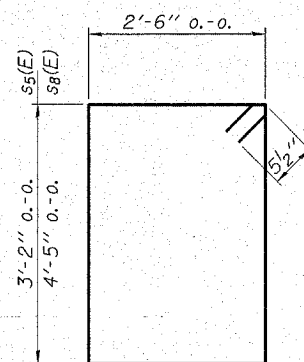
Order $v_4(E)$ full length. Cut as shown and use remainder of bars in the same face.



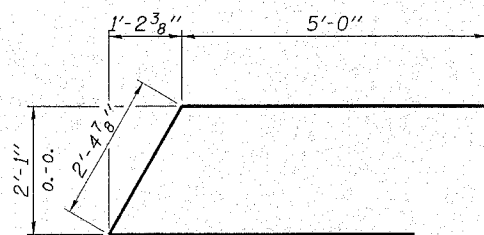
BARS $s_2(E)$ & $s_7(E)$



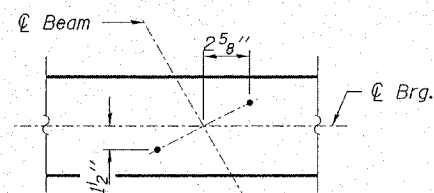
BAR $s_4(E)$



BARS $s_5(E)$ & $s_8(E)$

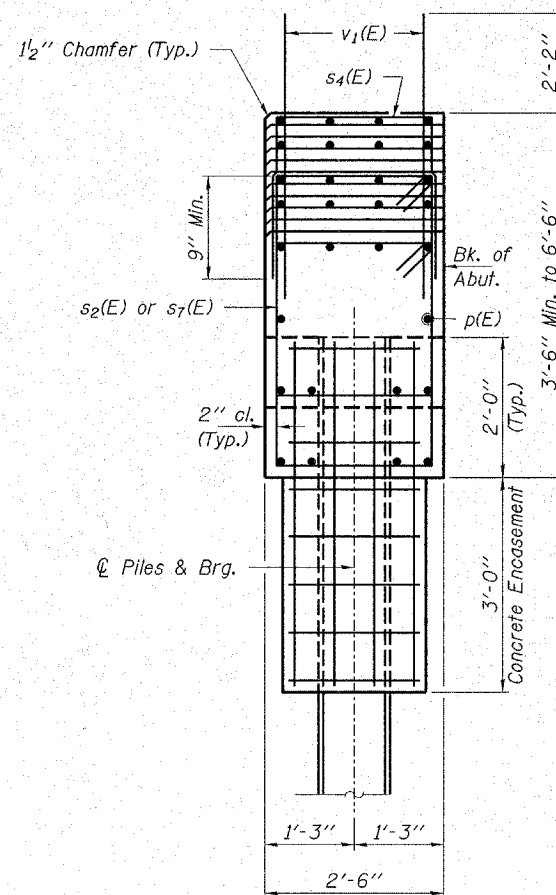


BAR $u(E)$

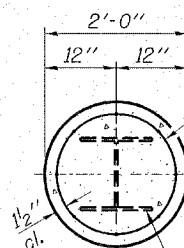


DETAIL A

Note: Space reinforcement in the cap to miss anchor bolts.



SECTION A-A



SECTION B-B

Welded wire fabric 6 x 6-W4.0 x W4.0 weighing 58#/100 sq. ft. The cost of Excavation and Reinforcement is included with the cost of Concrete Encasement. Forms for Encasement may be omitted when soil conditions will permit.

Steel Pile HP12x53

PILE DATA

Type.....Steel HP12x53
 No. Req'd. (E. Abut.).....*16
 Nominal Req'd Bearing.....354 Kips/Pile
 Allowable Resistance Available.....118 Kips/Pile
 Est. Length.....40 Ft/Pile

* Includes one test pile to be driven in a permanent location at the East Abutment.

The Steel H-piles shall be according to AASHTO M270 Grade 50.

The test piles shall be driven to 110 percent of the Nominal Required Bearing indicated in the pile data information.

BILL OF MATERIAL - E. ABUT.

BAR	NO.	SIZE	LENGTH	SHAPE
$h(E)$	8	#5	9'-0"	—
$h_1(E)$	26	#5	10'-9"	—
$p(E)$	20	#7	24'-9"	—
$p_1(E)$	4	#7	18'-5"	—
$p_2(E)$	4	#7	8'-9"	—
$p_4(E)$	8	#7	35'-7"	—
$p_7(E)$	2	#7	25'-0"	—
$p_8(E)$	8	#7	21'-7"	—
$p_9(E)$	6	#7	7'-0"	—
$p_{10}(E)$	4	#7	14'-0"	—
$p_{11}(E)$	4	#7	22'-0"	—
$s_2(E)$	31	#5	11'-7"	□
$s_4(E)$	25	#5	6'-6"	□
$s_5(E)$	1	#5	12'-3"	□
$s_7(E)$	33	#5	12'-5"	□
$s_8(E)$	1	#5	14'-9"	□
$u(E)$	9	#6	12'-5"	—
$v_1(E)$	149	#5	4'-4"	—
$v_2(E)$	8	#5	12'-6"	—
$v_4(E)$	10	#5	14'-3"	—
Concrete Structures		Cu. Yd.	40.7	
Reinforcement Bars, Epoxy Coated		Pound	4,800	
Bar Splicers		Each	14	
Steel Piles HP12x53		Foot	600	
Test Pile Steel HP12x53		Each	1	
Concrete Encasement		Cu. Yd.	5.6	

Reinforcement Bars designated (E) shall be epoxy coated. See Sheet 38 for pile details.

HAMPTON, LENZINI & RENWICK, INC.
 CIVIL & STRUCTURAL ENGINEERS
 LAND SURVEYORS

3085 STEVENSON DRIVE, SUITE 201
 SPRINGFIELD, ILLINOIS 62703
 (217) 546-3400

ELGIN • SPRINGFIELD

PROJECT NUMBER: 12-05-0050-1 DATE: 08/29/07
 DESIGNED: R.J.P. CHECKED: S.W.M. DRAWN: D.A.B.

EAST ABUTMENT DETAILS
SECTION 01-00268-00-BR
F.A.S. 2111 / FABYAN PARKWAY
KANE COUNTY
STATION 18+97 / STRUCTURE NO. 045-3019