

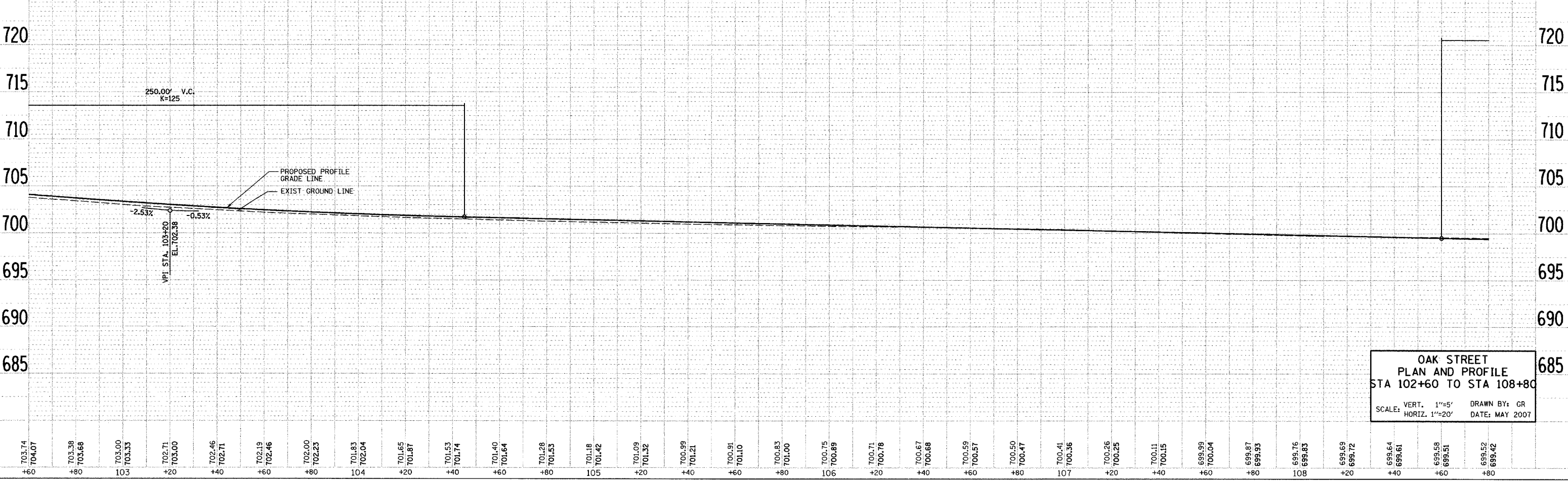
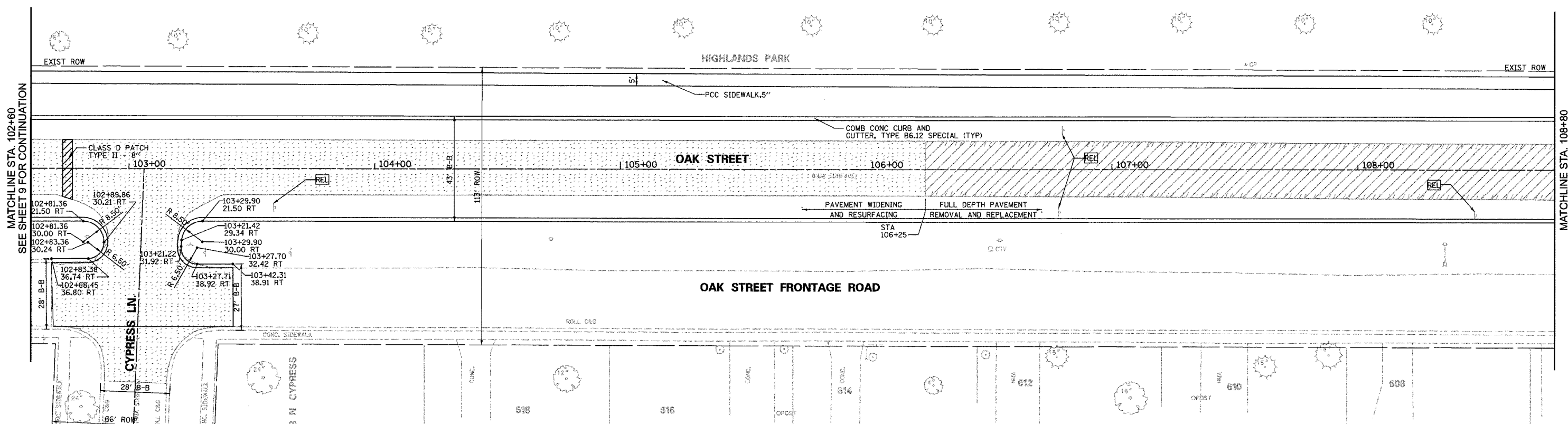
F.A. RTE.	SECTION	COUNTY	TOTAL SHEETS	SHEET NO.
D4-00046-00-WR		KANE	60	9
STA. 102+60		TO STA. 108+80		
FED. ROAD DIST. NO. 1		ILLINOIS	FED. AID PROJECT	

NOTES:

SEE SHEET 31 FOR INTERSECTION DETAILS
 DEPRESS CURB AT ALL CROSSWALK LOCATIONS.
 SEE EROSION CONTROL SHEETS FOR TREE PROTECTION LOCATIONS.

LEGEND

- 2 1/2" HMA SURFACE REMOVAL
- PAVEMENT REMOVAL (INCLUDED IN COST OF EXCAVATION)
- DEPRESSED CURB LOCATIONS
- DECIDUOUS TREE TO BE REMOVED (UNIT DIAMETER)



**OAK STREET
 PLAN AND PROFILE
 STA 102+60 TO STA 108+80**

SCALE: VERT. 1"=5' DRAWN BY: CR
 HORIZ. 1"=20' DATE: MAY 2007

DATE: _____ BY: _____
 CHECKED: _____
 DATE: _____ BY: _____
 CHECKED: _____
 DATE: _____ BY: _____
 CHECKED: _____

DATE: _____ BY: _____
 CHECKED: _____
 DATE: _____ BY: _____
 CHECKED: _____
 DATE: _____ BY: _____
 CHECKED: _____

PLOT DATE = 5/30/2007
 FILE NAME = m:\gpr\cna\197\sheet\102+60.dgn
 USER NAME = JUSER



MATCHLINE STA. 102+60
 SEE SHEET 9 FOR CONTINUATION

MATCHLINE STA. 108+80
 SEE SHEET 10 FOR CONTINUATION