

F.A.I.D. R.T.E.	SECTION	COUNTY	TOTAL SHEETS	SHEET NO.
5355	04-00167-00-WR	DEKALB	62	11
STA. 21+50		TO STA. 35+50		
FED. ROAD DIST. NO.		ILLINOIS FED. AID PROJECT		

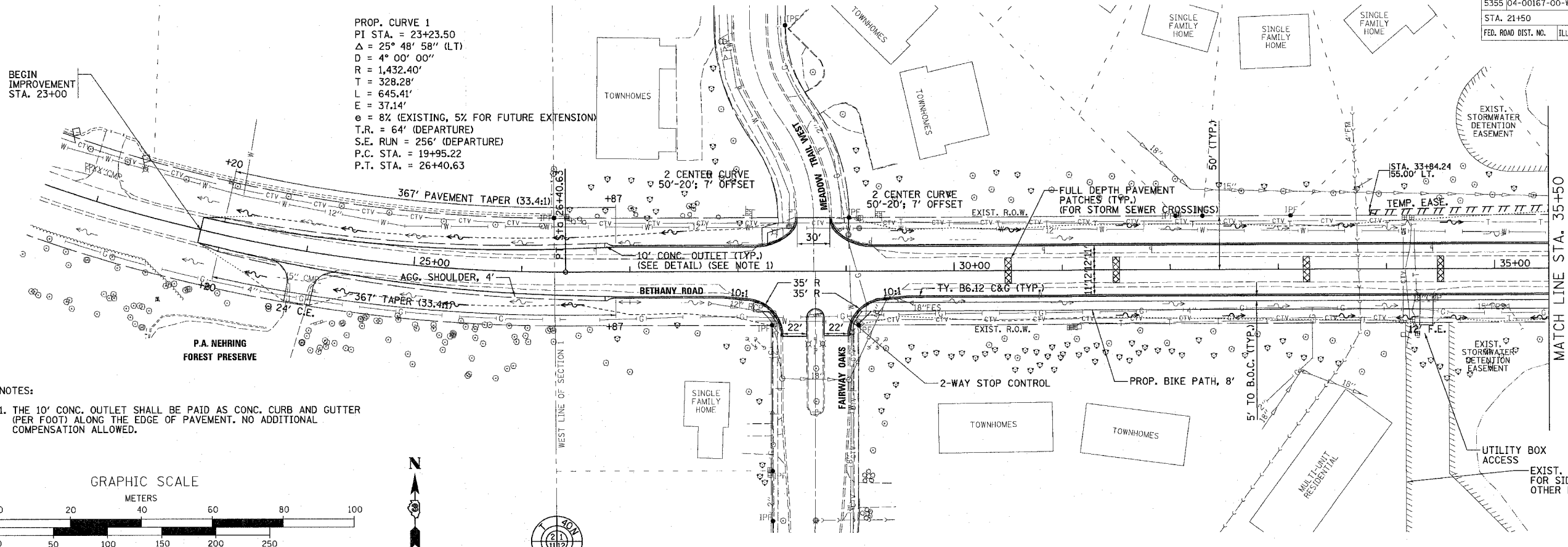
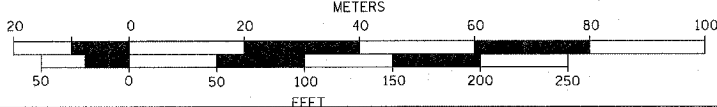
PROP. CURVE 1
 PI STA. = 23+23.50
 $\Delta = 25^\circ 48' 58''$ (LT)
 $D = 4^\circ 00' 00''$
 $R = 1,432.40'$
 $T = 328.28'$
 $L = 645.41'$
 $E = 37.14'$
 $e = 8\%$ (EXISTING, 5% FOR FUTURE EXTENSION)
 $T.R. = 64'$ (DEPARTURE)
 $S.E. RUN = 256'$ (DEPARTURE)
 $P.C. STA. = 19+95.22$
 $P.T. STA. = 26+40.63$

BEGIN IMPROVEMENT STA. 23+00

NOTES:

1. THE 10' CONC. OUTLET SHALL BE PAID AS CONC. CURB AND GUTTER (PER FOOT) ALONG THE EDGE OF PAVEMENT. NO ADDITIONAL COMPENSATION ALLOWED.

GRAPHIC SCALE



PLAN	SURVEYED	BY	DATE
	PLOTTED		
	CHECKED		
	NO. OF W.A. CHECKED		
	NO.		
	DATE FILE NAME		

PROFILE	SURVEYED	BY	DATE
	PLOTTED		
	CHECKED		
	NO. OF W.A. CHECKED		
	NO.		
	STRUCTURE NOTATIONS DRWG		
	NO.		

PLOT DATE = 8/16/2007
 FILE NAME = H:\dekalb\187283-BethanyRd\Draw\Ugr\Asst\PPR01.dgn
 PLOT SCALE = 1"=50'
 USER NAME = USER

