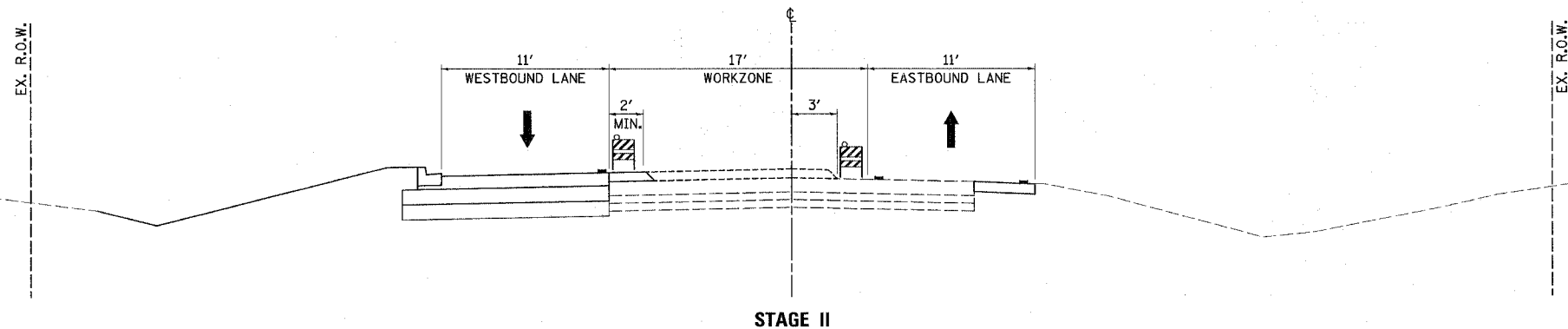


F.A.U. RTE.	SECTION	COUNTY	TOTAL SHEETS	SHEET NO.
5355	04-00167-00-WR	DEKALB	62	18
STA.		TO STA.		
FED. ROAD DIST. NO.	ILLINOIS	FED. AID PROJECT		

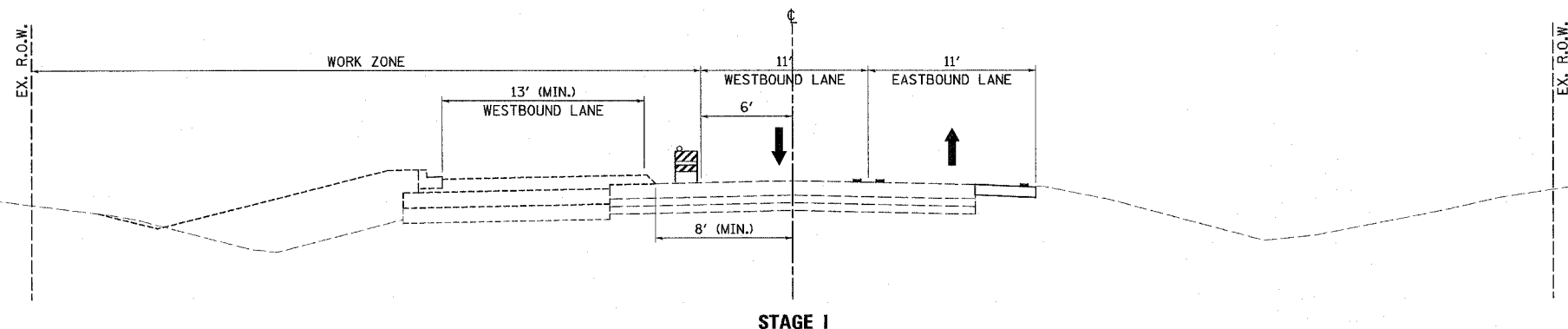


CONSTRUCTION ACTIVITY

- CONSTRUCT PAVEMENT OVERLAY IN THE MIDDLE OF THE EXISTING PAVEMENT.
- COMPLETE MOST REMAINING LANDSCAPING WORK ON NORTH SIDE.

MAINTENANCE OF TRAFFIC

- WESTBOUND TRAFFIC UTILIZES NEW PAVEMENT.
- EASTBOUND TRAFFIC CONTINUES TO UTILIZE TEMPORARY AND EXISTING PAVEMENT.

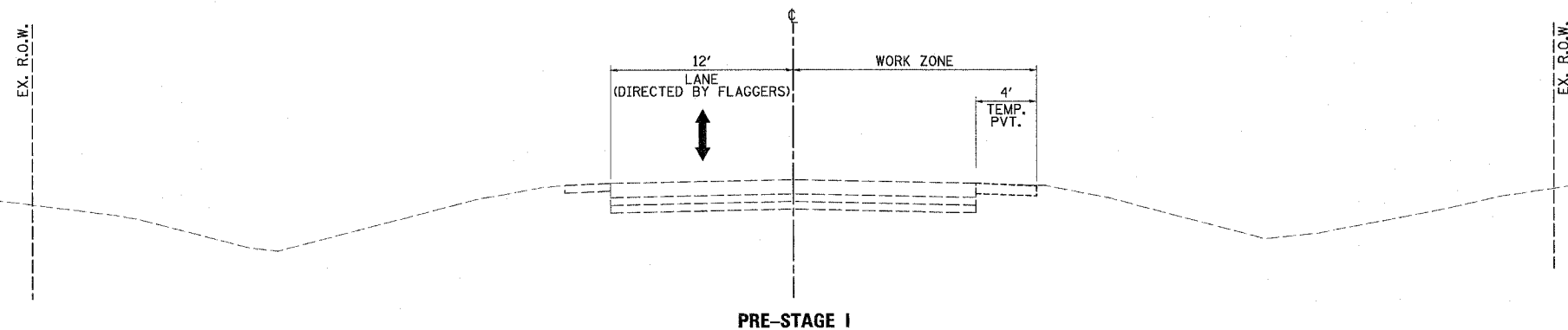


CONSTRUCTION ACTIVITY

- CONSTRUCT PAVEMENT WIDENING ON NORTH SIDE.
- CONSTRUCT A PORTION OF THE PAVEMENT OVERLAY ON THE NORTH SIDE.
- CONSTRUCT SIDEWALKS.

MAINTENANCE OF TRAFFIC

- TRAFFIC IS SHIFTED TO UTILIZE THE TEMPORARY PAVEMENT, EASTBOUND LANE, AND A PORTION OF THE WESTBOUND LANE.



CONSTRUCTION ACTIVITY

- CONSTRUCT TEMPORARY PAVEMENT.
- PLACE EROSION CONTROL ITEMS.

MAINTENANCE OF TRAFFIC

- TRAFFIC UTILIZES WESTBOUND LANES WITH ASSISTANCE OF FLAGGERS. (PER STD. 701306-01)

PLOT DATE = 8/15/07
 FILE NAME = R:\Users\kba\My Documents\Projects\87331\87331.dgn
 PLOT SCALE = N.T.S.
 USER NAME = USER

RHA&A
 Robert H. Anderson & Associates, Inc.
 Consulting Engineers
 Timbers Professional Center
 220 West River Drive, St. Charles, IL 60174
 Phone - 630.584.3530 Fax - 630.584.3047

REVISIONS	
NAME	DATE

ILLINOIS DEPARTMENT OF TRANSPORTATION
 BETHANY ROAD WIDENING
 FAIRWAY OAKS DRIVE TO RESOURCE PARKWAY
 CITY OF DEKALB
 SUGGESTED MAINTENANCE OF TRAFFIC PLAN
 TYPICAL SECTIONS
 STAGES I - III
 SCALE: N.T.S.
 DATE 8/17/07
 DRAWN BY KMA
 CHECKED BY BP