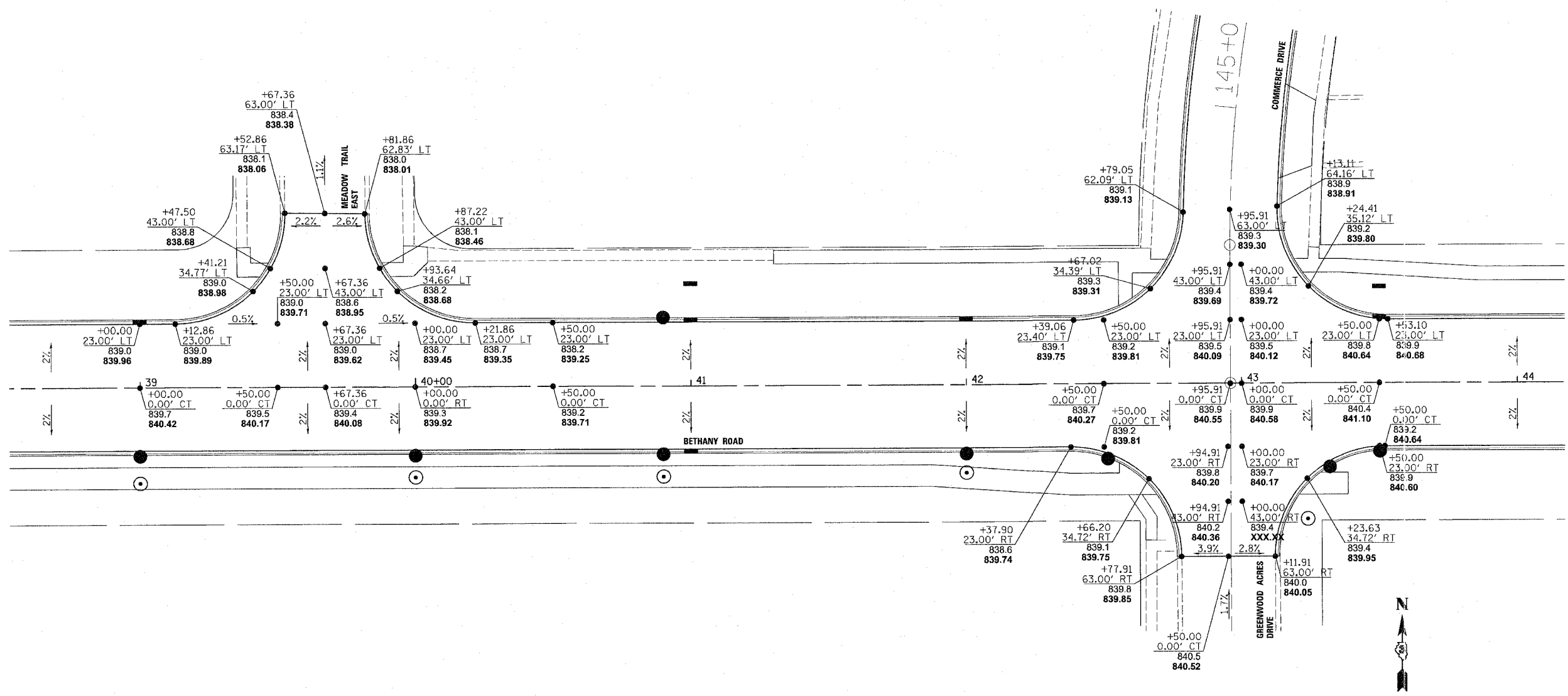
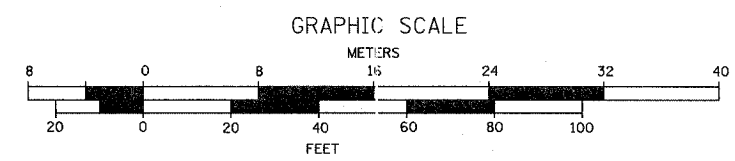


F.A.U. RTE.	SECTION	COUNTY	TOTAL SHEETS	SHEET NO.
5355	04-00167-00-WR	DEKALB	62	26
STA.		TO STA.		
FED. ROAD DIST. NO.	ILLINOIS	FED. AID PROJECT		



LEGEND

- PARTIAL STATION OFFSET
- EX. SPOT ELEV.
- PROP. SPOT ELEV.



PLOT DATE = 8/16/2007
 FILE NAME = H:\Dekalb\167263-BethanyRd\G:\1\Drawn\Sheet\INT02.dgn
 PLOT SCALE = 1"=20'
 USER NAME = JUSER

RHA&A
 Robert H. Anderson & Associates, Inc.
 Consulting Engineers
 Timbers Professional Center
 220 West River Drive, St. Charles, IL 60174
 Phone - 630.584.3530 Fax - 630.584.3047

REVISIONS	
NAME	DATE

ILLINOIS DEPARTMENT OF TRANSPORTATION
 BETHANY ROAD WIDENING
 FAIRWAY OAKS DRIVE TO RESOURCE PARKWAY
 CITY OF DEKALB

INTERSECTION DETAIL
 MEADOW TRAIL EAST
 & COMMERCE DR. / GREENWOOD ACRES DR.

SCALE: 1"=20'
 DATE 8/17/07
 DRAWN BY KMA
 CHECKED BY BP