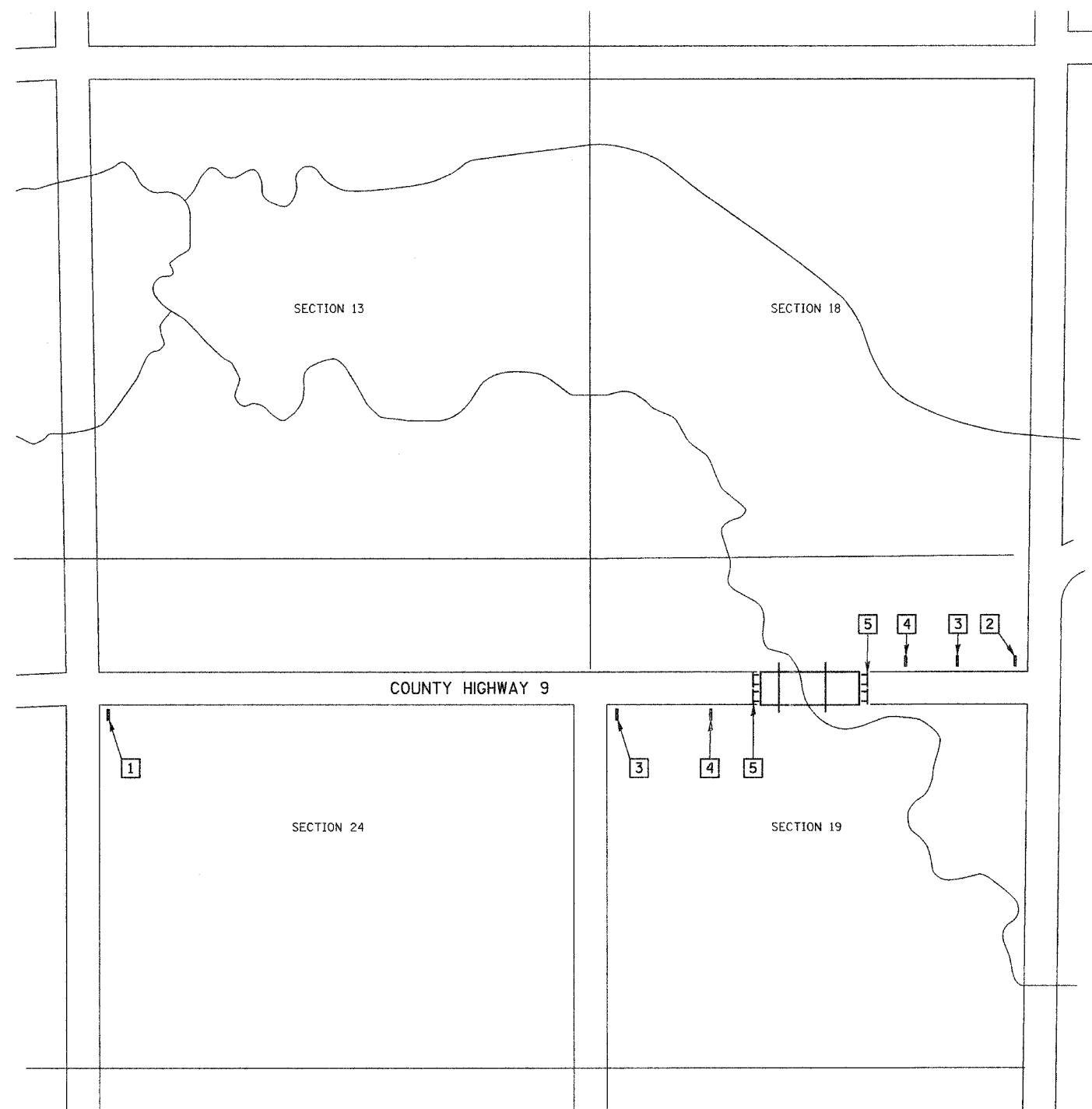


ROUTE NO.	SECTION	COUNTY	TOTAL SHEETS	SHEET NO.
CH 9	*	IROQUOIS	17	4
FED. ROAD DIST. NO. 7		ILLINOIS	PROJECT BRS-334(112)	
*04-00052-03-BR			CONTRACT #87357	

T 25 N, R 11 W, 2nd PM

T 25 N, R 10 W, 2nd PM



- 1

ROAD CLOSED
1/2 MILES AHEAD
LOCAL TRAFFIC ONLY

ROAD CLOSED
1/2 MILES AHEAD
LOCAL TRAFFIC ONLY

R11-3
- 2

ROAD CLOSED
1/2 MILE AHEAD
LOCAL TRAFFIC ONLY

ROAD CLOSED
1/2 MILE AHEAD
LOCAL TRAFFIC ONLY

R11-3
- 3

ROAD
CLOSED
AHEAD

ROAD CLOSED
AHEAD

W20-3
- 4

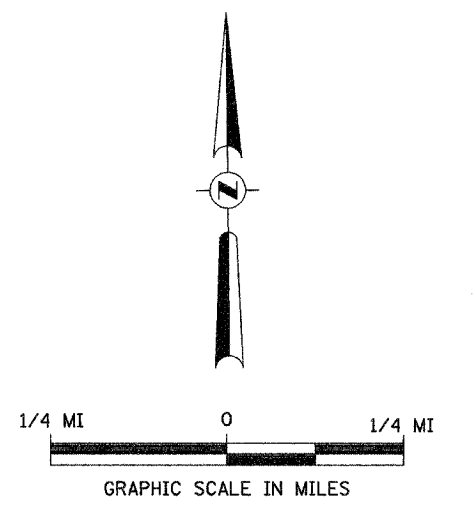
ROAD
CLOSED
500 FT

ROAD CLOSED
500 FT

W20-3
- 5

TYPE III BARRICADES

SEE STANDARD BLR 21
AND SPECIAL PROVISIONS



TRAFFIC CONTROL PLAN
C.H. 9 OVER MUD CREEK
SECTION 04-00052-03-BR
IROQUOIS COUNTY
STATION 39+90.04