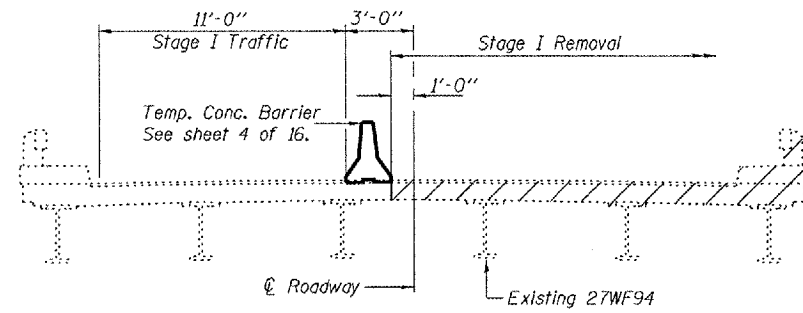


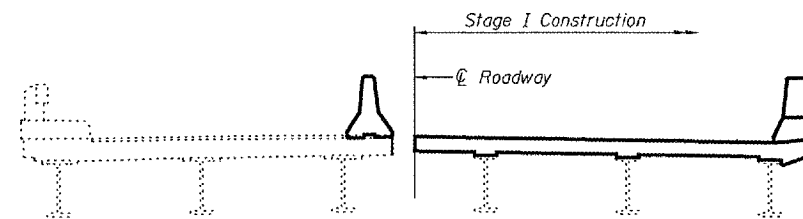
STATE OF ILLINOIS  
DEPARTMENT OF TRANSPORTATION

ROUTE NO. F.A.P. 310	SECTION 28BR-1	COUNTY WARREN	SHEETS 97	POST 51	SHEET NO. 3
FED. ROAD DIST. NO. 7					ILLINOIS
FED. AID PROJECT					16 SHEETS

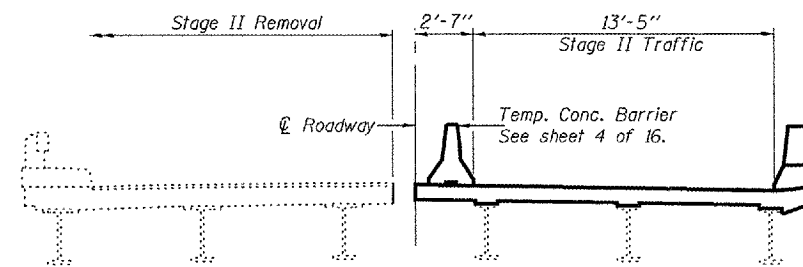
Contract #88798



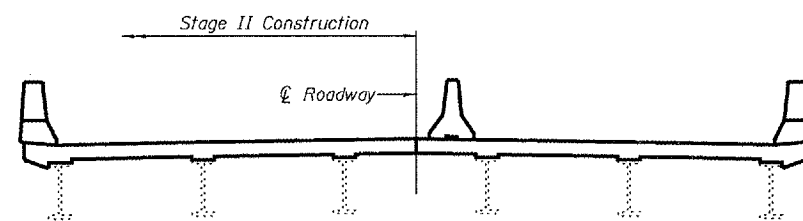
**STAGE I REMOVAL**



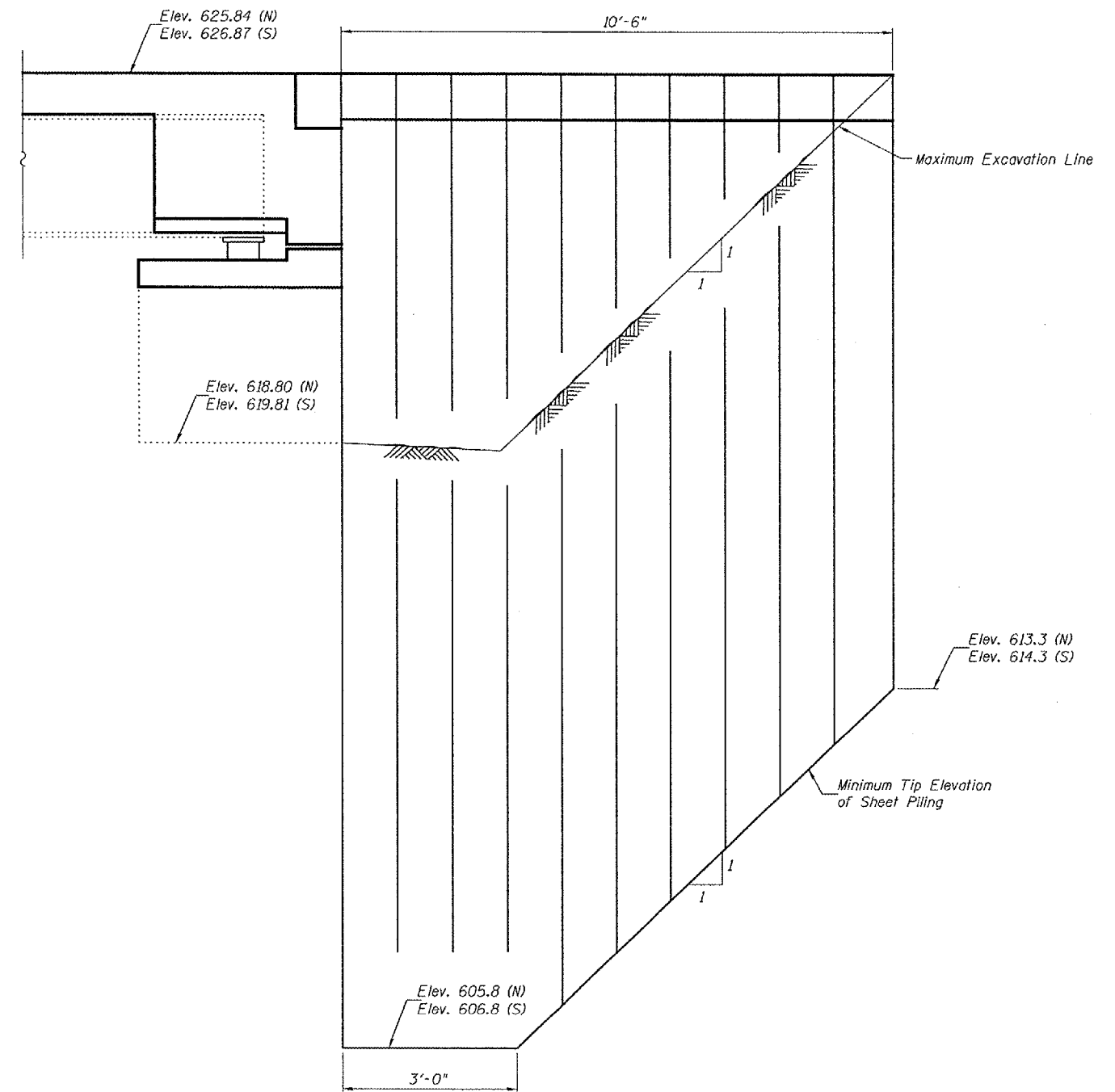
**STAGE I CONSTRUCTION**



**STAGE II REMOVAL**



**STAGE II CONSTRUCTION**



**TEMPORARY SHEET PILING**

(Stage I and Stage II)  
Minimum Section Modulus = 7.7 in<sup>3</sup>/ft  
Minimum Embedment = 12'-6"

If the Contractor chooses to alter the temporary cantilevered sheet piling design requirements shown on the plans, a design submittal including plan details and calculations will be required for review and acceptance by the Engineer.

Due to the lack of boring data, the temporary sheet piling design has been developed to account for most soil conditions. The sheet piling should be monitored for excessive deflection and the Engineer contacted if soft or loose soils are encountered.

**STAGE CONSTRUCTION DETAILS**  
**F.A.P. ROUTE 310 - SECTION 28BR-1**  
**WARREN COUNTY**  
**STATION 829+24.00**  
**STRUCTURE NO. 094-0002**

DESIGNED	Tom L. Kurtenbach
CHECKED	Alan M. Johnson
DRAWN	BMC Amber M. Seiber
CHECKED	TLK/AMJ

EXAMINED	Thomas J. Demagalki	September 4, 2007
PASSED	Ralph E. Anderson	

Notes:  
All staging cross sections are looking South.  
Hatched area indicates Removal of Existing Concrete Deck.  
For quantity of Temporary Concrete Barrier see Roadway Plans.