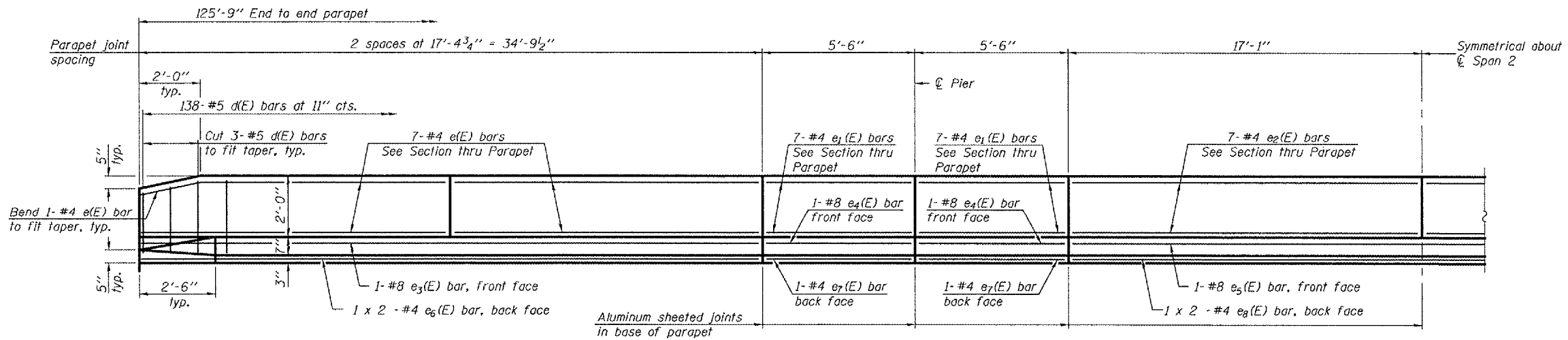


STATE OF ILLINOIS
DEPARTMENT OF TRANSPORTATION

ROUTE NO.	SECTION	COUNTY	SHEET	SHEET NO.
F.A.P. 310	28BR-1	WARREN	97 56	8
FED. ROAD DIST. NO. 7		ILLINOIS	FED. AID PROJECT-	

Contract #88798



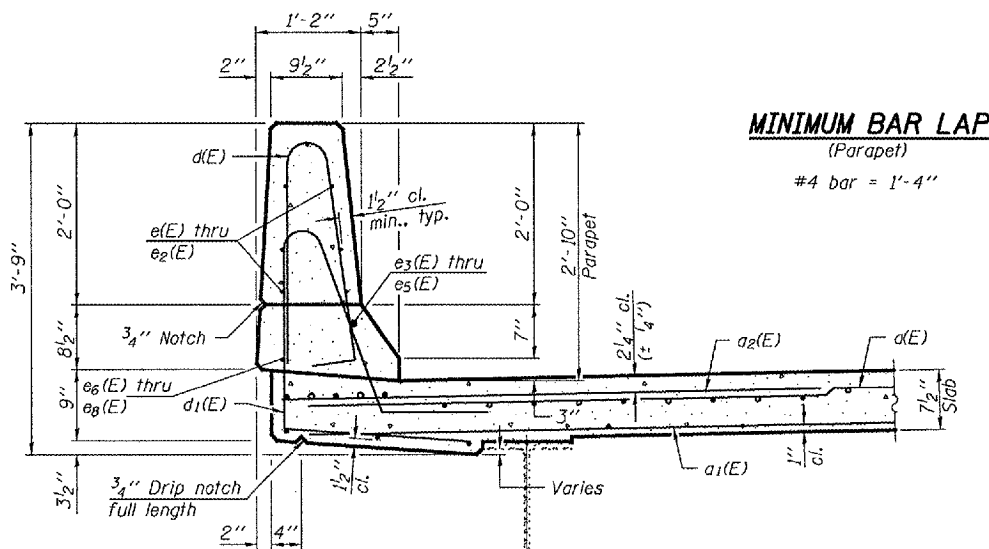
INSIDE ELEVATION OF PARAPET

SUPERSTRUCTURE
BILL OF MATERIAL

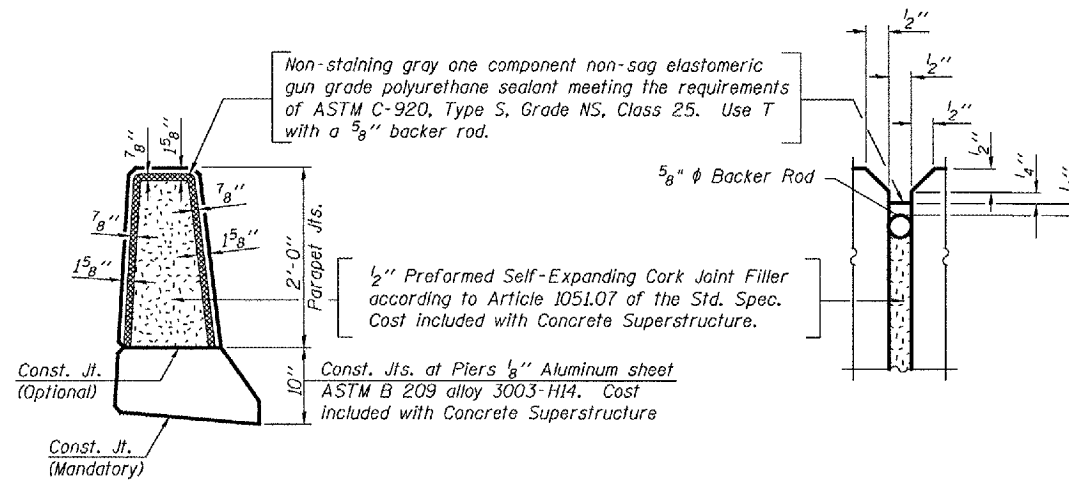
Bar	No.	Size	Length	Shape
d(E)	426	#5	17'-0"	—
d1(E)	300	#5	16'-7"	—
d2(E)	212	#6	6'-0"	—
b(E)	152	#5	32'-3"	—
b1(E)	68	#6	26'-3"	—
b2(E)	180	#5	26'-2"	—
d(E)	276	#5	5'-7"	⌒
d1(E)	276	#5	6'-7"	⌒
e(E)	56	#4	17'-1"	—
e1(E)	56	#4	5'-3"	—
e2(E)	28	#4	16'-10"	—
e3(E)	4	#8	34'-6"	—
e4(E)	8	#8	5'-3"	—
e5(E)	2	#8	33'-11"	—
e6(E)	8	#4	18'-0"	—
e7(E)	8	#4	5'-3"	—
e8(E)	4	#4	17'-10"	—
m(E)	32	#6	17'-1"	—
m1(E)	24	#6	7'-6"	—
m2(E)	4	#6	2'-11"	—
m3(E)	8	#6	6'-1"	—
m4(E)	4	#6	1'-4"	—
s(E)	76	#5	6'-8"	⊓
s1(E)	68	#4	7'-9"	⊓
u(E)	72	#4	2'-9"	⊓
v(E)	64	#5	3'-8"	⊓
Reinforcement Bars, Epoxy Coated			Pound	35,290
Concrete Superstructure			Cu. Yds.	150

Bars indicated thus 1 x 2 -#4 etc. indicates 1 line of bars with 2 lengths per line.

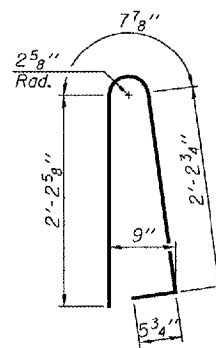
SUPERSTRUCTURE DETAILS
F.A.P. ROUTE 310 - SECTION 28BR-1
WARREN COUNTY
STATION 829+24.00
STRUCTURE NO. 094-0002



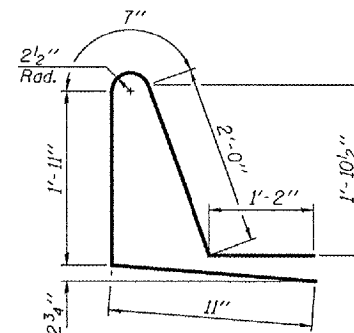
SECTION THRU PARAPET



PARAPET JOINT DETAILS



BAR d(E)



BAR d1(E)

DESIGNED	Tom L. Kurtenbach
CHECKED	Alan M. Johnson
DRAWN	BMC Amber M. Saiber
CHECKED	TLK/AMJ

September 4, 2007
EXAMINED *Thomas J. Domagala*
PASSED *Ralph E. Anderson*
ENGINEER OF BRIDGES AND STRUCTURES