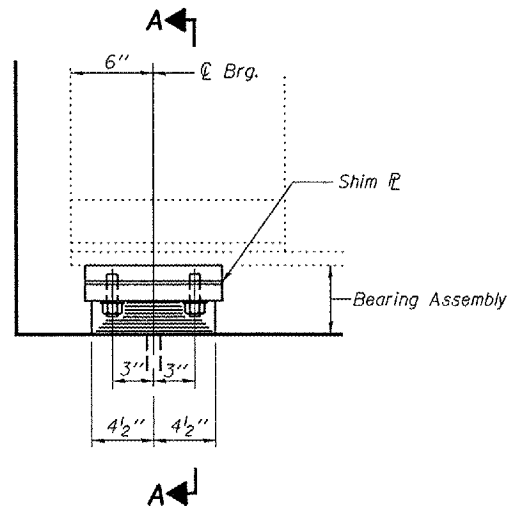


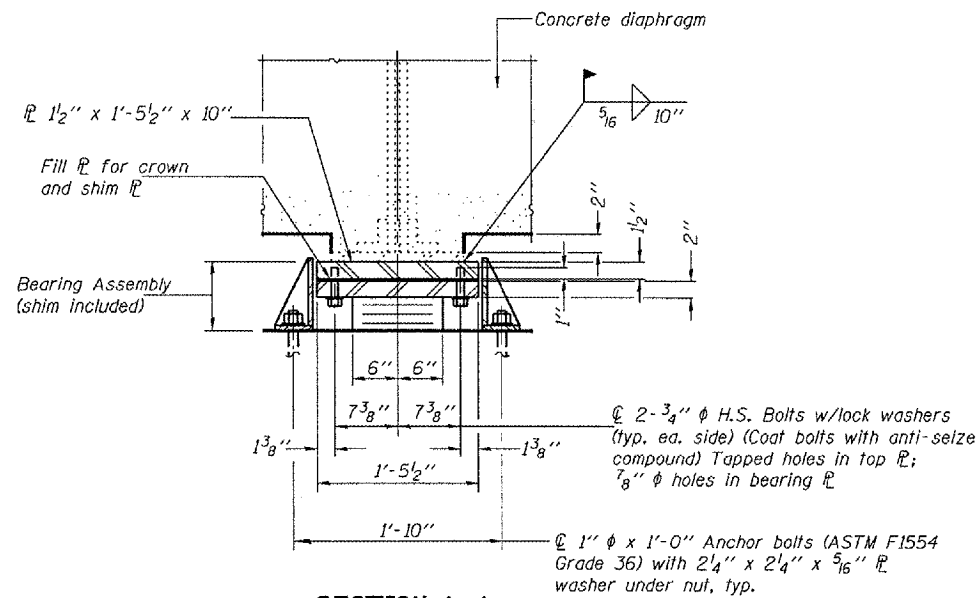
STATE OF ILLINOIS
DEPARTMENT OF TRANSPORTATION

ROUTE NO.	SECTION	QUANTITY	DATE	BY	SHEET NO. 11 16 SHEETS
F.A.P. 310	28BR-1	WARREN	97	57	
FED. ROAD DIST. NO. 7	ILLINOIS	FED. AID PROJECT-			

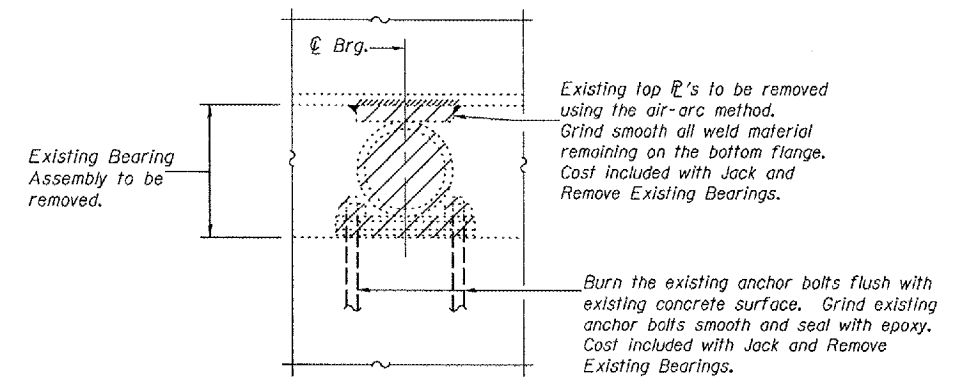
Contract #88798



ELEVATION AT N. ABUT.



SECTION A-A



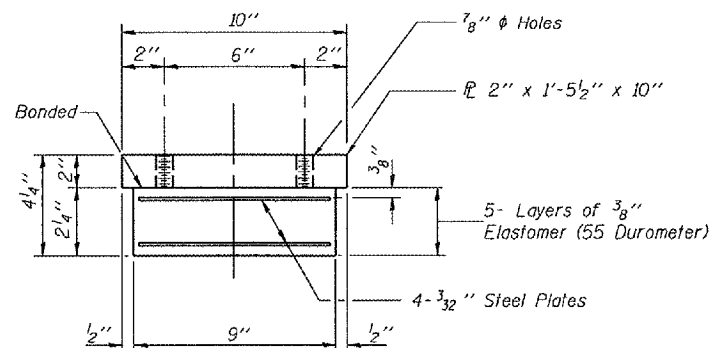
JACK AND REMOVE EXISTING BEARING PROCEDURE

1. The contractor shall submit for approval by the engineer, plans for jacking existing beams and installing new bearings prior to commencing any related work. The maximum dead load reaction per beam (weight of steel only) is 1.7k at the abutments. Minimum jack capacity is 3.4k at abutments.
2. Prior to ordering any material, the contractor shall verify shim plate thickness required at each bearing.
3. Jack and Remove Existing bearings shall be done after the existing deck is removed and prior to placing the new deck.
4. Jacking shall be limited to a maximum of 1/4" lift to remove existing bearing.
5. The new bearings and shim plates shall be in place and the jacks shall be lowered before the new concrete deck is poured.

Note: Hatched area indicates Removal of Existing Bearing.

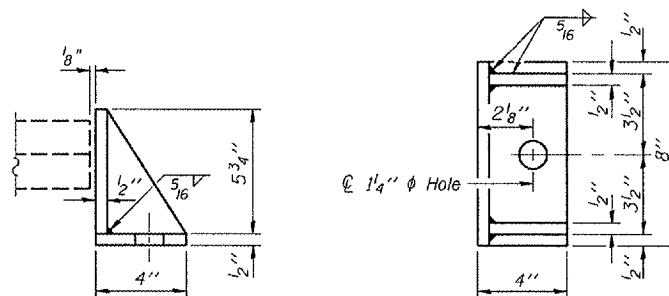
TYPE I ELASTOMERIC EXP. BRG.

Notes:
Anchor bolts shall be ASTM F1554 all-thread (or an Engineer-approved alternate material) of the grade(s) and diameter(s) specified. ASTM A307 Grade C anchor bolts may be used in lieu of ASTM F1554 Grade 36 (Fy=36ksi). The corresponding specified grade of AASHTO M314 anchor bolts may be used in lieu of ASTM F1554.
Drilled and set anchor bolts shall be installed according to Article 521.06 of the Standard Specifications.
Side retainers and other steel members required for the bearing assembly shall be included in the cost of Elastomeric Bearing Assembly, Type I.
Two 1/8 in. adjusting shims shall be provided for each bearing in addition to all other plates or shims and placed as shown on bearing details.



BEARING ASSEMBLY
(6 Required)

Note: Shim plates shall not be placed under Bearing Assembly.



SIDE RETAINER

Equivalent rolled angle with stiffeners will be allowed in lieu of welded plates. Weight included with Structural Steel.

BILL OF MATERIAL

Item	Unit	Total
Elastomeric Bearing Assembly Type I	Each	6
Jack and Remove Existing Bearings	Each	12
Anchor Bolts 1" phi	Each	12

BEARING AT NORTH ABUTMENT
F.A.P. ROUTE 310 - SECTION 28BR-1
WARREN COUNTY
STATION 829+24.00
STRUCTURE NO. 094-0002

DESIGNED	Tom L. Kurtenbach
CHECKED	Alan M. Johnson
DRAWN	BECKY M. GURRY
CHECKED	TLK/AMJ

September 4, 2007
EXAMINED *Thomas J. Demas*
PASSED *Robert C. Anderson*
ENGINEER OF BRIDGE DESIGN
ENGINEER OF BRIDGES AND STRUCTURES