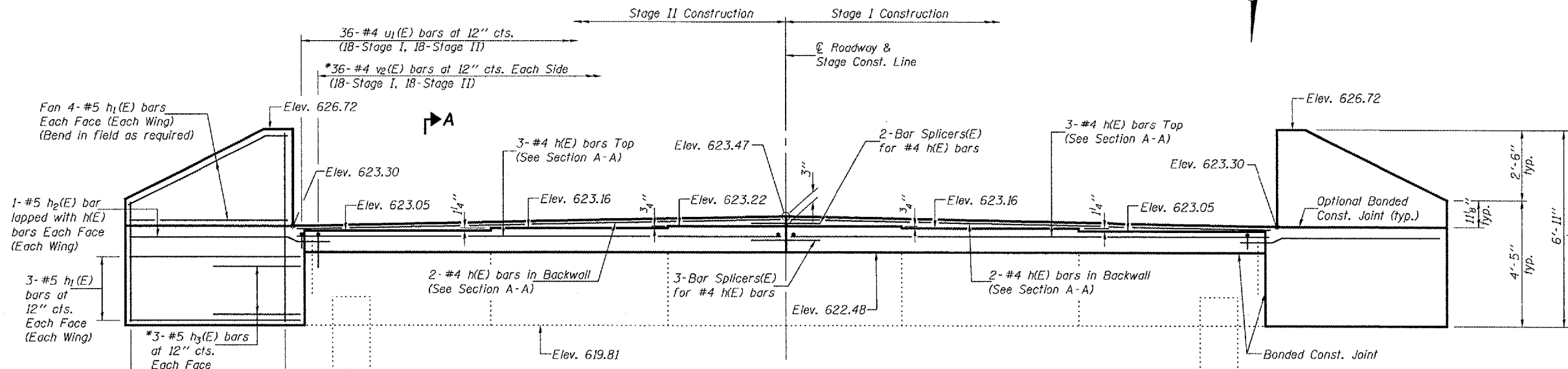


STATE OF ILLINOIS
DEPARTMENT OF TRANSPORTATION

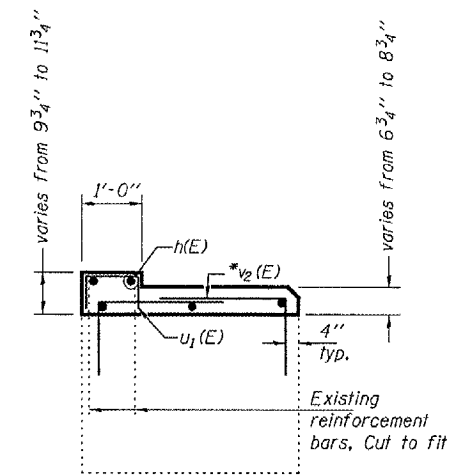
ROUTE NO. F.A.P. 310	SECTION 28BR-1	COUNTY WARREN	SHEET 97	SHEET 63	SHEET NO. 15 16 SHEETS
FED. ROAD DIST. NO. 7		ILLINOIS	FED. AID PROJECT		

Contract #88798

Notes:
Space drilled holes in existing cap to miss existing reinforcement.
All edges shall have standard 3/4" chamfer except as noted.
For Bar Splicer Details see sheet 16 of 16.

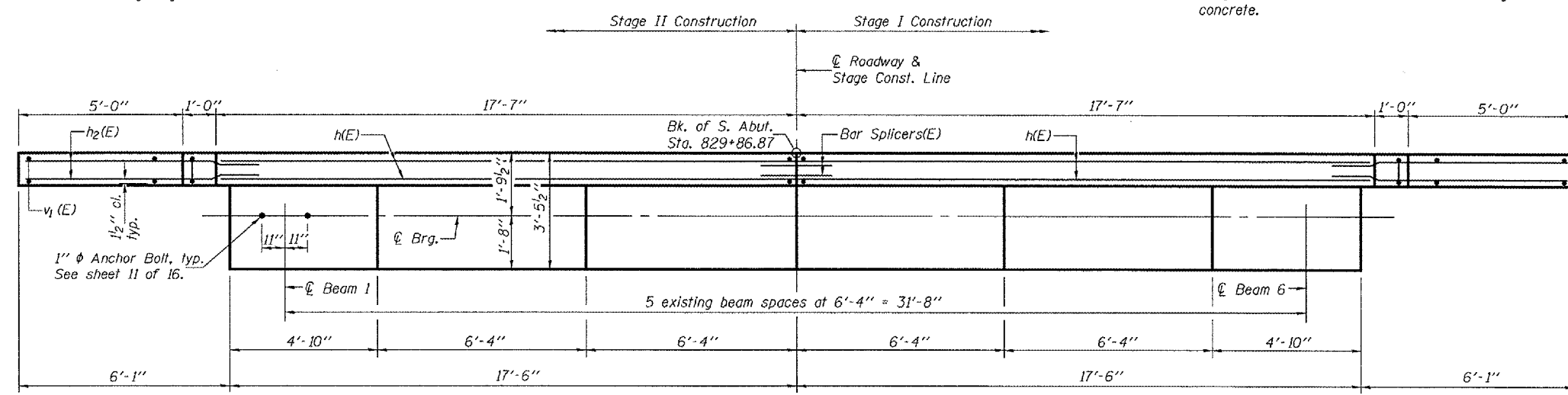


ELEVATION
(Looking North)



SECTION THRU ABUTMENT

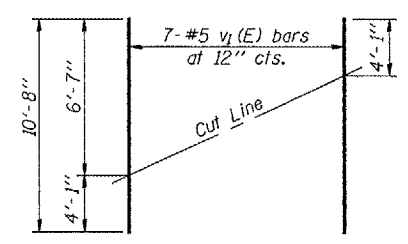
*Epoxy Grout h3(E) and v2(E) bars in 9" min. drilled holes according to Section 584 of the Standard Specifications. All grouted bars shall have 4" cl. to the edge of existing concrete.



TOP PLAN

BILL OF MATERIAL

Bar	No.	Size	Length	Shape
h(E)	10	#4	17'-3"	—
h1(E)	28	#5	5'-10"	—
h2(E)	4	#5	8'-1"	—
h3(E)	12	#5	3'-1"	—
u1(E)	36	#4	1'-11"	□
v1(E)	14	#5	10'-8"	—
v2(E)	72	#4	4'-0"	┌
Concrete Structures		Cu. Yd.	5.9	
Reinforcement Bars, Epoxy Coated		Pound	750	
Structure Excavation		Cu. Yd.	85	



FIELD CUTTING DIAGRAM

Order v1(E) full length. Cut as shown and use remainder of bars in opposite face.

BAR u1(E)

BAR v2(E)

DESIGNED	Tom L. Kurtenbach
CHECKED	Alan M. Johnson
DRAWN	BECKY M. CURRY
CHECKED	TLK/AMJ

September 4, 2007
EXAMINED *Thomas J. Demagala*
PASSED *Ralph E. Anderson*
ENGINEER OF BRIDGES AND STRUCTURES

SOUTH ABUTMENT
F.A.P. ROUTE 310 - SECTION 28BR-1
WARREN COUNTY
STATION 829+24.00
STRUCTURE NO. 094-0002