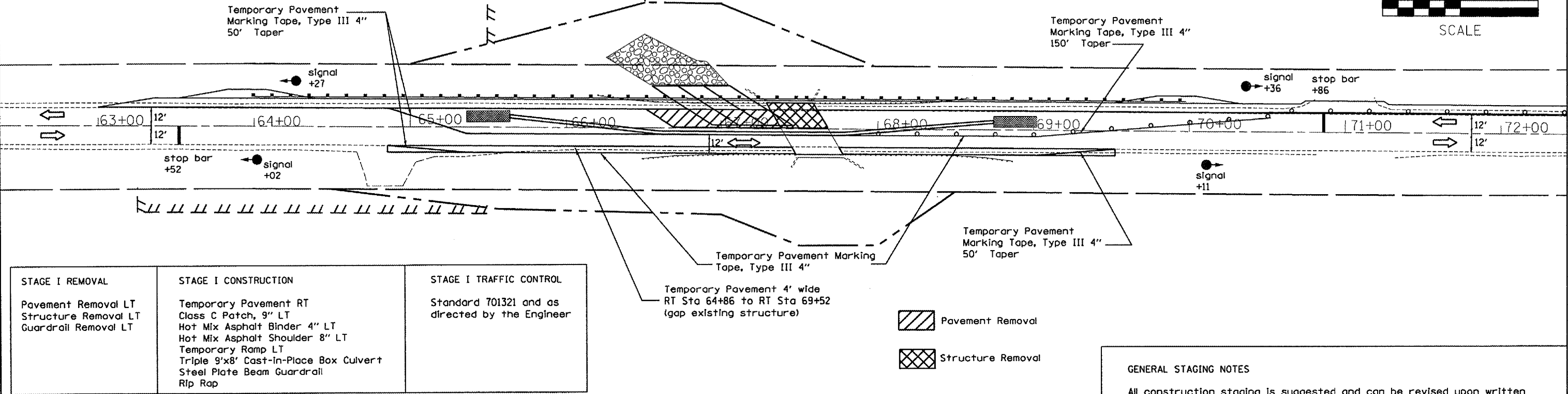
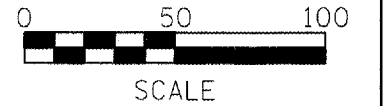


F.A.P. RTE.	SECTION	COUNTY	TOTAL SHEETS	SHEET NO.
315	1108B&R, BR-1	MCDONOUGH	80	14
STA.		TO STA.		
FED. ROAD DIST. NO.		ILLINOIS FED. AID PROJECT		

STAGE I

Temporary Barrier Wall Locations
 65+64 LT 6' to 66+60 RT 4' (1:12 Taper)
 66+60 RT 4' to 67+78 RT 4'
 67+78 RT 4' to 68+74 LT 6' (1:12 Taper)

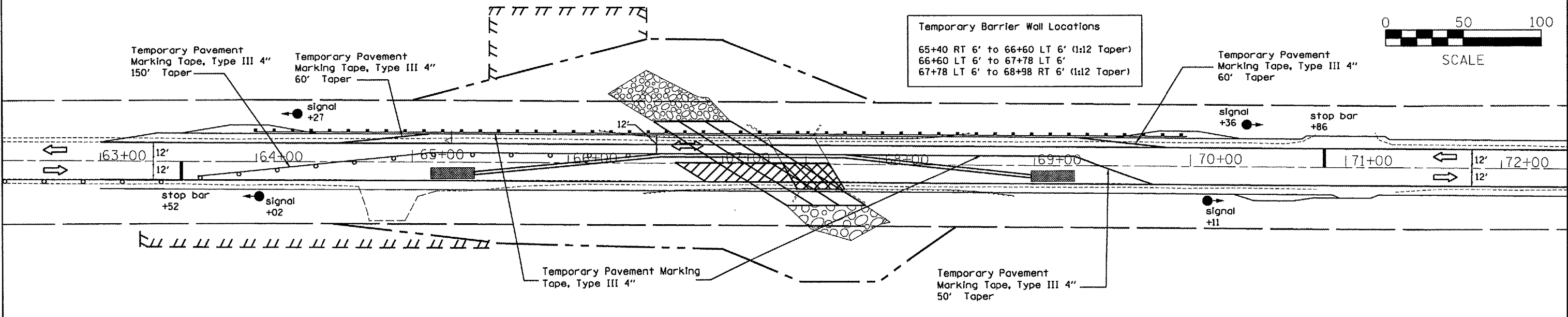
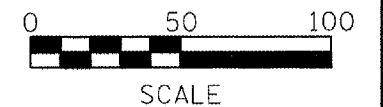


STAGE I REMOVAL	STAGE I CONSTRUCTION	STAGE I TRAFFIC CONTROL
Pavement Removal LT Structure Removal LT Guardrail Removal LT	Temporary Pavement RT Class C Patch, 9" LT Hot Mix Asphalt Binder 4" LT Hot Mix Asphalt Shoulder 8" LT Temporary Ramp LT Triple 9'x8' Cast-in-Place Box Culvert Steel Plate Beam Guardrail Rip Rap	Standard 701321 and as directed by the Engineer

GENERAL STAGING NOTES
 All construction staging is suggested and can be revised upon written approval from the resident engineer two weeks prior to starting work. There will be no adjustment in the traffic control unit price due to the contractor changing the planned construction sequence.

STAGE II

Temporary Barrier Wall Locations
 65+40 RT 6' to 66+60 LT 6' (1:12 Taper)
 66+60 LT 6' to 67+78 LT 6'
 67+78 LT 6' to 68+98 RT 6' (1:12 Taper)



STAGE II REMOVAL	STAGE II CONSTRUCTION	STAGE II TRAFFIC CONTROL
Temporary Pavement Removal RT Pavement Removal RT Structure Removal RT Guardrail Removal RT	Triple 9'x8' Cast-in-Place Box Culvert RT Rip Rap RT Steel Plate Beam Guardrail RT Class C Patch, 9" RT Hot Mix Asphalt Binder Course 4" RT Hot Mix Asphalt Shoulder 8" RT	Standard 701321 and as directed by the Engineer

REVISIONS	
NAME	DATE

ILLINOIS DEPARTMENT OF TRANSPORTATION
STAGE CONSTRUCTION
 SCALE: VERT. DATE: HORIZ. DATE: DRAWN BY: CHECKED BY:

PLOT DATE = 8/6/2007
 FILE NAME = c:\projects\comp1351\road.dgn
 PLOT SCALE = 63.5000" / IN.
 USER NAME = jgraydon