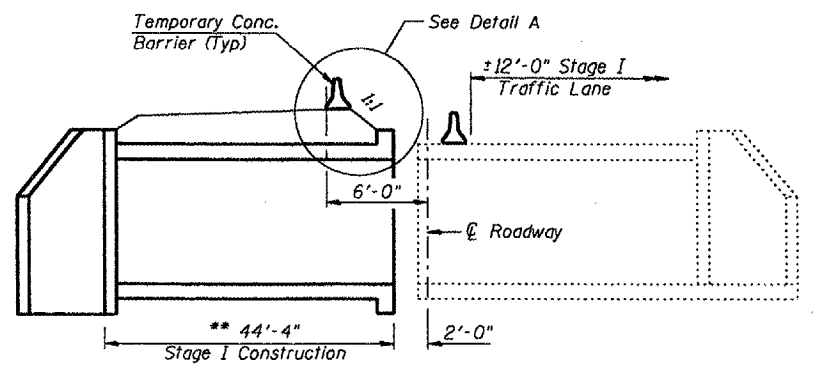
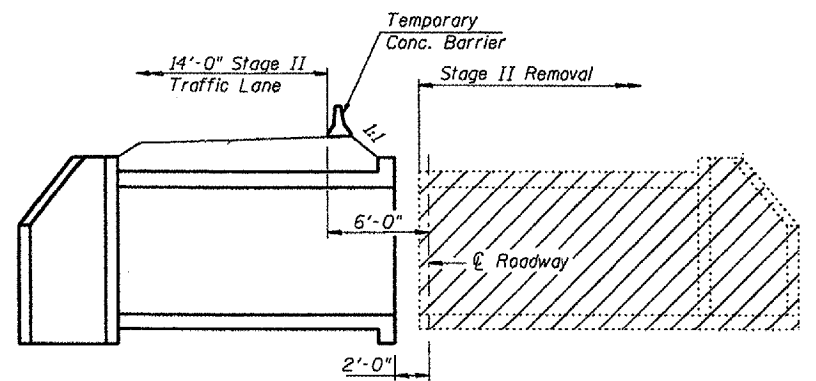


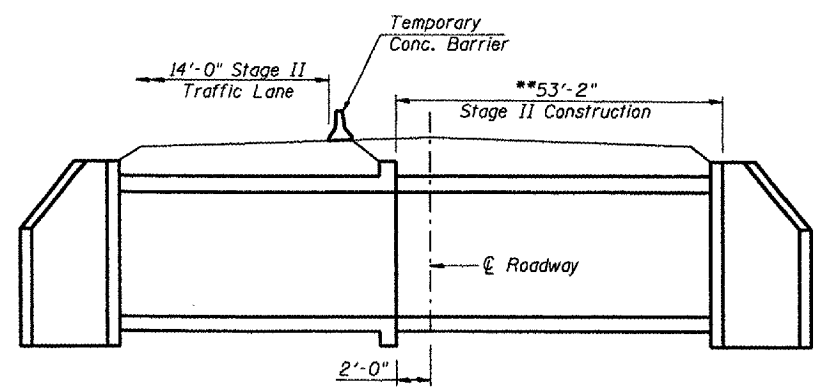
**STAGE I REMOVAL**



**STAGE I CONSTRUCTION**



**STAGE II REMOVAL**

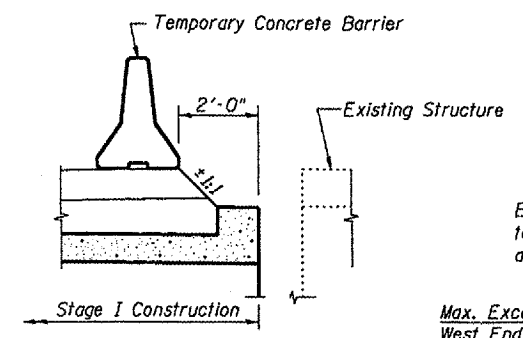


**STAGE II CONSTRUCTION**

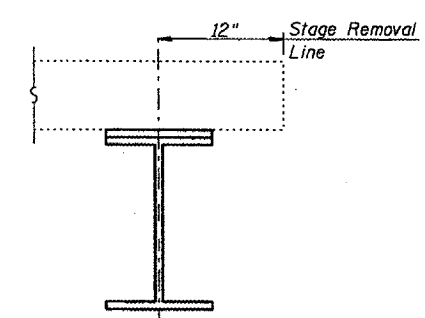
\*\* Along  $\bar{C}$  Culvert

**NOTES**

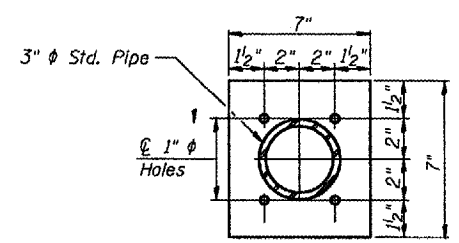
1. Hatched area indicates removal of existing structure.
2. All staging cross sections are looking south.
3. All dimensions are perpendicular to  $\bar{C}$  U.S. 136 unless noted otherwise.
4. For details of Temporary Concrete Barrier, see Sheet 3 of 8.
5. For quantity of Temporary Concrete Barrier, see Roadway Plans.



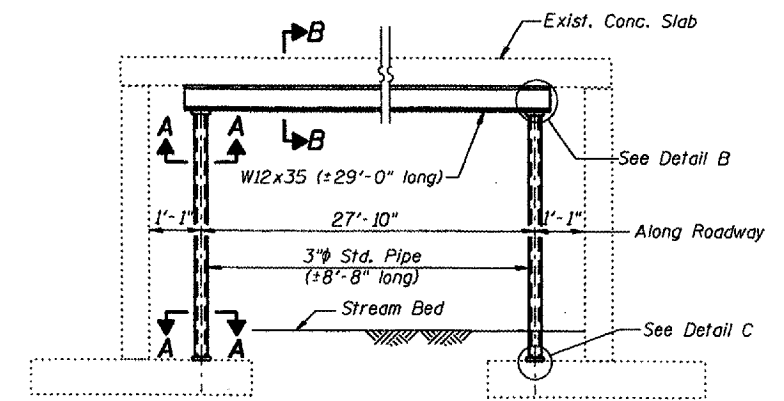
**DETAIL A**



**SECTION B-B**

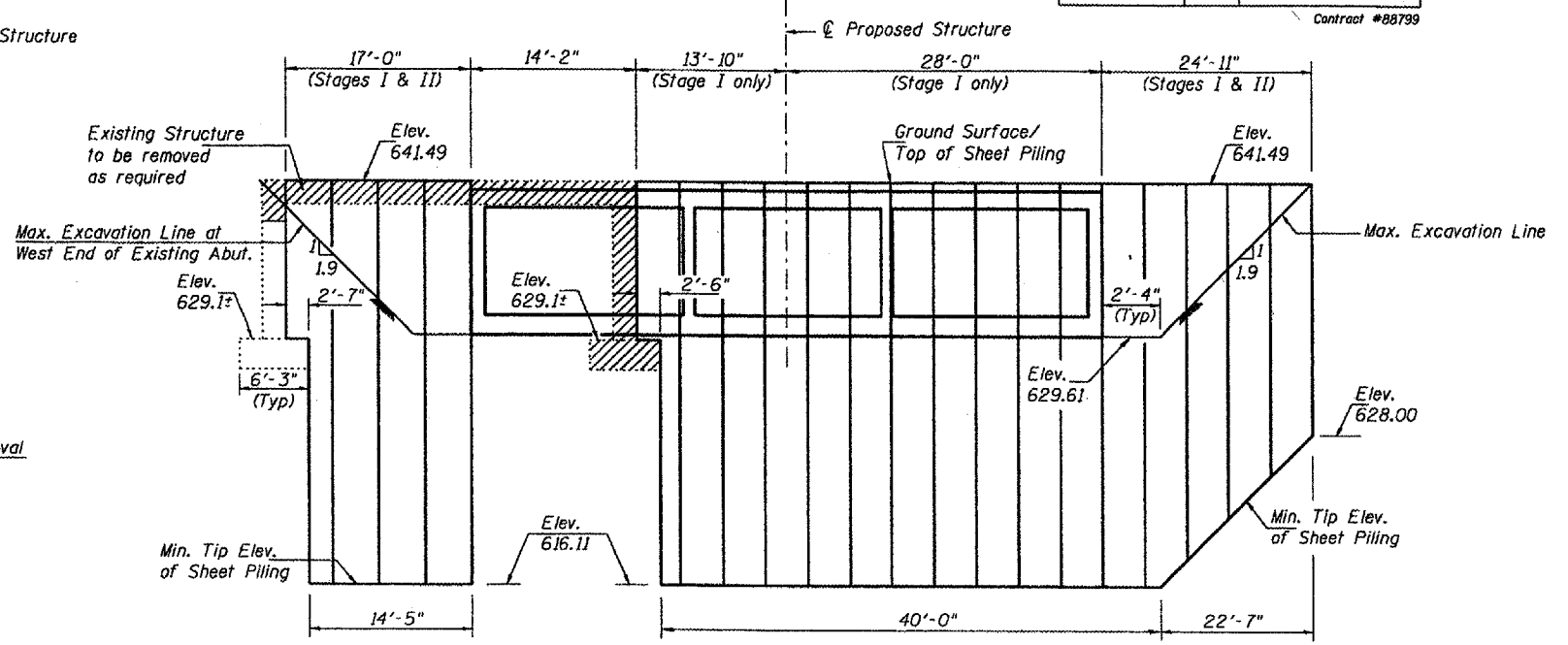


**SECTION A-A**



**ELEVATION - TEMPORARY SUPPORT SYSTEM**

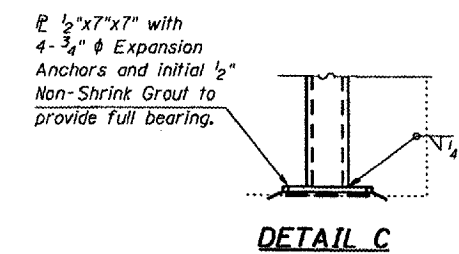
(Place Temporary Support prior to Stage I Removal)  
 Estimated weight of structural steel for the temporary support system = 1200 Lbs.  
 No painting required for Temporary Support System.



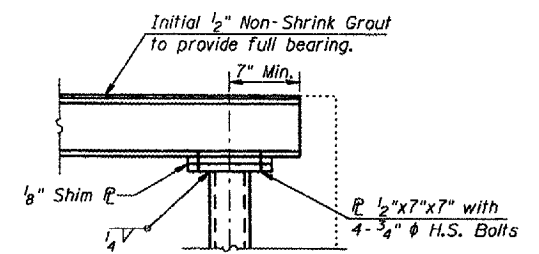
**TEMPORARY SHEET PILING**

(Looking West - dimensions along  $\bar{C}$  roadway)

If the contractor chooses to alter the temporary cantilevered sheet piling design requirements shown on the plans, a design submittal including plan details and calculations will be required for review and acceptance by the Engineer.  
 The contractor shall connect the first sheet to the existing abutment wall to ensure stability of sheets driven to the top of the existing footing. This connection shall be reviewed and accepted by the Engineer and included in the cost for Temporary Sheet Piling.  
 Hard driving may be encountered during the sheet piling installation. The Contractor shall provide the appropriate driving equipment for the soil conditions indicated on the boring logs.  
 The minimum required section modulus for the temporary sheet piling = 11.1 in<sup>3</sup>/ft.



**DETAIL C**



**DETAIL B**

**LIN ENGINEERING, LTD.**  
 20 N. Chestnut  
 Chicago, Illinois 60610  
 Phone: 312-467-4500  
 Fax: 312-467-4506

REVISIONS	
NAME	DATE

ILLINOIS DEPARTMENT OF TRANSPORTATION  
**STAGE CONSTRUCTION DETAILS**  
 F.A.P. RTE 315 (U.S. ROUTE 136)  
 OVER CAMP CREEK  
 SECTION (108B)BR-1  
 MCDONOUGH COUNTY  
 STA. 67+23.00  
 STRUCTURE NO. 055-2004