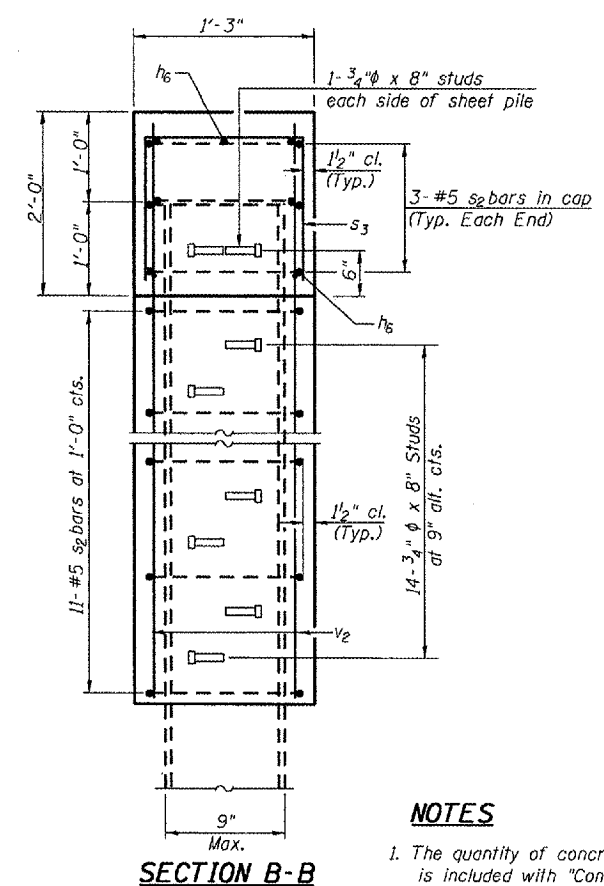


Contract #88799
BILL OF MATERIAL

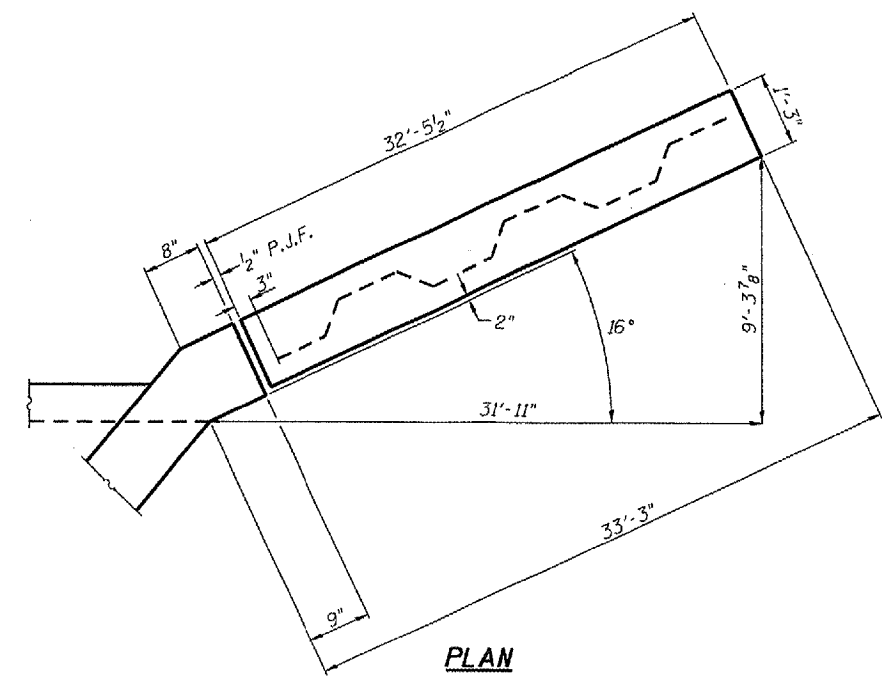
Bar	No.	Size	Length	Shape
a	344	#9	31'-7"	C
a1	172	#9	35'-6"	—
a2	180	#4	11'-3"	—
d	60	#4	4'-6"	L
h	438	#5	22'-11"	—
h1	438	#5	27'-4"	—
h2	28	#6	28'-4"	—
h3	28	#7	29'-0"	—
h4	36	#7	8'-0"	L
h5	26	#7	12'-10"	L
h6	14	#5	32'-5"	—
v	398	#5	8'-1"	—
v1	396	#5	4'-2"	—
v2	20	#4	12'-4"	—
s	165	#4	4'-11"	□
s1	55	#4	4'-9"	□
s2	34	#5	3'-6"	□
s3	64	#5	4'-6"	□
Concrete Box Culverts	Cu. Yd.	291.4		
Reinforcement Bars	Pound	93170		
Permanent Steel Sheet Piling	Sq. Ft.	1521		



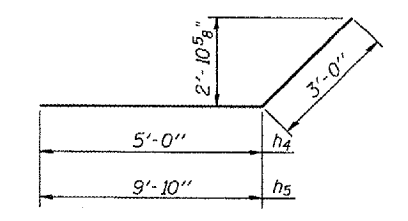
SECTION A-A

SECTION B-B

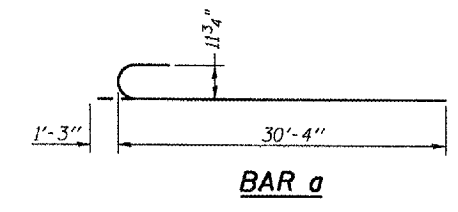
- NOTES**
- The quantity of concrete for sheet pile wingwall cap is included with "Concrete Box Culverts".
 - The steel pile section chosen for use in each area shall be selected by the Contractor from the table provided in Special Provision "Permanent Steel Sheet Piling" and must have an "Effective Section Modulus" larger than or equal to that shown on the plans.
 - Fy (Min.) = 38.5 ksi for steel sheet piling.
 - Work this sheet with Sheet 4 of B.



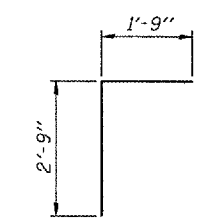
PLAN



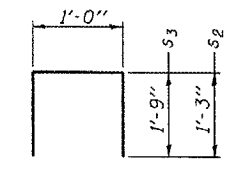
BARS h4 & h5



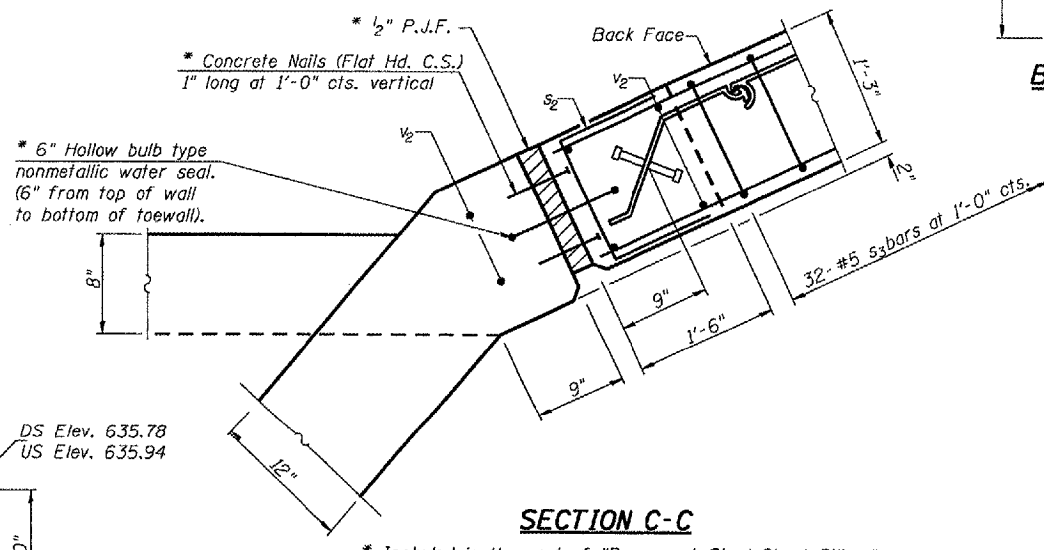
BAR a



BAR d

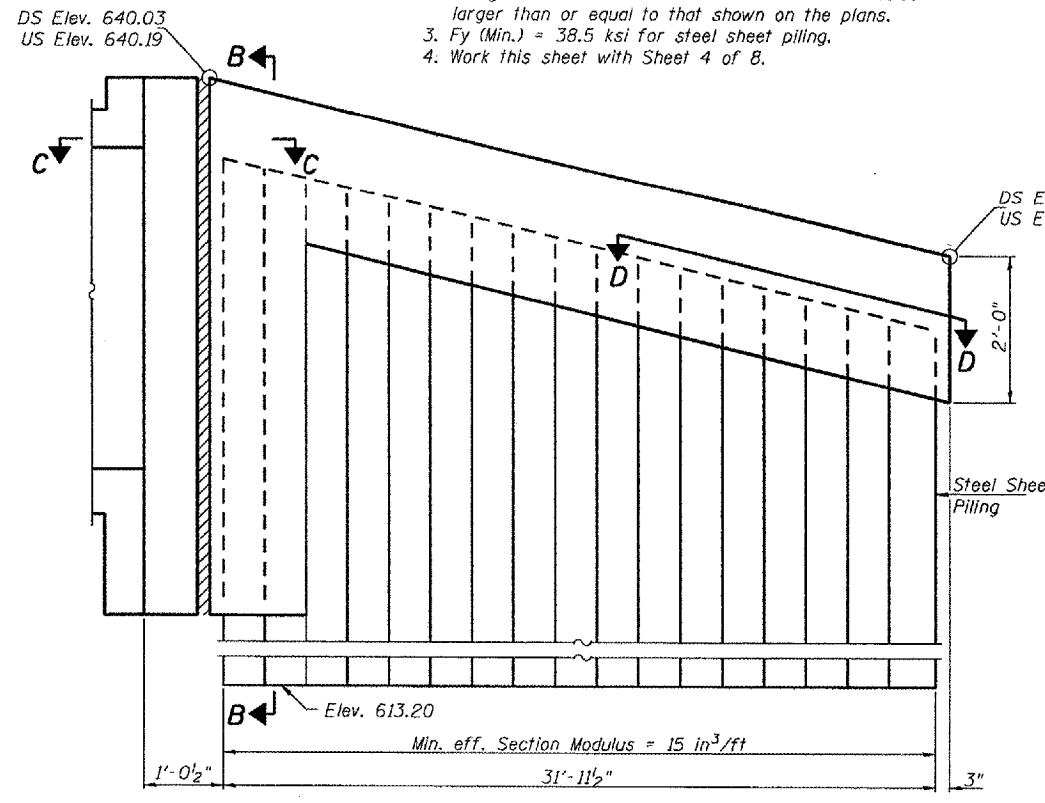


BARS s2 & s3

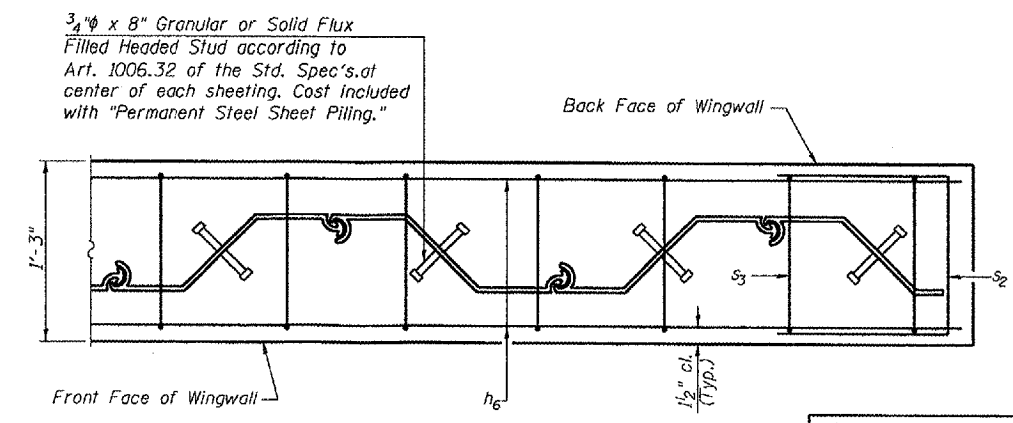


SECTION C-C

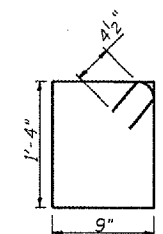
* Included in the cost of "Permanent Steel Sheet Piling."



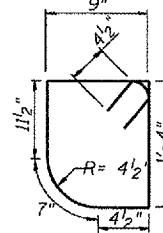
ELEVATION



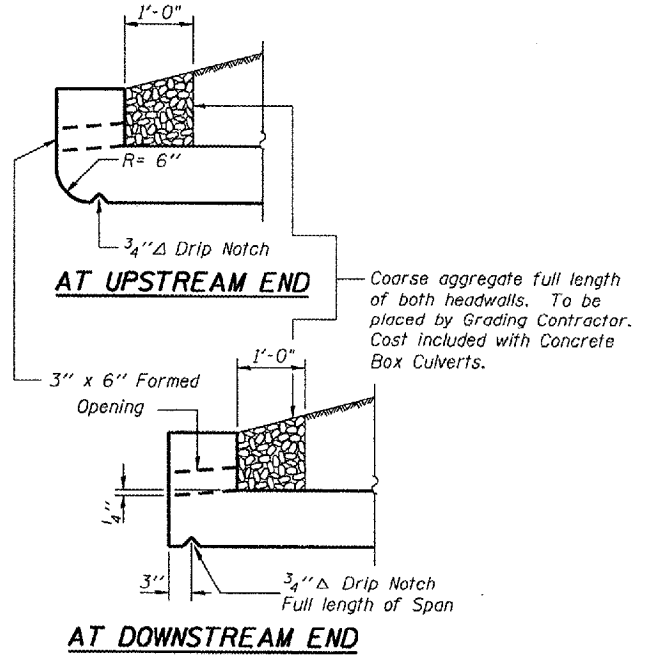
SECTION D-D



BAR s



BAR s1



DRAIN DETAIL

LIN ENGINEERING, LTD.
200 N. Chestnut
Chicago, Illinois 60610
Phone: 312-467-4600
Fax: 312-467-4700
Designed by: AMB Checked by: MTH Drawn by: JMD
Date: 04/04 File: 0522004.DWG

REVISIONS	
NAME	DATE

ILLINOIS DEPARTMENT OF TRANSPORTATION
CULVERT DETAILS
F.A.P. RTE 315 (U.S. ROUTE 136)
OVER CAMP CREEK
SECTION (108B)BR-1
MCDONOUGH COUNTY
STA. 67+23.00
STRUCTURE NO. 055-2004