

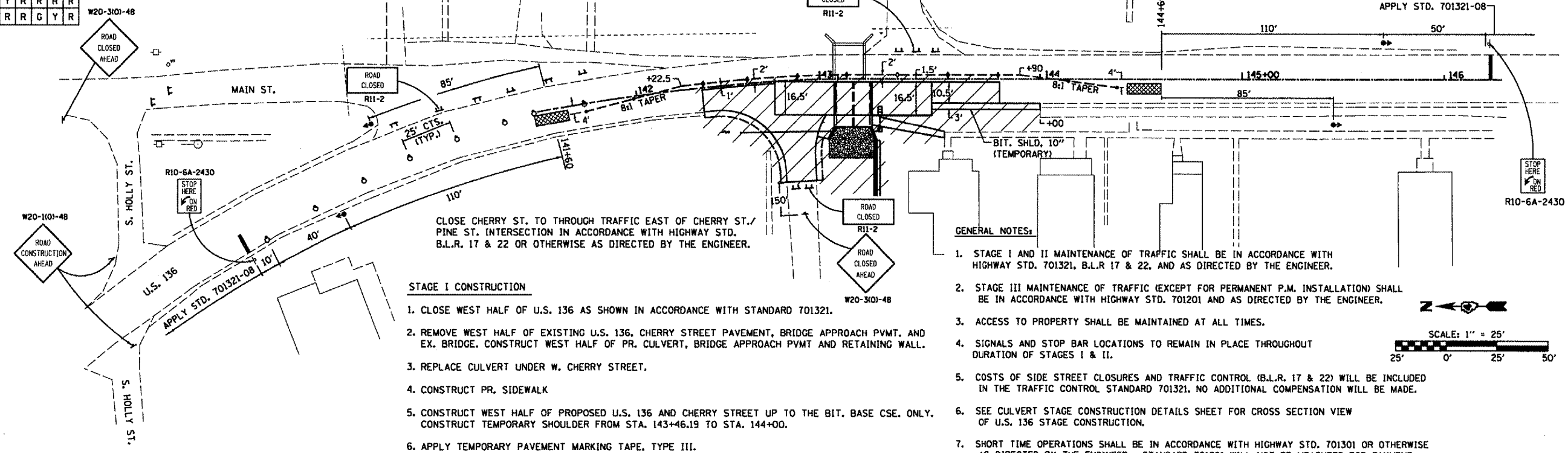
SEQUENCE OF OPERATIONS						
PHASE	A	B				
INTERVAL	1	2	3	4	5	6
EASTBOUND	G	Y	R	R	R	R
WESTBOUND	R	R	R	G	Y	R

### MAINTENANCE OF TRAFFIC - STAGE I

CLOSE MAIN ST. TO THROUGH TRAFFIC SOUTH OF S. HOLLY ST./ MAIN ST. INTERSECTION IN ACCORDANCE WITH HIGHWAY STD. B.L.R. 17 & 22 OR OTHERWISE AS DIRECTED BY THE ENGINEER.

CLOSE CHERRY ST. TO THROUGH TRAFFIC WEST OF CHERRY ST./ E. MAIN ST. INTERSECTION IN ACCORDANCE WITH HIGHWAY STD. B.L.R. 17 & 22 OR OTHERWISE AS DIRECTED BY THE ENGINEER.

F.A. RITE	SECTION	COUNTY	TOTAL SHEETS
315	1108BRR-BR-1	MCDONOUGH	8045
STA.	TO STA.		
FED. ROAD DIST. NO. ILLINOIS FED. AID PROJECT			
CONTRACT NO. 88799			



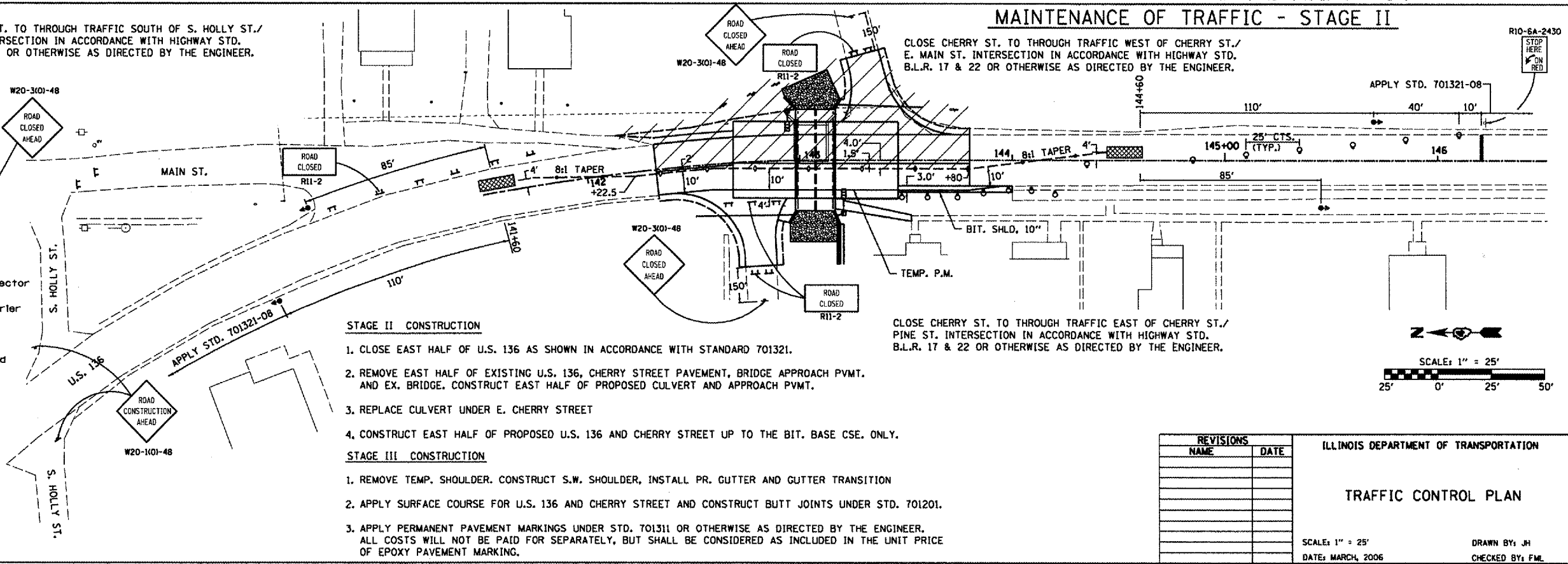
### MAINTENANCE OF TRAFFIC - STAGE II

CLOSE MAIN ST. TO THROUGH TRAFFIC SOUTH OF S. HOLLY ST./ MAIN ST. INTERSECTION IN ACCORDANCE WITH HIGHWAY STD. B.L.R. 17 & 22 OR OTHERWISE AS DIRECTED BY THE ENGINEER.

CLOSE CHERRY ST. TO THROUGH TRAFFIC WEST OF CHERRY ST./ E. MAIN ST. INTERSECTION IN ACCORDANCE WITH HIGHWAY STD. B.L.R. 17 & 22 OR OTHERWISE AS DIRECTED BY THE ENGINEER.

**SYMBOLS**

- Work area
- Sign
- Drum with steady burning light
- Traffic signal
- Type C Bidirectional reflector
- Temporary concrete barrier
- Impact attenuator
- Steady burning lights and double vertical panels
- Type III Barricade



REVISIONS	
NAME	DATE

ILLINOIS DEPARTMENT OF TRANSPORTATION

**TRAFFIC CONTROL PLAN**

SCALE: 1" = 25'  
DATE: MARCH, 2006

DRAWN BY: JH  
CHECKED BY: FLM