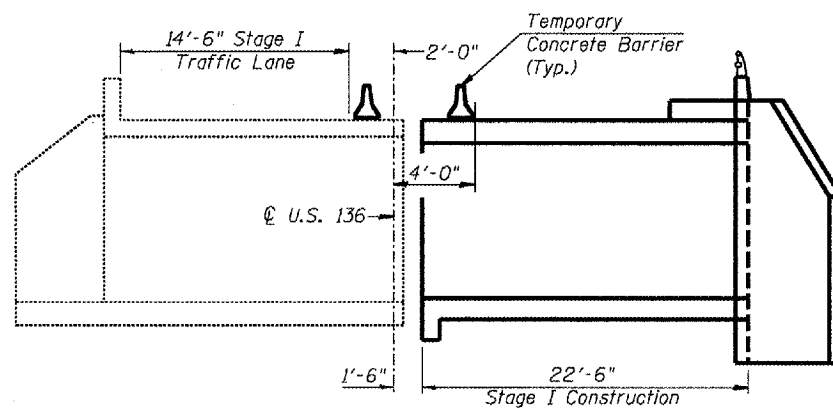
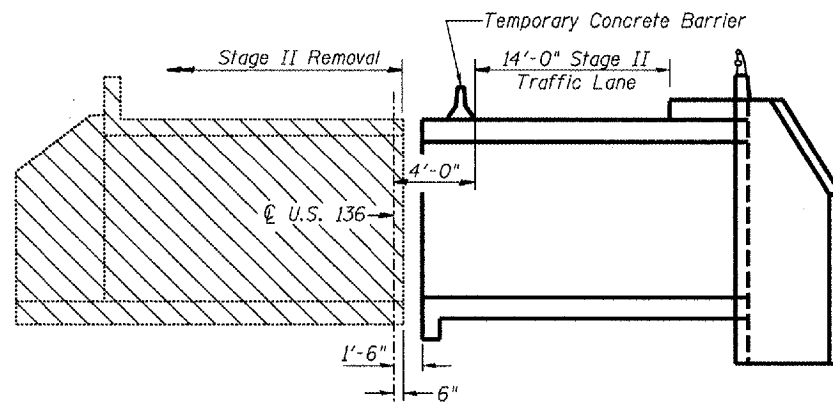


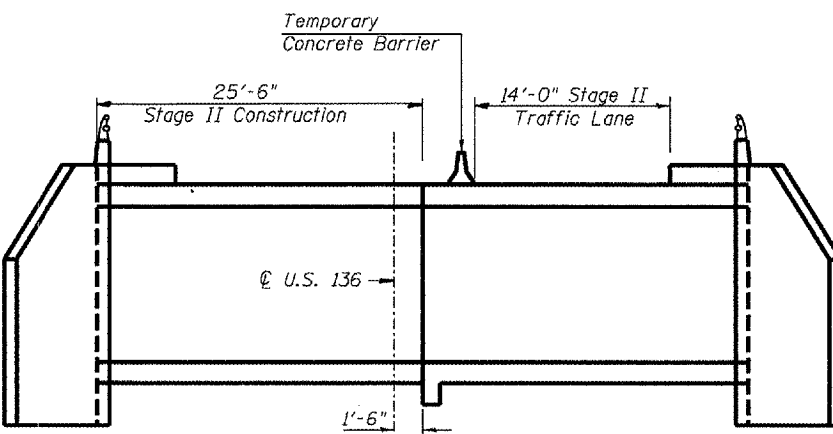
STAGE I REMOVAL



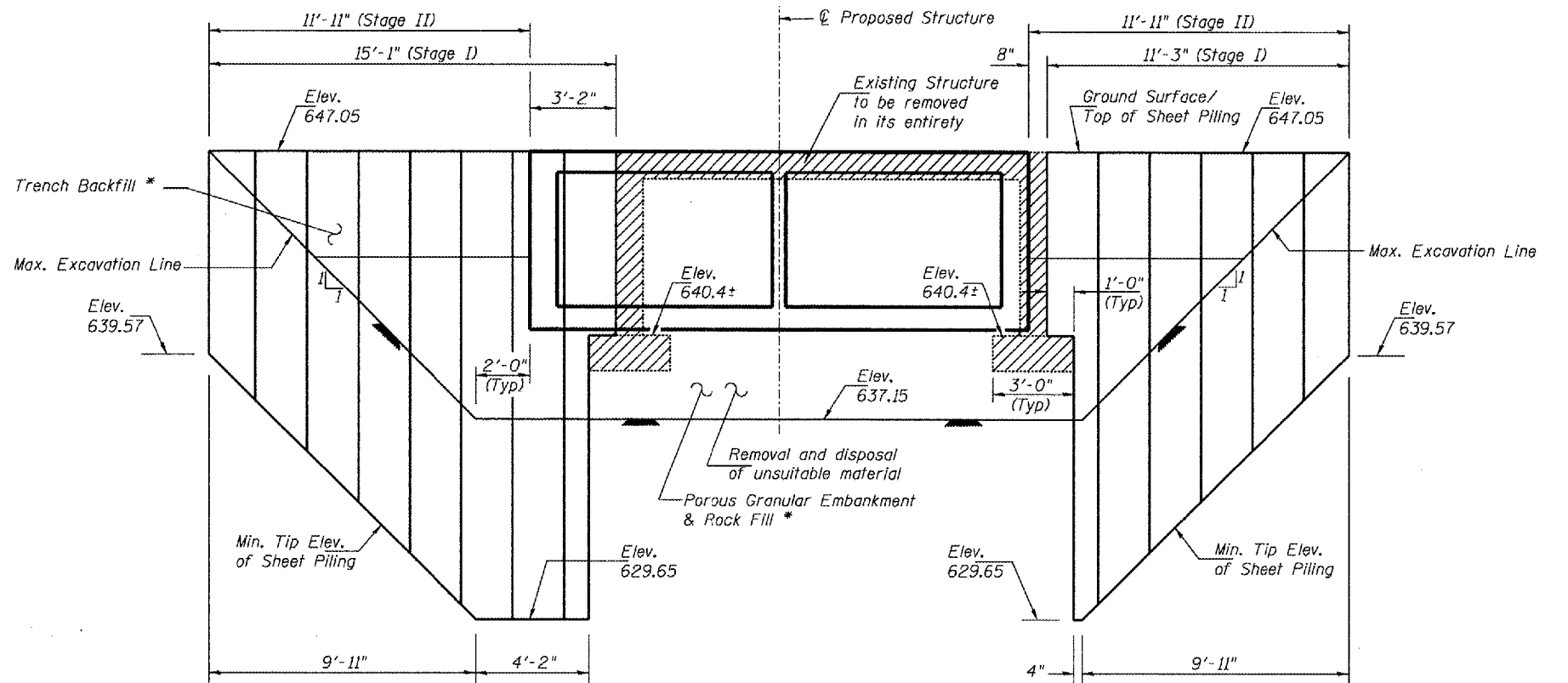
STAGE I CONSTRUCTION



STAGE II REMOVAL



STAGE II CONSTRUCTION



TEMPORARY SHEET PILING

(Dimensions are at Right L's to structure)
(Looking West)

If the contractor chooses to alter the temporary cantilevered sheet piling design requirements shown on the plans, a design submittal including plan details and calculations will be required for review and acceptance by the Engineer. The contractor shall connect the first sheet to the existing abutment wall to ensure stability of sheets driven to the top of the existing footing. This connection shall be reviewed and accepted by the Engineer and included in the cost for Temporary Sheet Piling. The minimum required section modulus for the temporary sheet piling = 6.3 in³/ft.

* Box culvert to be backfilled according to the applicable portions of the "Backfill for Culverts" detail on sheet 24.

NOTES

1. Hatched area in staging details indicates removal of existing structure.
2. All staging cross sections are looking south.
3. All dimensions are perpendicular to Tangent at Sta. 143+11.15.
4. For details of Temporary Concrete Barrier, see Sheet 3 of 8.
5. For quantity of Temporary Concrete Barrier, see Roadway Plans.

LIN ENGINEERING, LTD.
20 W. Chestnut
Clothes, Illinois 62629
(202) 483-1650
FAX (202) 483-4706
Designed By: WX
Checked By: MTH | Drawn By: JMD
Date: 03/2004
File: 0525200.DWG

REVISIONS	
NAME	DATE
dml	8/20/07
changed method of	
backfill	

ILLINOIS DEPARTMENT OF TRANSPORTATION
STAGE CONSTRUCTION DETAILS
F.A. RTE 315 (U.S. ROUTE 136)
OVER CAMP CREEK TRIBUTARY
SECTION (108B)BR
McDONOUGH COUNTY
STA. 143+07.44
S.N. 055-2500