

| F.A.S. RTE. | SECTION | COUNTY | TOTAL SHEETS | SHEET NO. |
|-----------------------|---------|---------------------------|--------------|-----------|
| 1513 | 5BR-1 | CHAMPAIGN | 38 | 17 |
| STA. | | TO STA. | | |
| FED. ROAD DIST. NO. 5 | | ILLINOIS FED. AID PROJECT | | |

**SUPERSTRUCTURE
BILL OF MATERIAL**

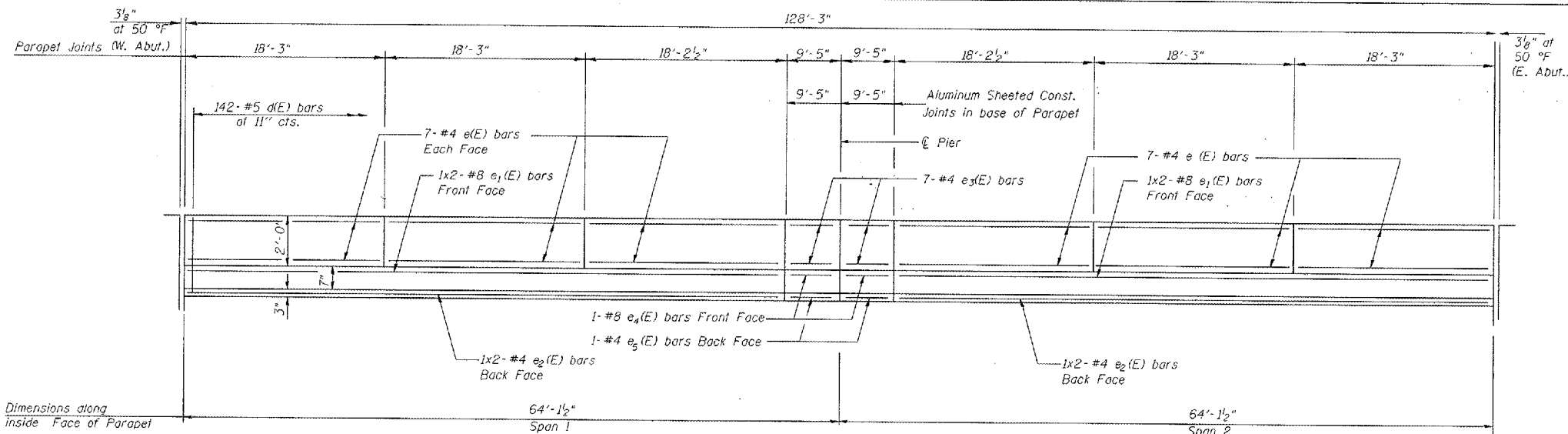
| Bar | No. | Size | Length (ft) | Shape |
|----------------------------------|-----|---------|-------------|-------|
| a(E) | 193 | *5 | 33'-2" | |
| a ₁ (E) | 155 | *5 | 34'-0" | |
| a ₂ (E) | 192 | *6 | 4'-6" | |
| a ₃ (E) | 8 | *5 | 27'-3" | |
| b(E) | 190 | *5 | 26'-11" | |
| b ₁ (E) | 35 | *6 | 38'-0" | |
| b ₂ (E) | 124 | *5 | 33'-3" | |
| d(E) | 284 | *5 | 5'-7" | |
| d ₁ (E) | 284 | *5 | 7'-9" | |
| e(E) | 84 | *4 | 17'-11" | |
| e ₁ (E) | 8 | *8 | 29'-0" | |
| e ₂ (E) | 8 | *4 | 27'-11" | |
| e ₃ (E) | 28 | *4 | 9'-2" | |
| e ₄ (E) | 4 | *8 | 9'-2" | |
| e ₅ (E) | 4 | *4 | 9'-2" | |
| x(E) | 64 | *5 | 4'-1" | |
| Item | | Unit | Qty. | |
| Reinforcement Bars, Epoxy Coated | | lb | 31620 | |
| Concrete Superstructure | | Cu. Yd. | 157.7 | |
| Floor Drains | | Each | 16 | |

Bars indicated thus 1x2-#5 etc. indicates 1 line of bars with 2 lengths per line.
Work this sheet with sheet 5 of 19.

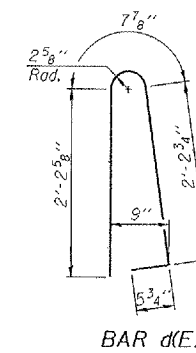
Slip-Forming of the Parapet is not allowed.

MIN. BAR LAP PARAPET

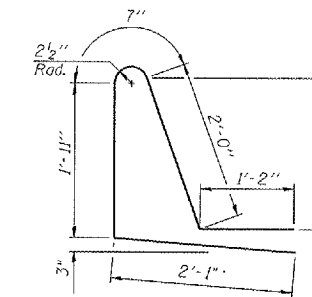
- #4 bars = 1'-4"
- #5 bars = 1'-8"
- #8 bars = 3'-5"



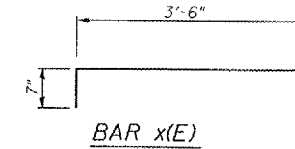
INSIDE ELEVATION OF PARAPET



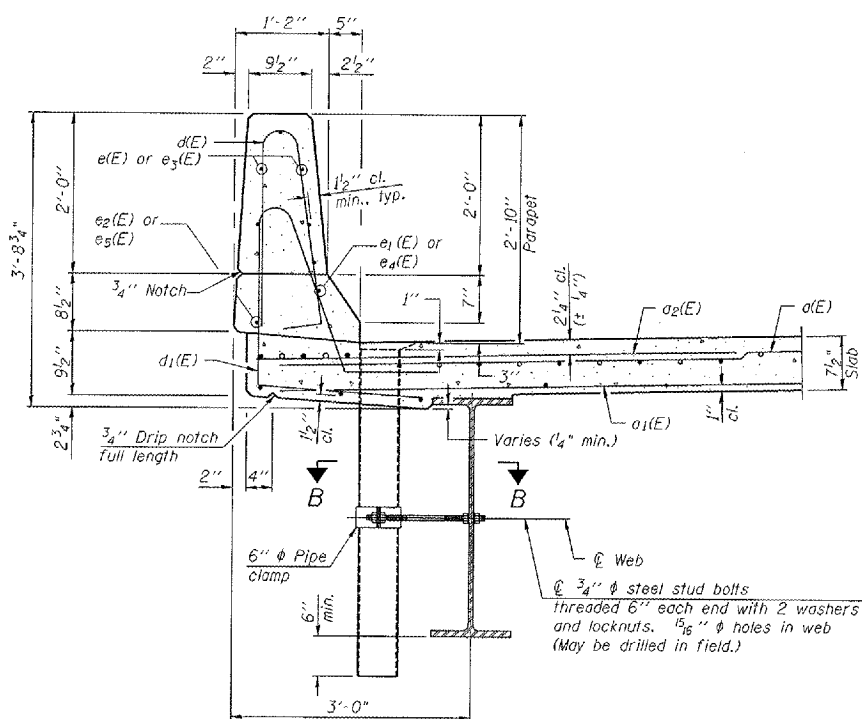
BAR d(E)



BAR d1(E)

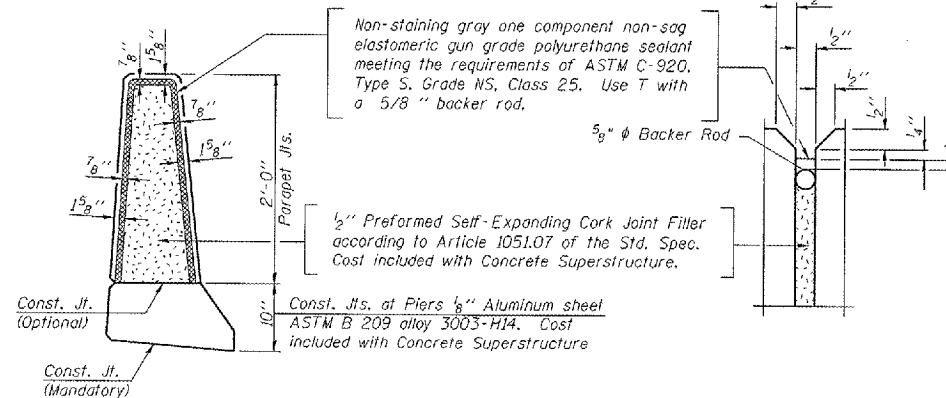


BAR x(E)

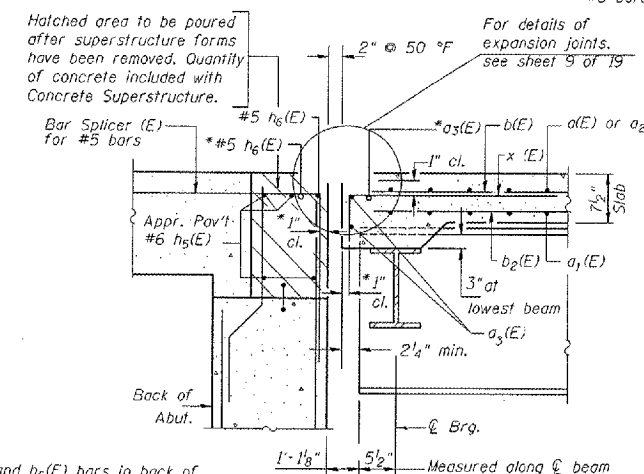


SECTION THRU PARAPET

Note: Floor drains need not be painted.
Fiberglass pipe shall conform to ASTM D2996 with short-time rupture strength hoop tensile stress of 30,000 psi minimum.



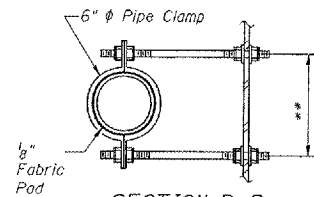
PARAPET JOINT DETAILS



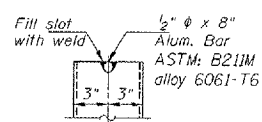
SECTION A-A

(W. Abut. shown. E. Abut. similar)
(Dimensions are at Rt. L's except as noted)

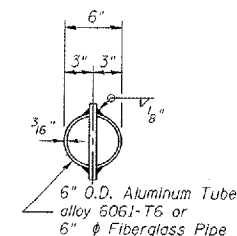
** Dimension as required by Pipe Clamp



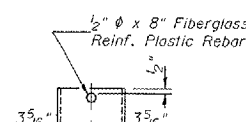
SECTION B-B



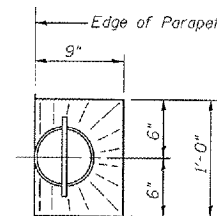
ALUMINUM TUBE



TOP PLAN (Showing Aluminum Tube)



FIBERGLASS PIPE



TOP PLAN

*Place a₃(E) and h₆(E) bars in back of anchor studs as shown if required to maintain 1" cl. (±0-1/8").

| REVISIONS | |
|-----------|------|
| NAME | DATE |
| | |
| | |
| | |
| | |
| | |
| | |
| | |
| | |
| | |

ILLINOIS DEPARTMENT OF TRANSPORTATION
SUPERSTRUCTURE DETAILS
IL ROUTE 10 OVER CAMP CREEK
FAS RTE. 1513 SECTION 5BR-1
STA. 16+69.00
CHAMPAIGN COUNTY STR. 010-0275
SCALE: N.T.S. DRAWN BY LP
DATE MAY 2007 CHECKED BY MJS

TUG PROJ. 3106078-02
PLUT DATE: 4/12/2007 12:24:42 PM
FILE NAME: s:\01001\010101513\5BR-1\02020\superstru.dgn