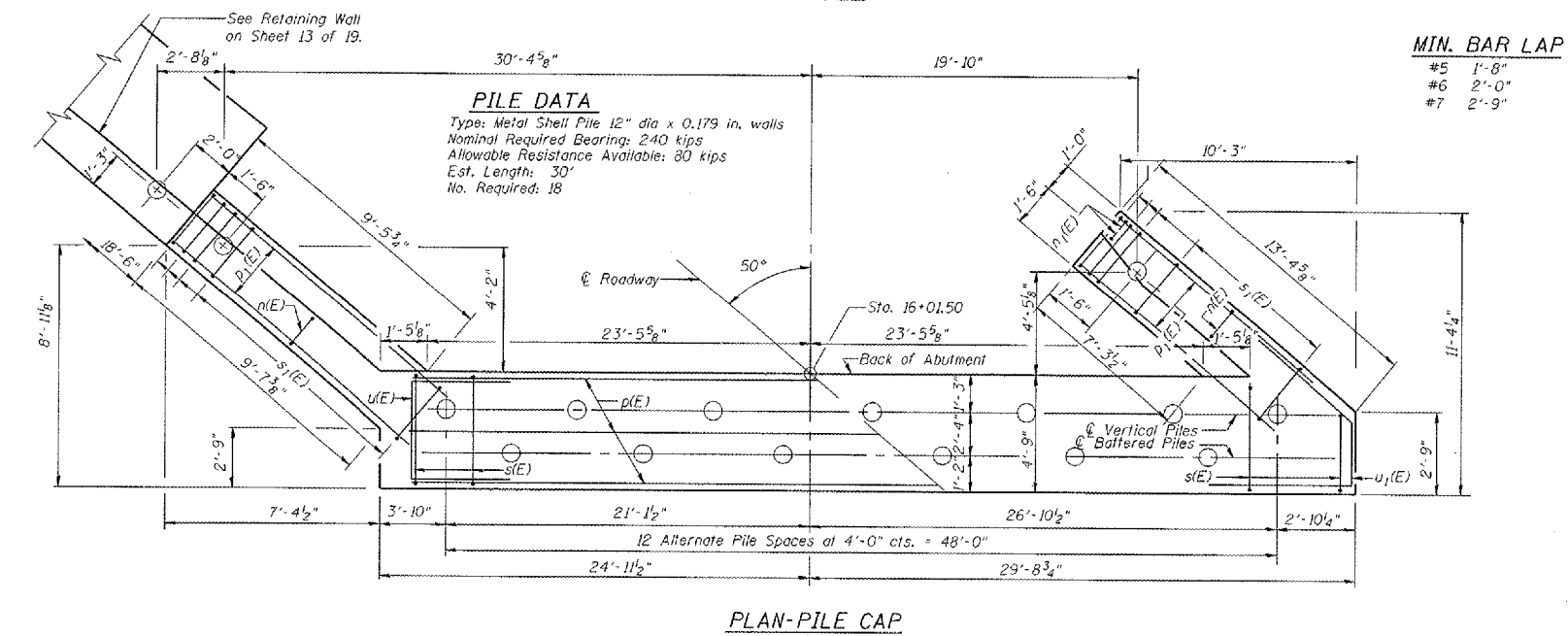
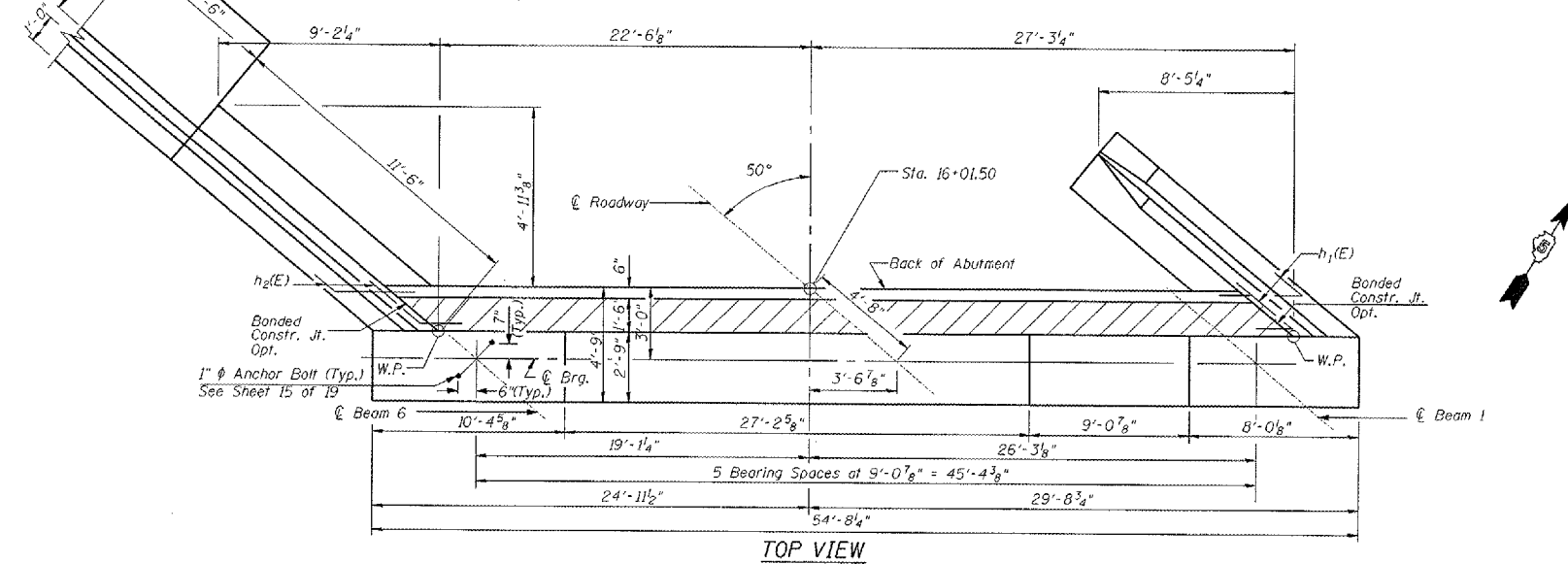
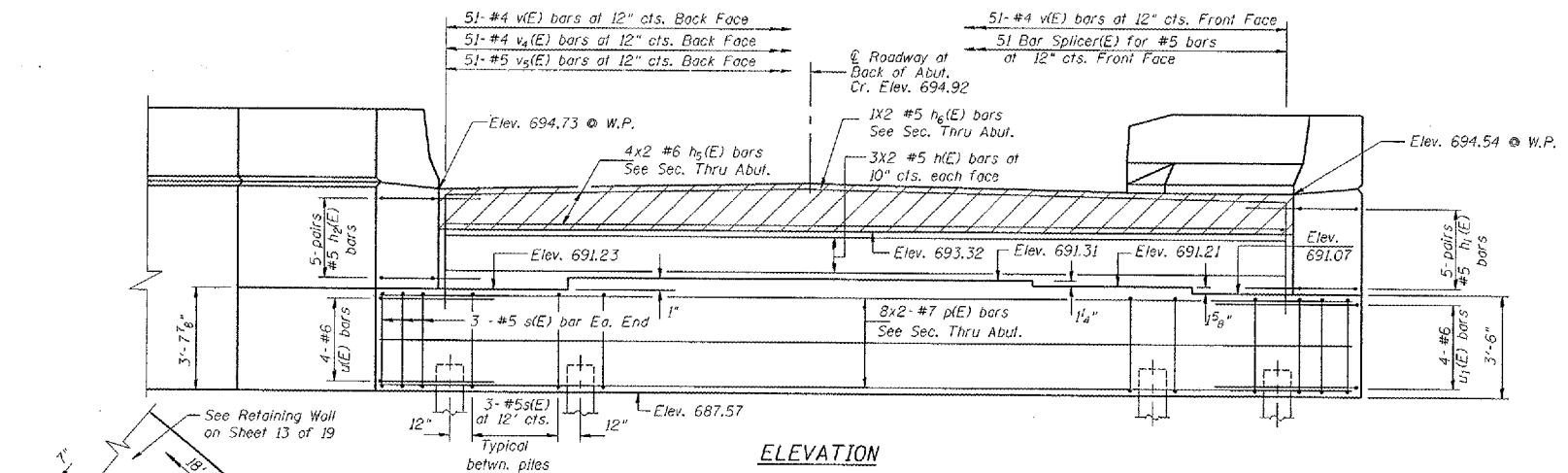


F.A.S. RTE.	SECTION	COUNTY	TOTAL SHEETS	SHEET NO.
1513	5BR-1	CHAMPAIGN	38	22
STA.		TO STA.		
FED. ROAD DIST. NO. 5		ILLINOIS FED. AID PROJECT		
SHEET 11 OF 19 SHEETS				

**WEST ABUTMENT  
BILL OF MATERIAL**

Bar	No.	Size	Length (ft.)	Shape
h(E)	12	#5	26'-6"	
h <sub>1</sub> (E)	10	#5	5'-9"	
h <sub>2</sub> (E)	10	#5	5'-9"	
h <sub>3</sub> (E)	9	#4	12'-10"	
h <sub>4</sub> (E)	7	#4	11'-2"	
h <sub>5</sub> (E)	8	#6	25'-9"	
h <sub>6</sub> (E)	2	#5	25'-9"	
h <sub>7</sub> (E)	11	#4	18'-2"	
h <sub>8</sub> (E)	7	#4	18'-2"	
h <sub>9</sub> (E)	2	#4	9'-4"	
h <sub>10</sub> (E)	12	#4	11'-2"	
n(E)	41	#6	10'-8"	
n <sub>1</sub> (E)	12	#6	5'-4"	
p(E)	16	#7	28'-6"	
p <sub>1</sub> (E)	12	#7	11'-5"	
p <sub>2</sub> (E)	8	#7	18'-2"	
s(E)	42	#5	16'-1"	
s <sub>1</sub> (E)	26	#5	9'-7"	
s <sub>2</sub> (E)	20	#5	15'-3"	
u(E)	4	#6	11'-5"	
u <sub>1</sub> (E)	4	#6	11'-5"	
v(E)	102	#4	4'-8"	
v <sub>1</sub> (E)	39	#6	6'-2"	
v <sub>2</sub> (E)	46	#6	6'-0"	
v <sub>3</sub> (E)	6	#6	5'-5"	
v <sub>4</sub> (E)	51	#4	3'-3"	
v <sub>5</sub> (E)	51	#5	2'-6"	
Structure Excavation			Cu. Yd.	210
Concrete Structures			Cu. Yd.	67.3
Reinforcement Bars, Epoxy Coated			Pound	6675
Furnishing Metal Shell Piles, 12"x0.179"			Ft	540
Driving Piles			Ft	540
Porous Granular Embankment (Special)			Cu. Yd.	61
Concrete Sealer			Sq. Ft.	150



**PILE DATA**  
 Type: Metal Shell Pile 12" dia x 0.179 in. walls  
 Nominal Required Bearing: 240 kips  
 Allowable Resistance Available: 80 kips  
 Est. Length: 30'  
 No. Required: 18

1. Expose and demolish the existing roofing as required in order to drive the piles. Cost included with "Driving Piles".
2. For details of Bar Splices See Sheet 16 of 19
3. Hatched area to be poured after Superstructure falsework has been removed. Quantity of concrete included with Concrete Superstructure.
4. Space reinforcement in cap to miss anchor bolts.
5. Pour steps monolithically with cap.
6. Quantity of concrete in end post included with Concrete Superstructure on Sheet 6 of 19.
7. For North Wingwall Details and Section thru Abut. see Sheet 12 of 19.  
For South Wingwall Details see Sheet 13 of 19.
8. Bars indicated thus 1x2-#5 etc indicates 1 line of bars with 2 lengths per line.

REVISIONS	
NAME	DATE

ILLINOIS DEPARTMENT OF TRANSPORTATION  
**WEST ABUTMENT DETAILS**  
 IL ROUTE 10 OVER CAMP CREEK  
 FAS RTE. 1513 SECTION 5BR-1  
 STA. 16+69.00  
 CHAMPAIGN COUNTY STR. 010-0275  
 SCALE: N.T.S. DRAWN BY LP  
 DATE MAY 2007 CHECKED BY MJS

TUC PROJ. 3106676-02 11:52 AM  
 PLOT DATE: 5/29/07 11:52 AM  
 FILE NAME: A:\PROJECTS\1513\5BR-1\5BR-1.dwg  
 PLOTTER: HP DesignJet 2400