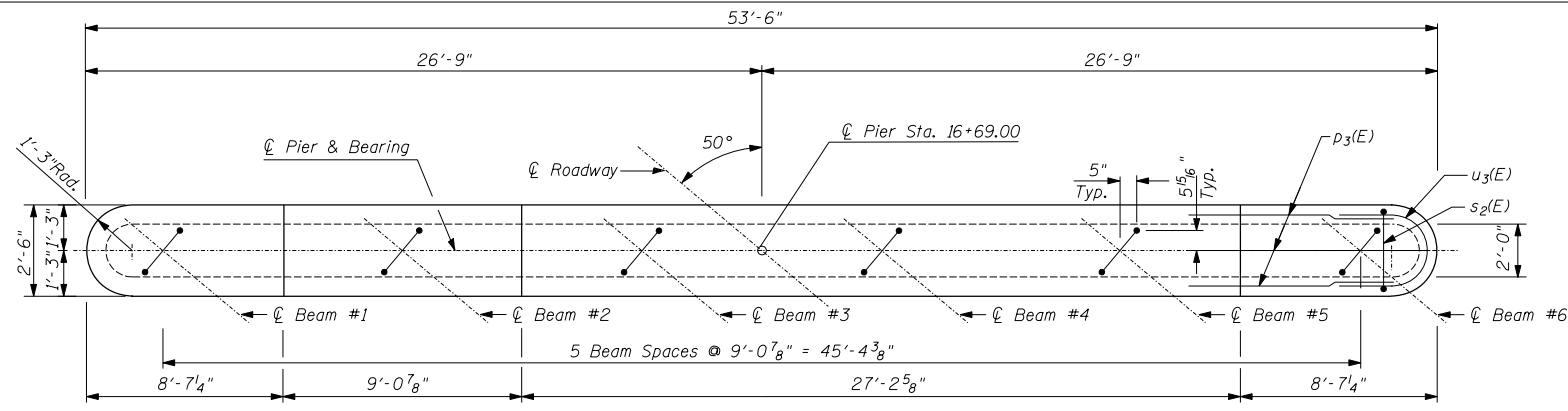


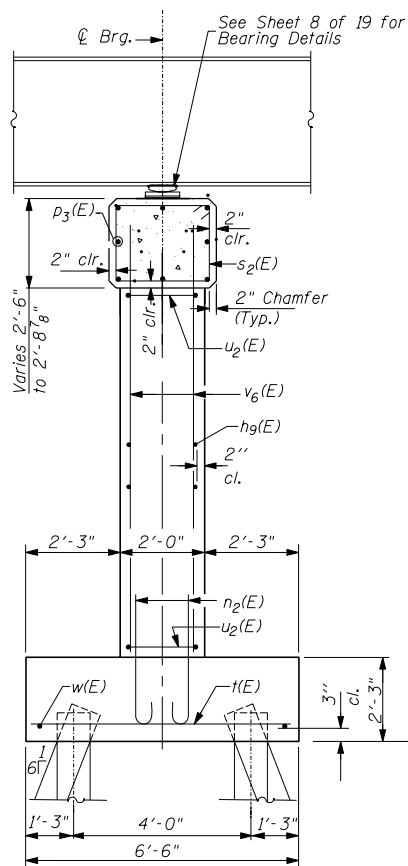
F.A.S. RTE.	SECTION	COUNTY	TOTAL SHEETS	SHEET NO.
1513	5BR-1	CHAMPAIGN	38	25
STA.		TO STA.		
FED. ROAD DIST. NO. 5		ILLINOIS FED. AID PROJECT		



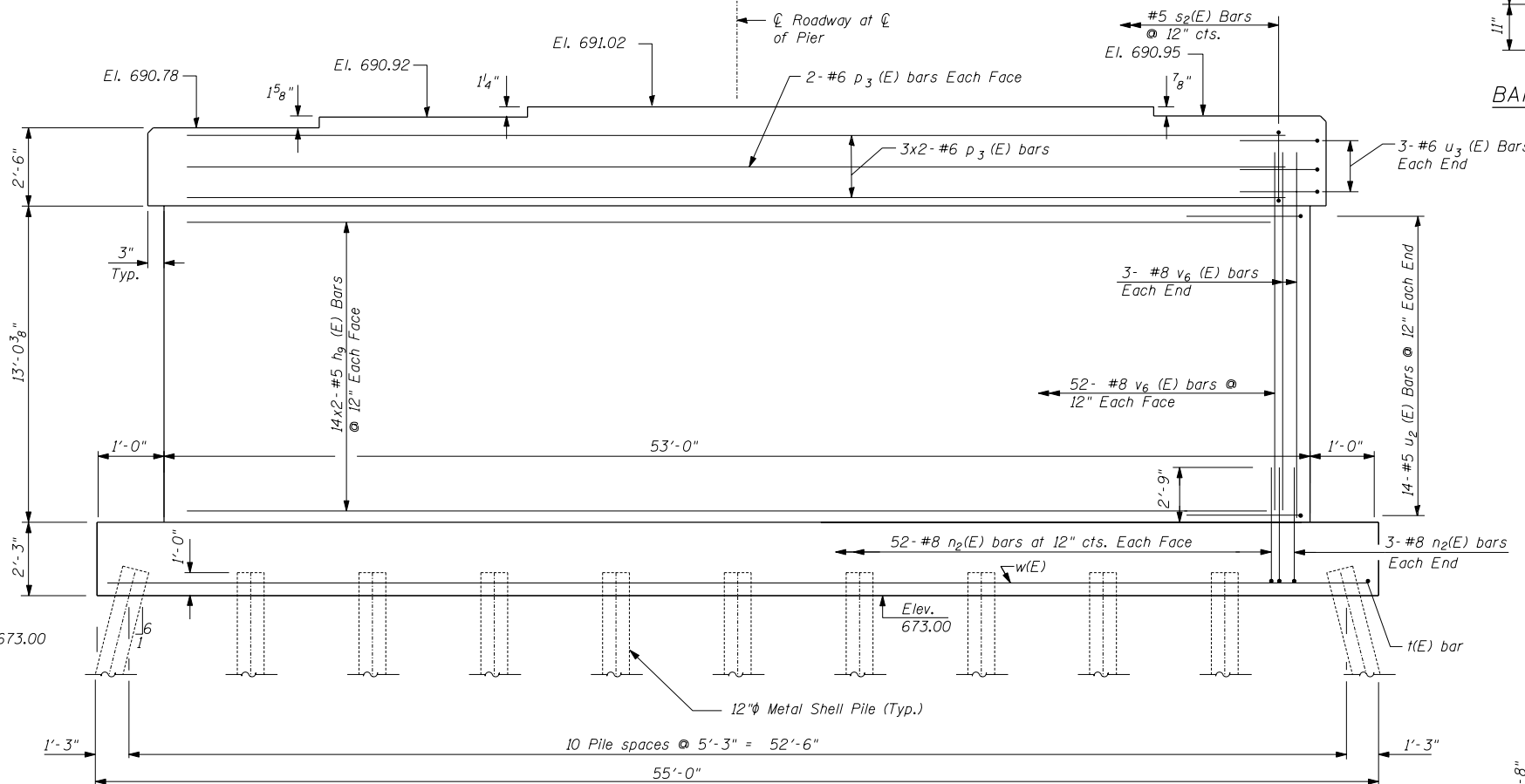
TOP PLAN

PILE DATA

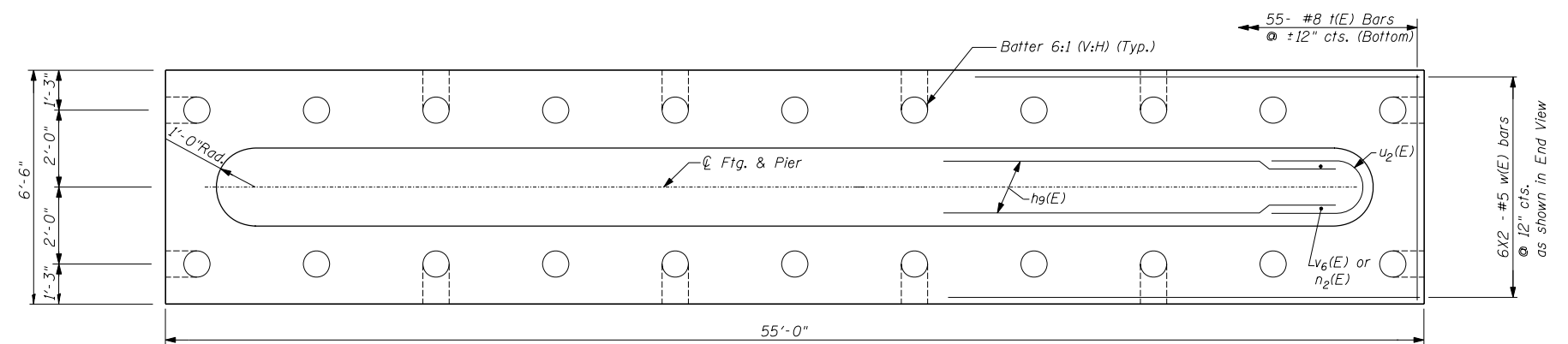
Type	Metal Shell - 12" dia. x 0.250" Walls w/ pile shoes
No. Required	21+1 Test Pile
Nominal Required Bearing	300 Kips
Allowable Resistance Available	80 Kips
Est. Length	40 Ft.



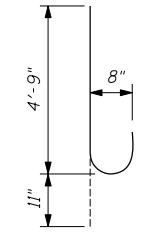
END VIEW



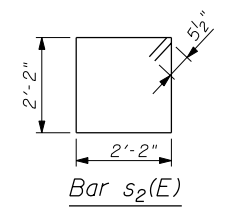
ELEVATION
(Looking East)



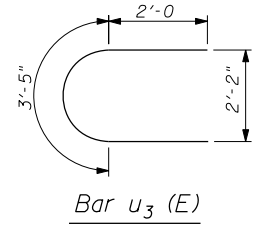
FOOTING PLAN



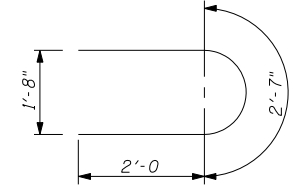
BAR n₂(E)



Bar s₂(E)



Bar u₃(E)



BAR u₂(E)

BILL OF MATERIAL

Bar	No.	Size	Length	Shape
h ₉ (E)	56	#5	26'-4"	—
n ₂ (E)	110	#8	5'-8"	U
p ₃ (E)	16	#6	27'-7"	—
s ₂ (E)	52	#5	9'-7"	□
t(E)	55	#8	6'-0"	—
u ₂ (E)	28	#5	6'-7"	U
u ₃ (E)	6	#6	7'-5"	U
v ₆ (E)	110	#8	15'-2"	—
w(E)	12	#5	28'-2"	—
Cofferdam Excavation		Cu. Yd.	127	
Concrete Structures		Cu. Yd.	93.7	
Reinforcement Bars, Epoxy Coated		Lbs.	10335	
Furnishing Metal, Shell Piles, 12"x0.250"		Ft.	840	
Driving Piles		Ft.	840	
Test Pile Metal Shells		Each	1	
Pile Shoes		Each	22	

The Metal Shell Piles shall be according ASTM A 252 Grade 3.

Space reinforcement in cap to miss anchor bolts.

Pour steps monolithically with cap.

Bars indicated thus 14x2-#5 h₉(E) indicates 14 lines of bars with 2 lengths per line.

For Cofferdam Detail. See Sheet 2 of 19.

MIN. BAR LAP

- #5 1'-8"
- #6 2'-0"

REVISIONS

NAME	DATE

ILLINOIS DEPARTMENT OF TRANSPORTATION
PIER DETAILS
 IL ROUTE 10 OVER CAMP CREEK
 FAS RTE. 1513 SECTION 5BR-1
 STA. 16+69.00
 CHAMPAIGN COUNTY STR. 010-0275
 SCALE: N.T.S. DRAWN BY LP
 DATE MAY 2007 CHECKED BY MJS

TUG PROJ. # 3106078-02
 PLOT DATE = 7/19/2007 4:06:55 PM
 FILE NAME = p:\1007\dist\1513\Camp Creek Revised.MD 2\CADD\pier.dwg