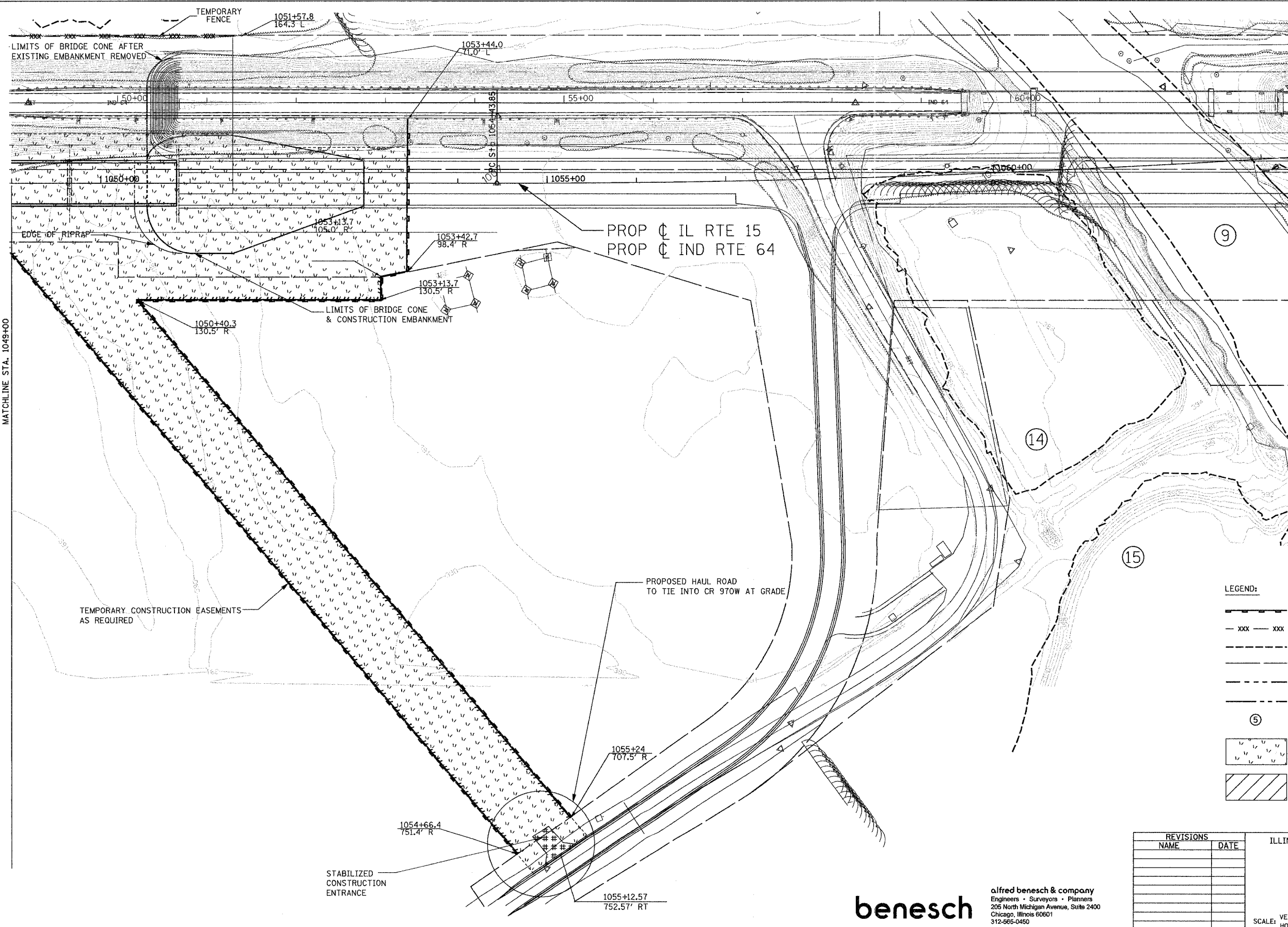
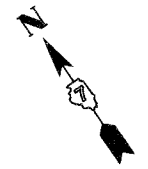


| F.A.P. RTE. | SECTION | COUNTY | TOTAL SHEETS | SHEET NO. |
|---------------------|-------------|---------------------------|--------------|-----------|
| 827 | 12Z-3, 12BR | WABASH, IL GIBSON, IN | 158 | 10 |
| STA. | | TO STA. | | |
| FED. ROAD DIST. NO. | | ILLINOIS FED. AID PROJECT | | |



MATCHLINE STA. 1049+00

PROP C IL RTE 15
PROP C IND RTE 64

NOTE: PERIMETER EROSION BARRIER TO BE PLACED AS SHOWN OR AS DIRECTED BY RESIDENT ENGINEER.

NOTE: TEMPORARY SEEDING TO BE APPROVED BY RESIDENT ENGINEER PRIOR TO INSTALLATION.

- LEGEND:**
- PERIMETER EROSION BARRIER
 - TEMPORARY FENCE
 - WETLAND LIMITS
 - EXISTING R.O.W.
 - PERMANENT EASEMENT
 - PROPOSED R.O.W.
 - WETLAND ID
 - TEMPORARY EROSION CONTROL SEEDING
 - TREE REMOVAL

| REVISIONS | |
|-----------|------|
| NAME | DATE |
| | |
| | |
| | |
| | |
| | |
| | |
| | |
| | |
| | |
| | |

ILLINOIS DEPARTMENT OF TRANSPORTATION

EROSION CONTROL PLAN

SCALE: VERT. DRAWN BY MAC
 HORIZ. CHECKED BY RDC
 DATE 06/15/07

benesch

alfred benesch & company
 Engineers • Surveyors • Planners
 205 North Michigan Avenue, Suite 2400
 Chicago, Illinois 60601
 312-565-0450
 Job No. 3426

8/20/2007 4:20:51 PM
 m:\projects\benesch\eroc_2\10\eroc04.dgn