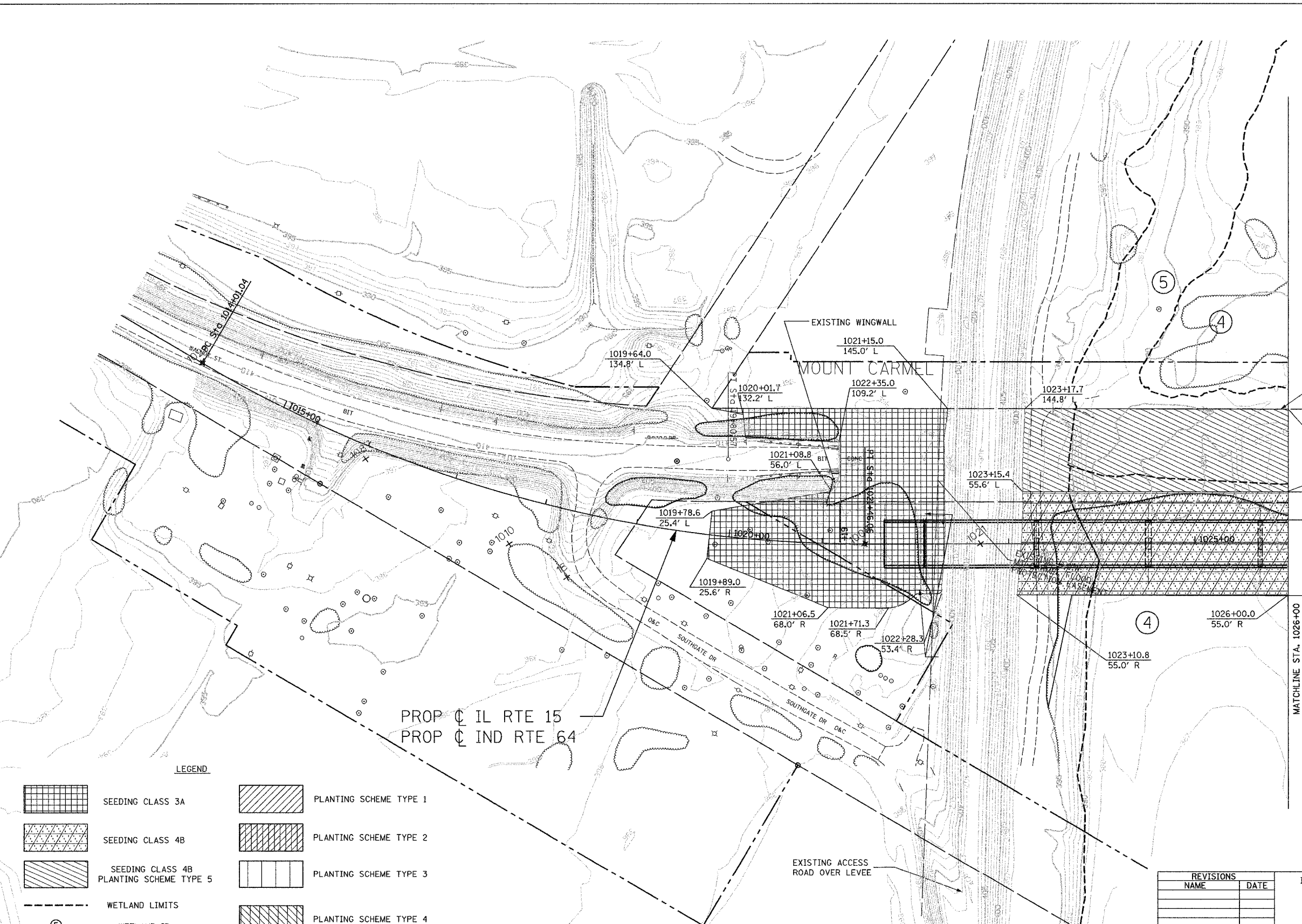
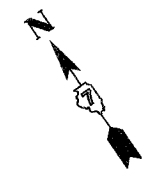


F.A.P. RTE.	SECTION	COUNTY	TOTAL SHEETS	SHEET NO.
827	12Z-3, 12BR	WABASH, IL GIBSON, IN	158	13
STA.		TO STA.		
FED. ROAD DIST. NO.	ILLINOIS	FED. AID PROJECT		



PROP CL IL RTE 15  
PROP CL IND RTE 64

EXISTING R.O.W. (TYP.)

88'  
1026+00  
144.3' L  
30'  
1026+00  
55.0' L  
81'

NOTE: PERMANENT SEEDING AND TREE PLANTING TO BE PLACED AS SHOWN OR AS DIRECTED AND APPROVED BY THE RESIDENT ENGINEER

MATCHLINE STA. 1026+00

LEGEND

- |  |                    |  |                        |
|--|--------------------|--|------------------------|
|  | SEEDING CLASS 3A   |  | PLANTING SCHEME TYPE 1 |
|  | SEEDING CLASS 4B   |  | PLANTING SCHEME TYPE 2 |
|  | SEEDING CLASS 4B   |  | PLANTING SCHEME TYPE 3 |
|  | WETLAND LIMITS     |  | PLANTING SCHEME TYPE 4 |
|  | WETLAND ID         |  |                        |
|  | EXISTING R.O.W.    |  |                        |
|  | PERMANENT EASEMENT |  | PROPOSED R.O.W.        |

EXISTING ACCESS ROAD OVER LEVEE

benesch

alfred benesch & company  
Engineers • Surveyors • Planners  
205 North Michigan Avenue, Suite 2400  
Chicago, Illinois 60601  
312-565-0450  
Job No. 3426

REVISIONS	
NAME	DATE

ILLINOIS DEPARTMENT OF TRANSPORTATION

**GRADING AND LANDSCAPE PLAN**

SCALE: VERT.  
HORIZ.  
DATE 06/15/07

DRAWN BY MAC  
CHECKED BY RDC