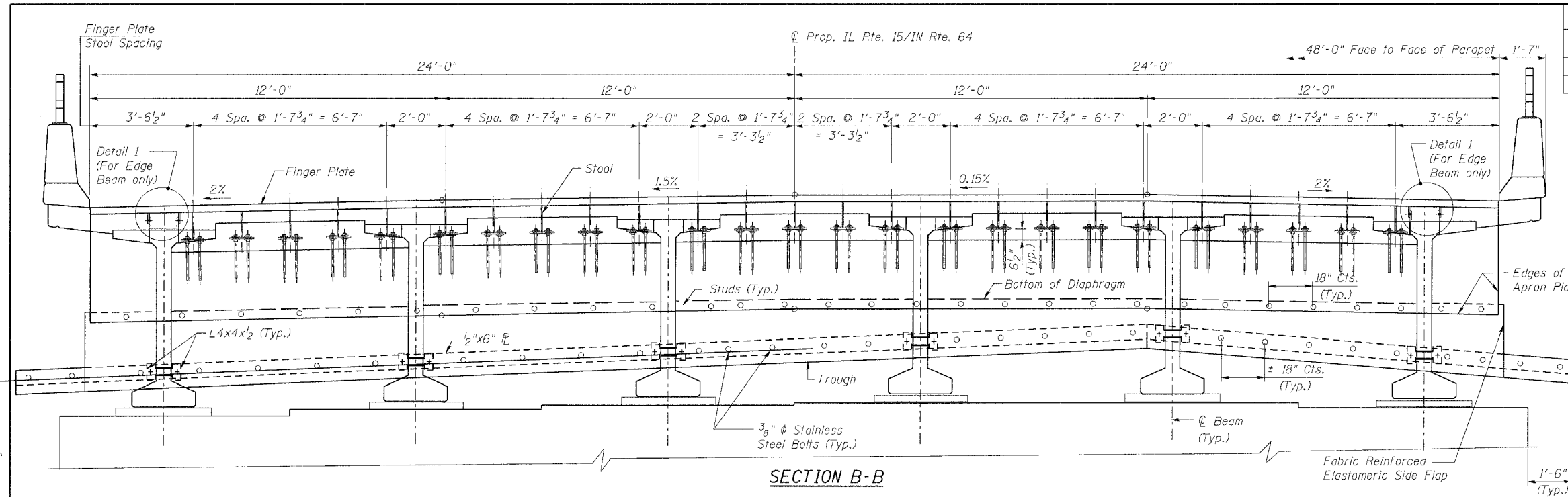
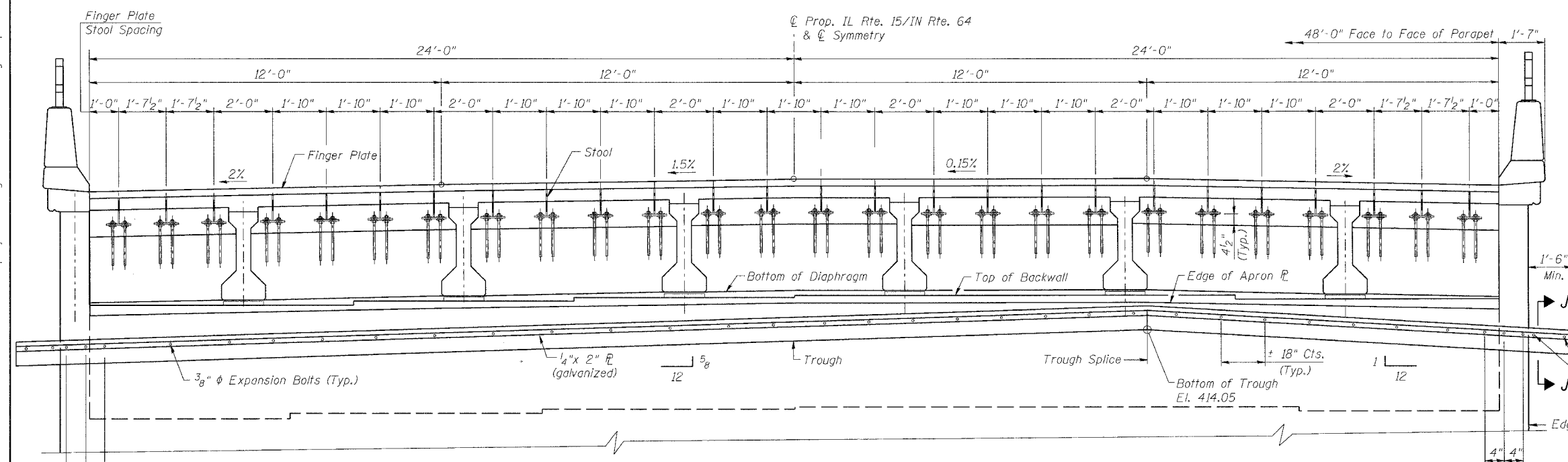


ROUTE No.	SECTION	COUNTY	TOTAL SHEETS	SHEET NO.
F.A.P. 827	12Z-3, 12BR	WABASH, IL GIBSON, IN	158	54
STA.		TO STA.		
F.H.W.A. REGION		ILLINOIS	PROJECT	

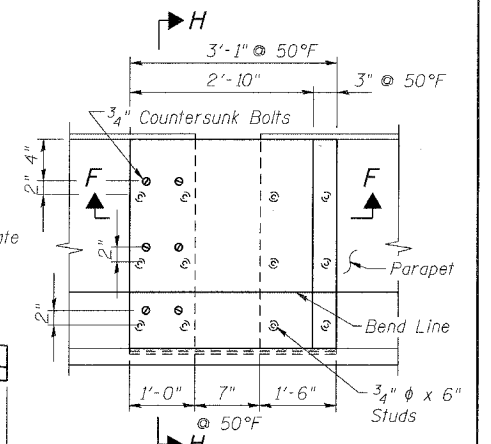
BRIDGE SHEET S38 OF S114 CONTRACT 94450



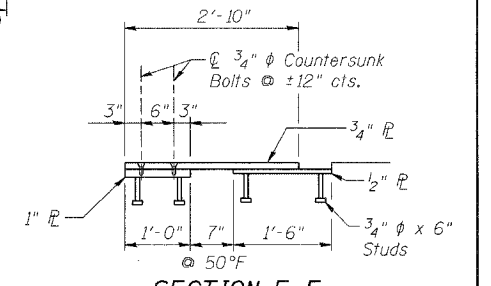
SECTION B-B



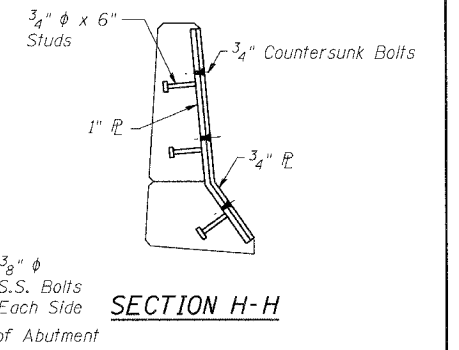
SECTION C-C



SECTION E-E



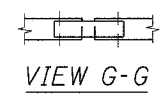
SECTION F-F



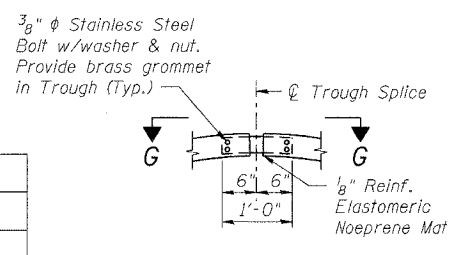
SECTION H-H

NOTES:

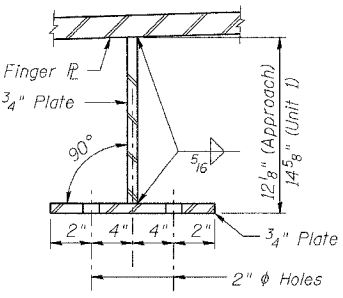
1. Work this sheet with sheet S37.
2. For Detail 1, see sheet S42.
3. For Finger Plate and Parapet Plate painting schematics, see sheet S42.



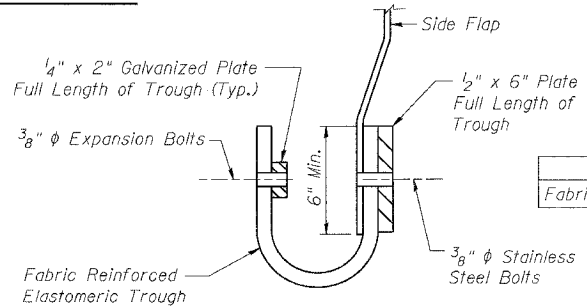
VIEW G-G



TROUGH SPLICE DETAIL



FINGER PLATE STOOL DETAIL



SECTION J-J

BILL OF MATERIAL

ITEM	UNIT	QUANTITY
Fabric Reinforced Elastomeric Trough	FOOT	52.2

benesch

alfred benesch & company  
Engineers - Surveyors - Planners  
206 North Michigan Avenue, Suite 2400  
Chicago, Illinois 60601  
312-565-5450  
Job No. 3426

ILLINOIS DEPARTMENT OF TRANSPORTATION  
IL ROUTE 15/IN ROUTE 64  
OVER WABASH RIVER PUBLIC WATERS  
FAP 827 SECT 12Z-3, 12BR

FINGER PLATE EXPANSION JOINT  
WEST ABUTMENT

SN: 093-0021 (IL)/9502700 (IN) STA. 1036+27  
WABASH CO., IL. DATE: JUNE 15, 2007

m:\proj\3426\stage\_2\structures\design\super\sej\jdt008.dgn 1:00:18 PM 6/26/2007