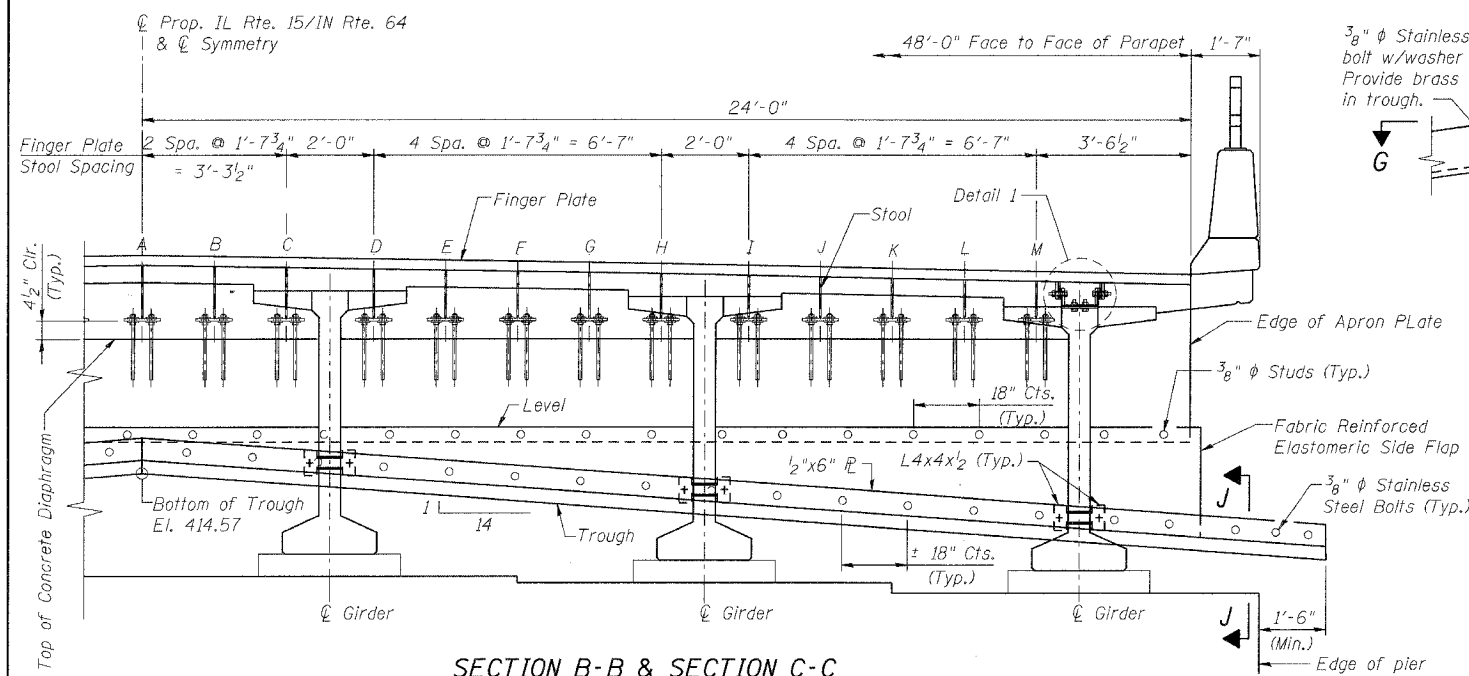
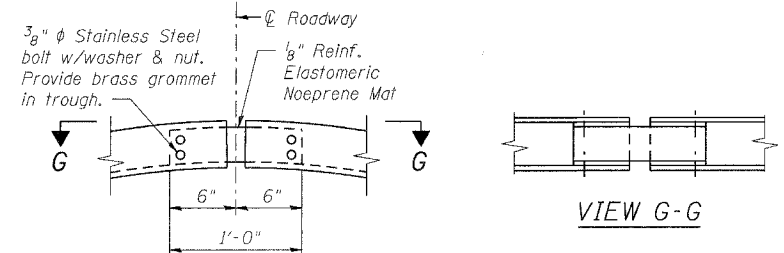


ROUTE No.	SECTION	COUNTY	TOTAL SHEETS	SHEET NO.
F.A.P. 827	12Z-3, 12BR	WABASH, IL GIBSON, IN	158	58
STA.		TO STA.		
F.H.W.A. REGION		ILLINOIS	PROJECT	

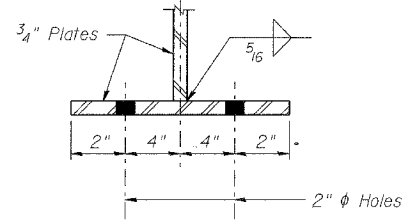
BRIDGE SHEET S42 OF S114 CONTRACT 94450



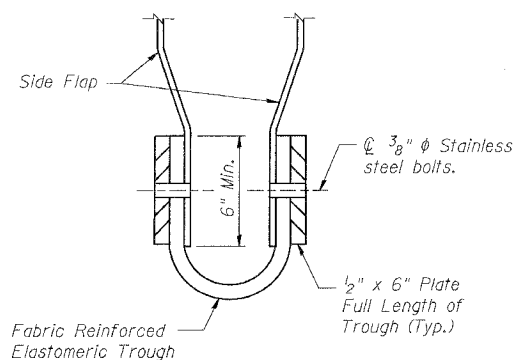
SECTION B-B & SECTION C-C



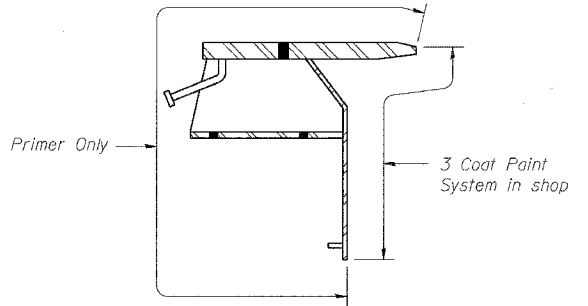
TROUGH SPLICE DETAIL



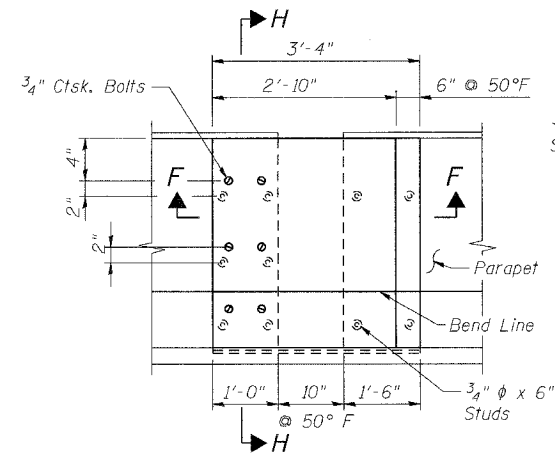
FINGER PLATE STOOL DETAIL



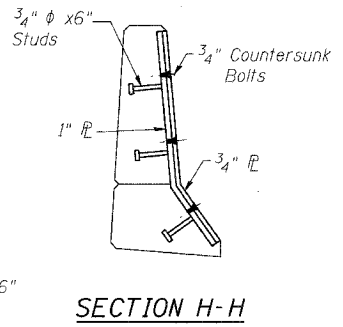
SECTION J-J



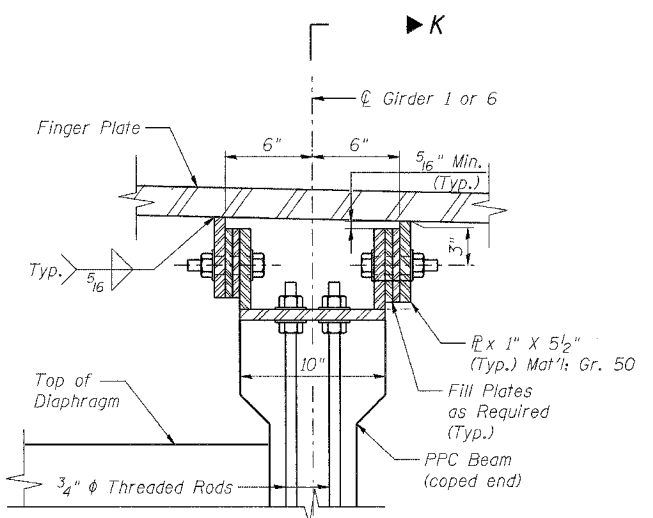
FINGER PLATE PAINT SCHEMATIC



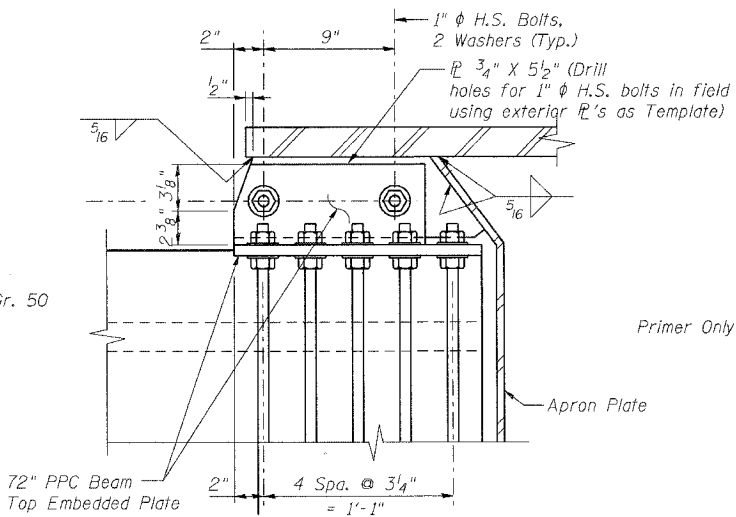
SECTION E-E



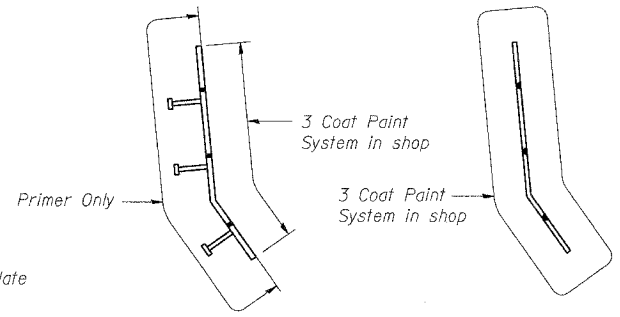
SECTION H-H



DETAIL 1 (For Fascia Beams Only)



SECTION K-K



PARAPET PLATE PAINT SCHEMATIC

NOTE:
1. Work this sheet with sheet S41.

NOTE:
Stool heights and spacing are symmetrical about ϕ Prop. IL Rte. 15/IN Rte.-64.

STOOL HEIGHTS (IN)

	A	B	C	D	E	F	G	H	I	J	K	L	M
SECTION B-B	16 7/8	16 5/8	16 3/8	16	15 5/8	15 3/8	15 1/8	14 6/8	14 3/8	13 7/8	13 4/8	13 1/8	12 6/8
	A	B	C	D	E	F	G	H	I	J	K	L	M
SECTION C-C	16 7/8	16 5/8	16 3/8	16	15 5/8	15 3/8	15 1/8	14 6/8	14 3/8	13 7/8	13 4/8	13 1/8	12 6/8

BILL OF MATERIAL

ITEM	UNIT	QUANTITY
Fabric Reinforced Elastomeric Trough	FOOT	52.2

ILLINOIS DEPARTMENT OF TRANSPORTATION
IL ROUTE 15/IN ROUTE 64
OVER WABASH RIVER PUBLIC WATERS
FAP 827 SECT 12Z-3, 12BR
FINGER PLATE EXPANSION JOINT
PIER 13

benesch

alfred benesch & company
Engineers • Surveyors • Planners
205 North Michigan Avenue, Suite 2400
Chicago, Illinois 60601
312-555-0450
Job No. 3426

SN: 093-0021 (IL)/9502700 (IN) STA. 1036+27
WABASH CO., IL. DATE: JUNE 15, 2007

m:\pro\3426\stage_2\structures\design\super\sejdt004.dgn 10:00:28 PM 6/26/2007