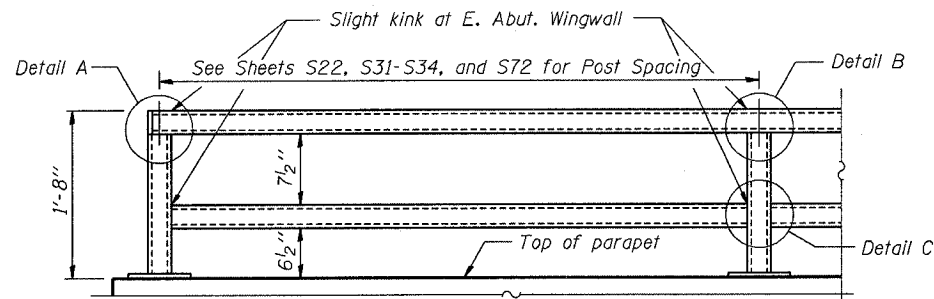
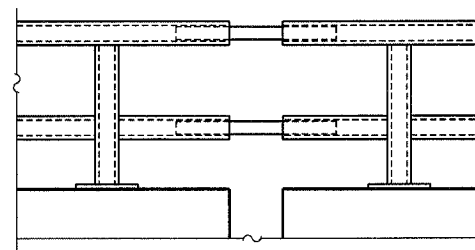


ROUTE No.	SECTION	COUNTY	TOTAL SHEETS	SHEET NO.
F.A.P. 827	12Z-3, 12BR	WABASH, IL GIBSON, IN	158	61
STA.		TO STA.		
F.H.W.A. REGION		ILLINOIS	PROJECT	

BRIDGE SHEET S45 OF S114 CONTRACT 94450



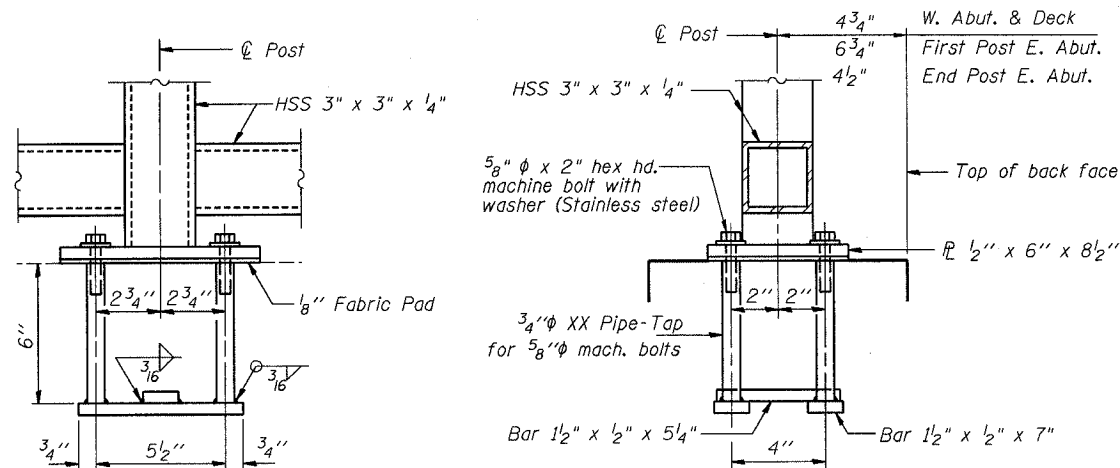
**PARAPET RAILING  
ELEVATION**  
(Inside Face of Two Element Rail)



**PARAPET RAILING  
ELEVATION AT EXPANSION JOINT**

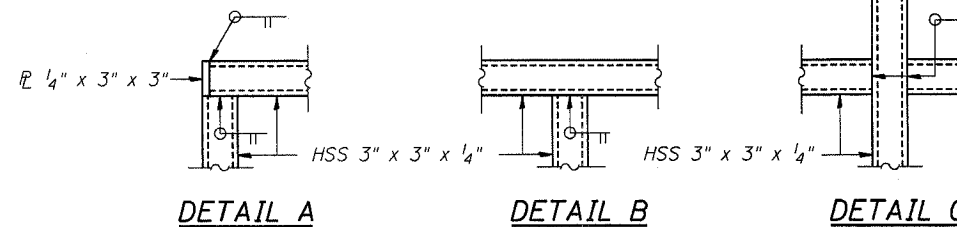
**NOTES:**

1. Railing shall be according to Section 509 of the Standard Specifications, except as noted, and will be paid for at the Contract Unit Price per foot for Parapet Railing.
2. Hollow structural sections shall conform to the requirements of ASTM designation A 500, Grade B, structural steel tubing.
3. All other steel shapes and plates shall conform to the requirements of AASHTO M 270 Grade 36.
4. If the option of drilling and epoxy grouting the anchor rods is chosen, the Contractor shall use the capsule or the adhesive cartridge type anchor rods that have been previously tested and given a prior approval by the Department. The Contractor shall install these anchor rods in pre-drilled holes according to the manufacturer's recommendations and procedures. The capsule or the adhesive cartridge shall be sealed with premeasured amounts of the adhesive chemical.
5. Space reinforcement to miss anchor rods.
6. All posts, railing, splices, anchor devices, and bent plates shall be galvanized after shop fabrication according to AASHTO M 111 and ASTM A 385.
7. All bolts, nuts, washers, and anchor rods shall be galvanized according to AASHTO M 232 except stainless steel bolts as noted.
8. Vent holes for galvanizing shall be placed in the posts and rails at locations that will not allow the accumulation of moisture in the members.



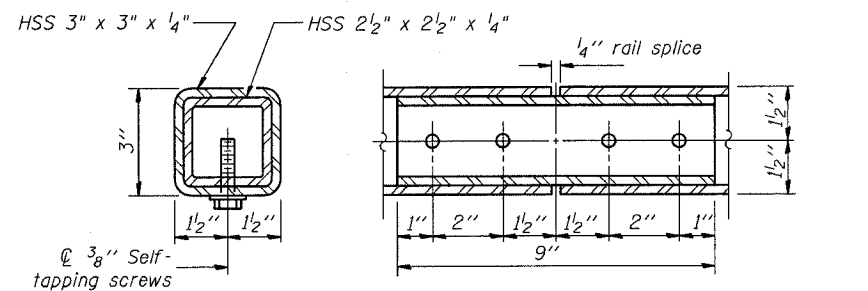
**ANCHOR BOLT DETAILS**

In lieu of the cast-in-place anchor device shown, the Contractor has the option of drilling and epoxy grouting 5/8" phi anchor rods according to Art. 509.06 of the Standard Specifications. Embedment shall be according to the manufacturer's specifications.

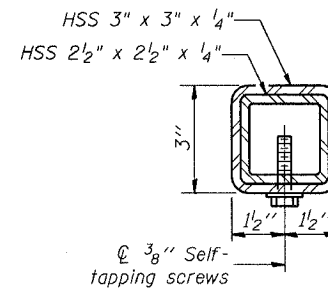


**BILL OF MATERIAL**

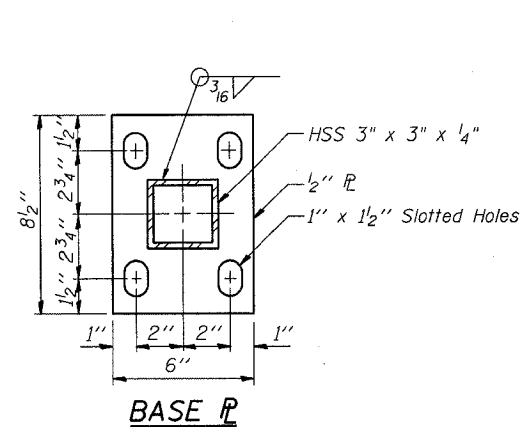
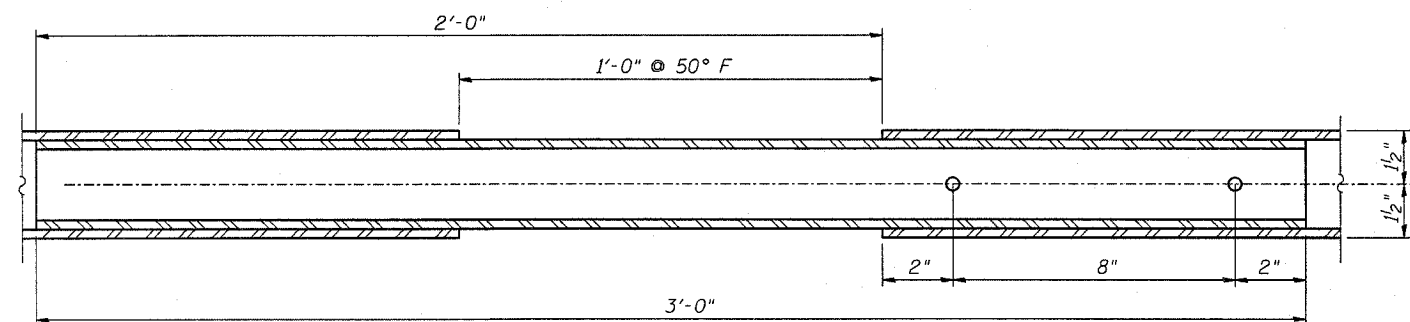
Item	Unit	Quantity
Parapet Railing	Foot	5867



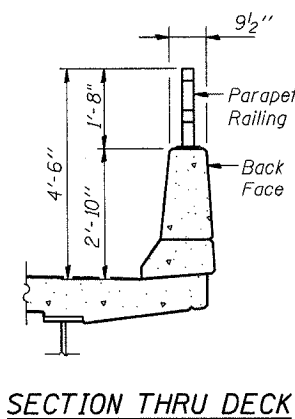
**RAIL SPLICE**



**RAIL SPLICE AT EXPANSION JOINT**



**BASE P**



**SECTION THRU DECK**

DESIGNED	WJZ
CHECKED	CDF
DRAWN	CS
CHECKED	CDF

**benesch**

alfred benesch & company  
Engineers - Surveyors - Planners  
225 North Michigan Avenue, Suite 2400  
Chicago, Illinois 60601  
312-595-0450  
Job No. 3426

ILLINOIS DEPARTMENT OF TRANSPORTATION  
IL ROUTE 15/IN ROUTE 64  
OVER WABASH RIVER PUBLIC WATERS  
FAP 827 SECT 12Z-3, 12BR  
**PARAPET RAILING DETAILS**

SN: 093-0021 (IL)/9502700 (IN)  
WABASH CO., IL.

STA. 1036+27  
DATE: JUNE 15, 2007

m:\proj3426\stage\_2\Structures\design\super\srldt001.dgn

4:39:07 PM

10/15/2007