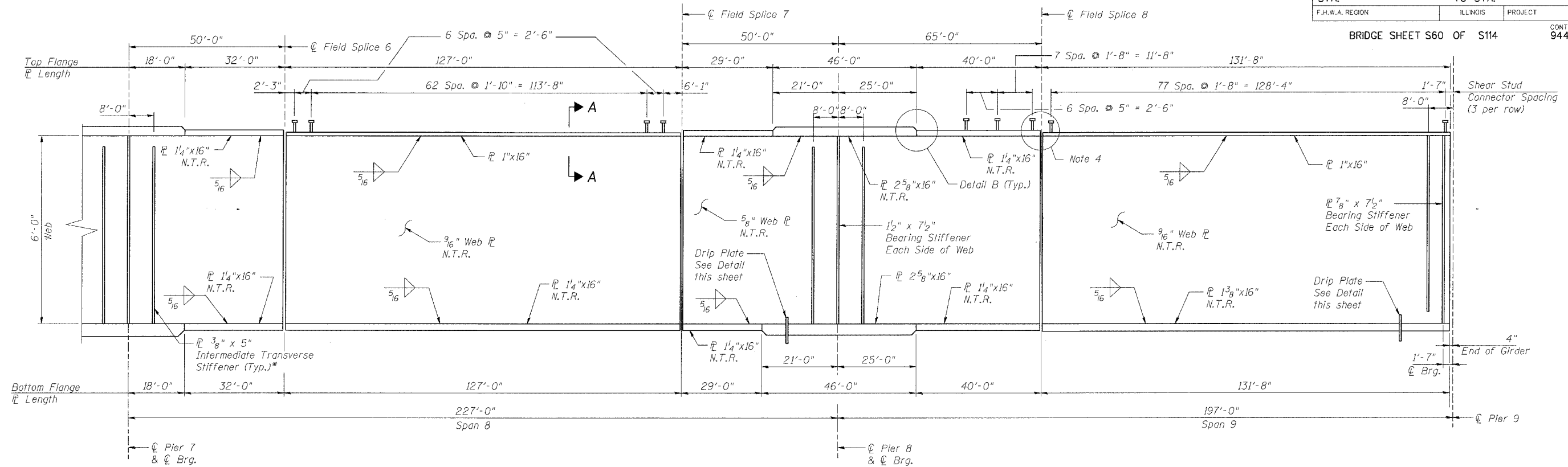


ROUTE No.	SECTION	COUNTY	TOTAL SHEETS	SHEET NO.
F.A.P. 827	12Z-3, 12BR	WABASH, IL GIBSON, IN	158	76
STA.		TO STA.		
F.H.W.A. REGION		ILLINOIS	PROJECT	

BRIDGE SHEET S60 OF S114

CONTRACT  
94450

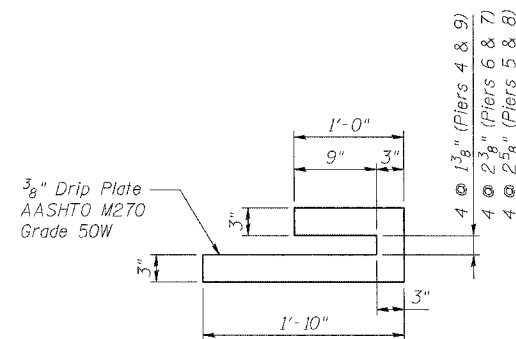


**GIRDER ELEVATION**

\* For Fascia Girders 1 & 6, provide Stiffeners on inside face.

**NOTES:**

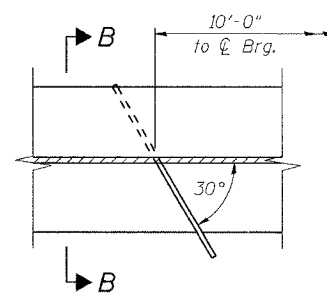
1. All flange plates shall be AASHTO M 270 Grade HPS20W steel.
2. All web plates, bearing stiffeners and intermediate stiffeners shall be AASHTO M 270 Grade 50W steel.
3. "N.T.R." denotes plates to which Notch Toughness Requirements are applicable.
4. For placement of shear studs on splice plate, see sheet S63.
5. For Section A-A & Detail B, see sheet S59.
6. Work this sheet with sheets S50, S51, S59, S61-S65.
7. See Framing Plan to locate holes for scupper pipe clamps.



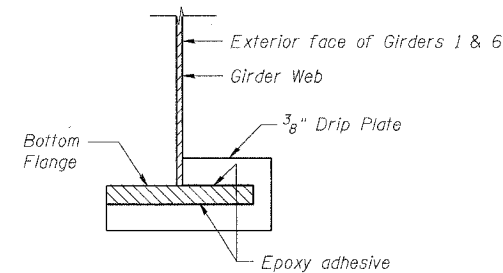
**DRIP PLATE DETAIL**

12 thus, cost included with "Furnishing and Erecting Structural Steel"

Note:  
Drip plates shall be installed on suitably prepared surfaces after shop priming, using a two component epoxy suitable for structural steel under prolonged exposure. Plates shall be painted with the paint specified for structural steel.



**PLAN - DRIP PLATE**



**SECTION B-B**

DESIGNED	PA/MRB
CHECKED	JDC/DAD
DRAWN	PRT/VH
CHECKED	JDC/MRB

**benesch**

alfred benesch & company  
Engineers - Surveyors - Planners  
205 North Michigan Avenue, Suite 2400  
Chicago, Illinois 60601  
312-569-0450  
Job No. 3426

ILLINOIS DEPARTMENT OF TRANSPORTATION  
IL ROUTE 15/IN ROUTE 64  
OVER WABASH RIVER PUBLIC WATERS  
FAP 827 SECT 12Z-3, 12BR  
STEEL PLATE GIRDER  
ELEVATION

SN: 093-0021 (IL)/9502700 (IN)  
WABASH CO., IL.

STA. 1036-27  
DATE: JUNE 15, 2007

m:\proj\3426\stage\_2\structures\design\super\sgse\002.dgn

6/26/2007 1:01:05 PM