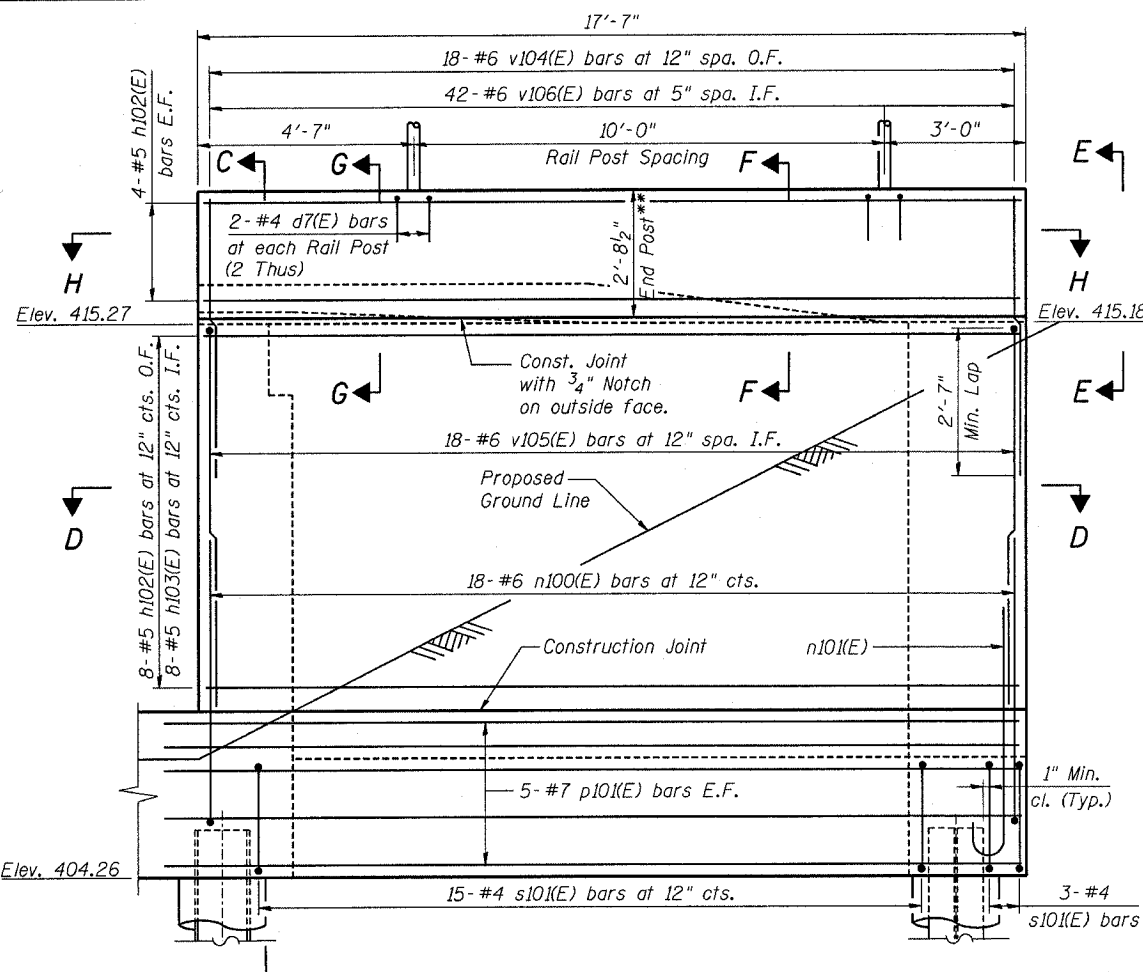


**BILL OF MATERIAL**

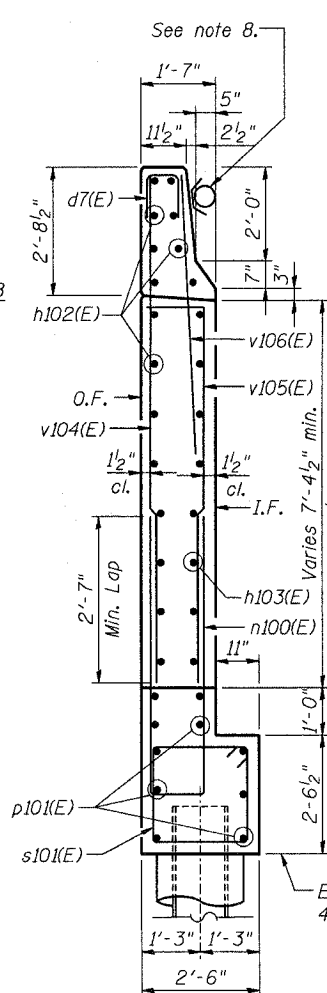
Bar	No.	Size	Length	Shape
d7(E)	8	#4	2'-0"	□
h100(E)	36	#5	26'-11"	—
h101(E)	36	#5	8'-10"	┘
h102(E)	32	#5	17'-3"	—
h103(E)	16	#5	17'-3"	┘
n100(E)	36	#6	11'-2"	┘
n101(E)	4	#6	7'-7"	┘
p100(E)	36	#8	20'-0"	—
p101(E)	20	#7	20'-5"	—
s100(E)	116	#4	14'-1"	□
s101(E)	36	#4	9'-5"	□
u100(E)	8	#6	9'-8"	┘
v100(E)	49	#7	9'-4"	—
v101(E)	49	#7	10'-11"	—
v102(E)	49	#5	2'-1"	┘
v103(E)	49	#5	4'-1"	┘
v104(E)	36	#6	10'-4"	—
v105(E)	36	#6	8'-6"	┘
v106(E)	84	#6	5'-4"	—

Pay Item	Unit	Total
Concrete Structures	Cu. Yd.	97.1
Reinf. Bars, Epoxy Coated	Pound	11100
Bar Splicers	Each	49
Furnishing Steel Piles, HP 14x117	Foot	1950
Driving Steel Piles	Foot	1950
Test Pile Steel 14x117	Each	1
Concrete Sealer	Sq. Ft.	205
Geocomposite Wall Drain	Sq. Yd.	92
Pipe Underdrain for Structures 4"	Foot	96
Porous Gran. Embank. (Special)	Cu. Yd.	154



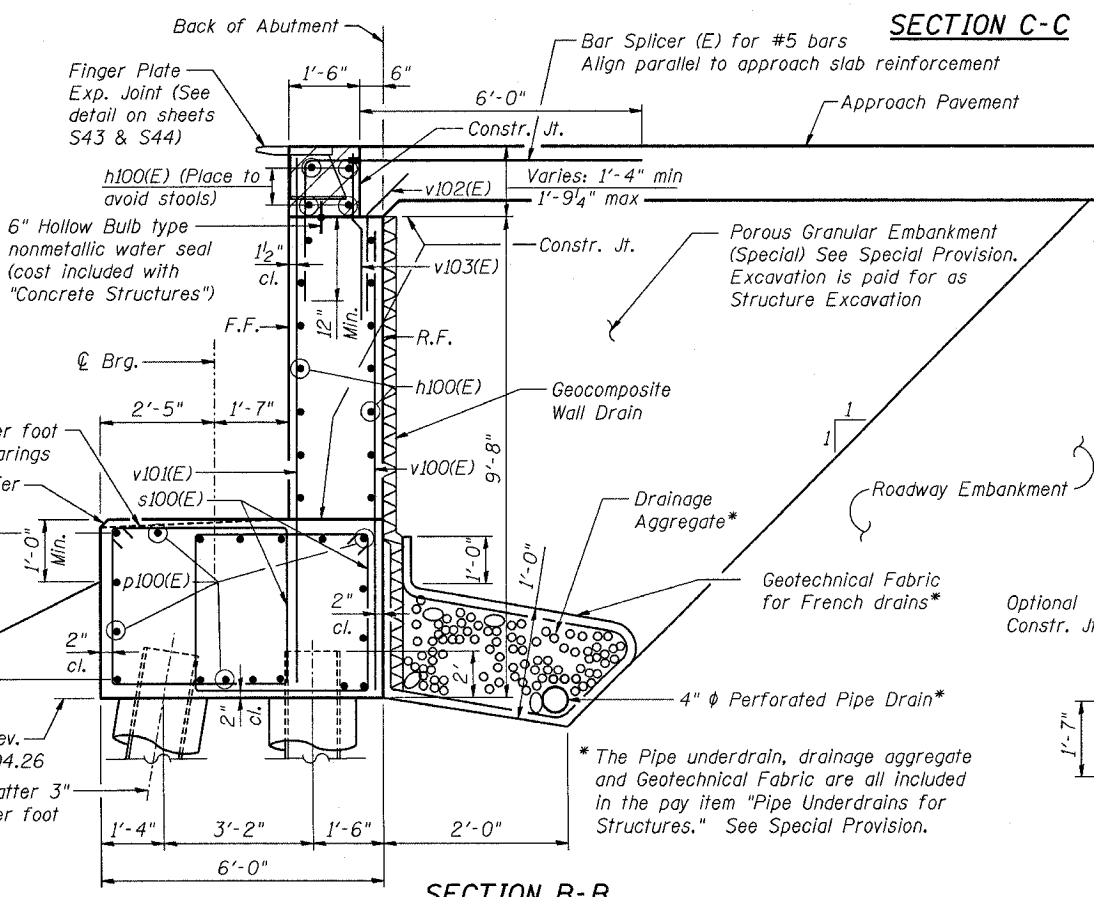
**WING WALL ELEVATION**



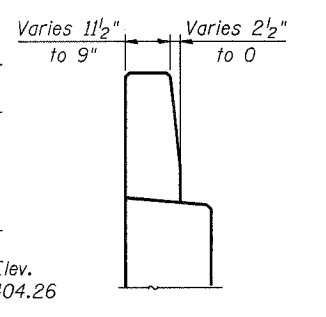
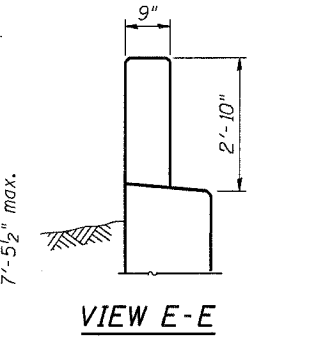
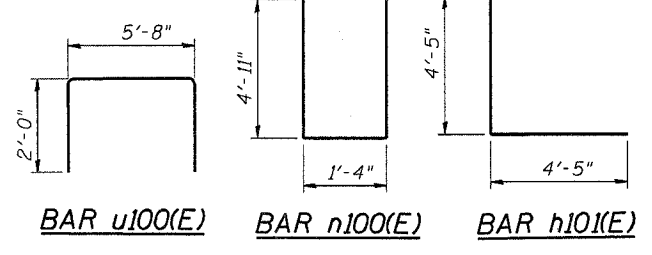
**SECTION C-C**

\*\* End Post shall be cast after The Bridge Parapet is in place. Form Top Surface to match The Parapet Grade. Quantity of concrete in the end post is included with Concrete Superstructure on Sheet S36.

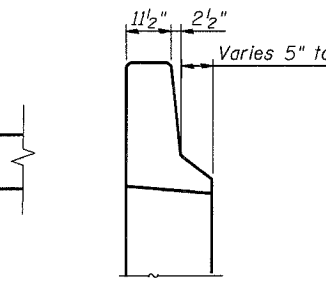
All drainage system components shall extend to 2'-0" from the end of each wingwall except an outlet pipe shall extend until intersecting with the side slopes. The pipes shall drain into concrete headwalls. (See Article 601.05 of the Standard Specifications and Highway Standard 601101)



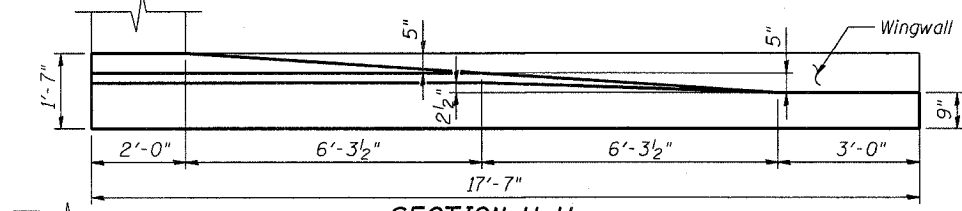
**SECTION B-B**



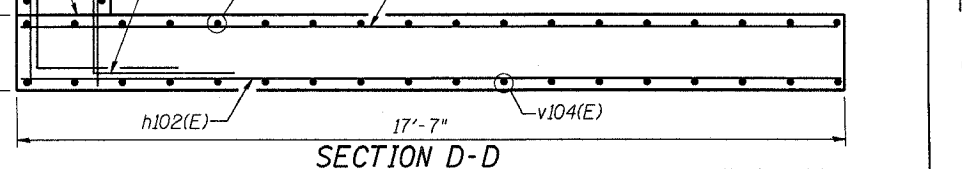
**SECTION F-F**  
(Rebars not shown for clarity)



**SECTION G-G**  
(Rebars not shown for clarity)



**SECTION H-H**  
(Rebars not shown for clarity)



**SECTION D-D**

- NOTES:**
1. Reinforcement bars Designated (E) shall be epoxy coated.
  2. Work this sheet with Sheet S71.
  3. Pour steps monolithically with Pile Bent.
  4. E.F. denotes Each Face  
I.F. denotes Inside Face  
O.F. denotes Outside Face  
F.F. denotes Front Face  
R.F. denotes Rear Face
  5. Space reinforcement in Pile Bent to miss anchor bolts.
  6. For Bar Splicer Details, see Sheet S89.
  7. For Railing details, see sheet S45.
  8. For Barrier Wall Markers, see IDOT Standards 635001, 635006-02, and 635011-01.

DESIGNED	WJZ
CHECKED	YS
DRAWN	WJZ
CHECKED	YS

ILLINOIS DEPARTMENT OF TRANSPORTATION  
IL ROUTE 15/IN ROUTE 64  
OVER WABASH RIVER PUBLIC WATERS  
FAP 827 SECT 12Z-3, 12BR  
**EAST ABUTMENT  
SECTIONS AND DETAILS**  
SN: 093-0021 (IL)/9502700 (IN) STA. 1036+27  
WABASH CO., IL. DATE: JUNE 15, 2007

**benesch**  
alfred benesch & company  
Engineers • Surveyors • Planners  
205 North Michigan Avenue, Suite 2400  
Chicago, Illinois 60601  
312-565-0450  
Job No. 3428

m:\proj\3426\stage\_2\structures\design\sub\sabdt004.dgn 4:43:16 PM 10/10/2007