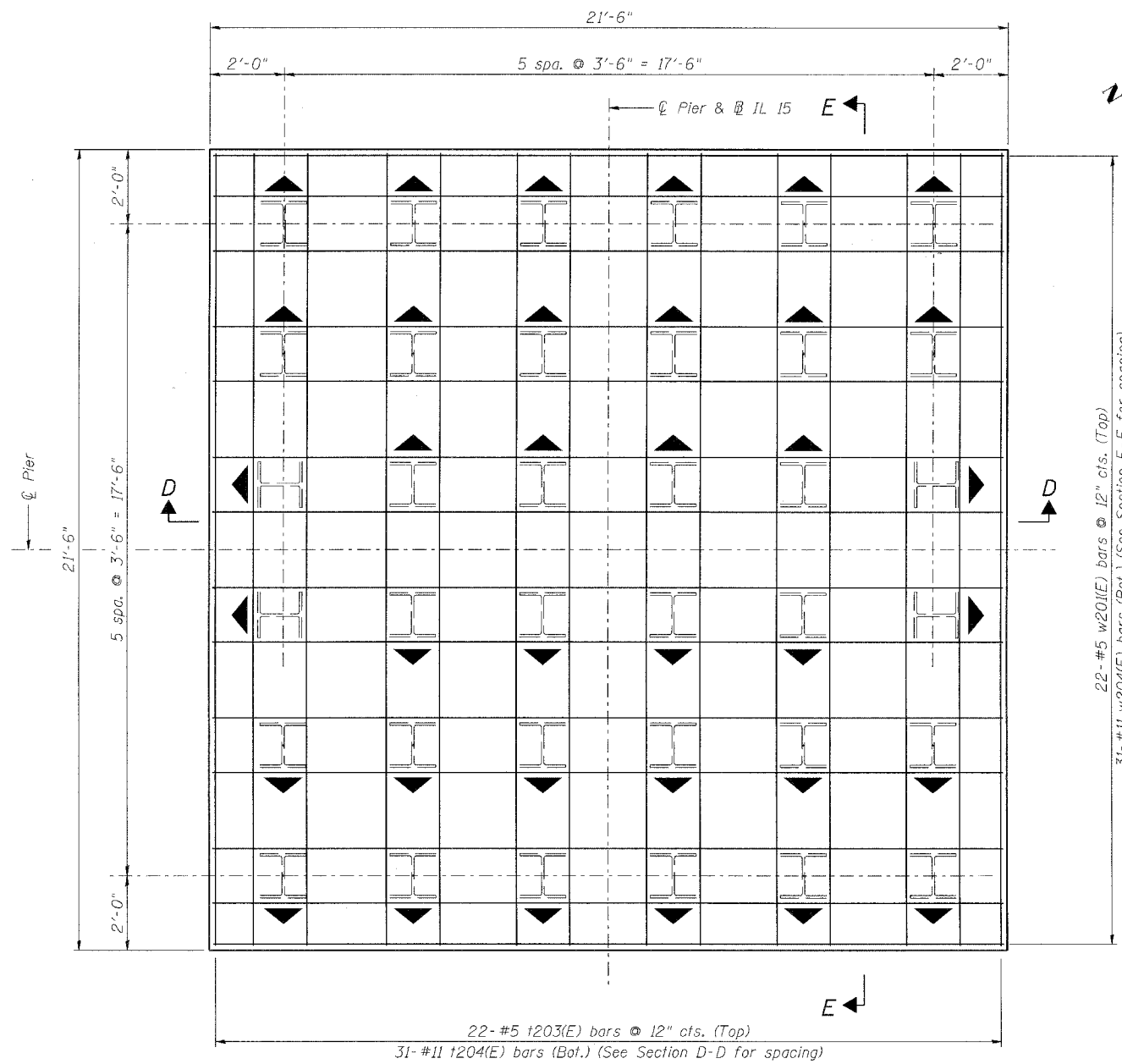


ROUTE No.	SECTION	COUNTY	TOTAL SHEETS	SHEET NO.
F.A.P. 827	12Z-3, 12BR	WABASH, IL GIBSON, IN	158	93
STA.		TO STA.		
F.H.W.A. REGION		ILLINOIS	PROJECT	

BRIDGE SHEET S77 OF S114

CONTRACT
94450



FOOTING PLAN

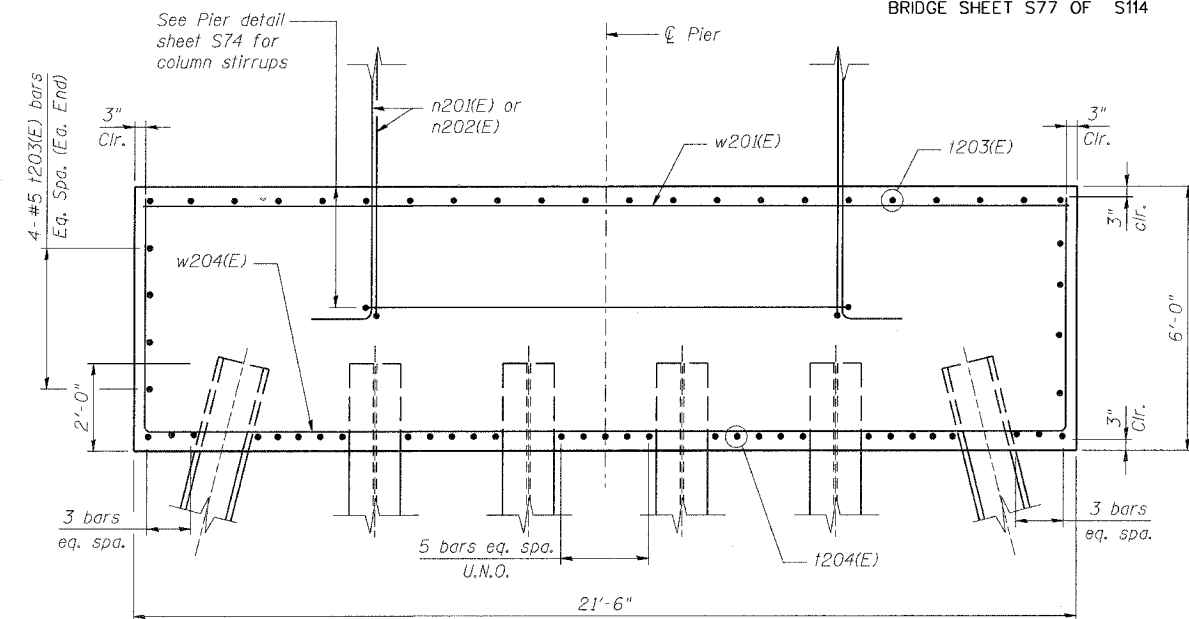
PILE DATA

	Pier 2	Pier 11	Pier 16	Pier 17
Type	HP 14x117 w/ pile shoes	HP 14x117	HP 14x117 w/ pile shoes	HP 14x117 w/ pile shoes
Nominal Required Bearing	930 kips	930 kips	930 kips	930 kips
Allowable Resistance Available	310 kips	310 kips	310 kips	310 kips
Estimated Vertical Length	25 ft	70 ft	112 ft	115 ft
No. Production Piles	35	35	36	36
No. Test Piles	1	1	0	0
Negative Skin Friction Allowance	7 kips/Pile	-	3 kips/Pile	5 kips/Pile
Minimum Pile Tip Elevation	-	-	-	-

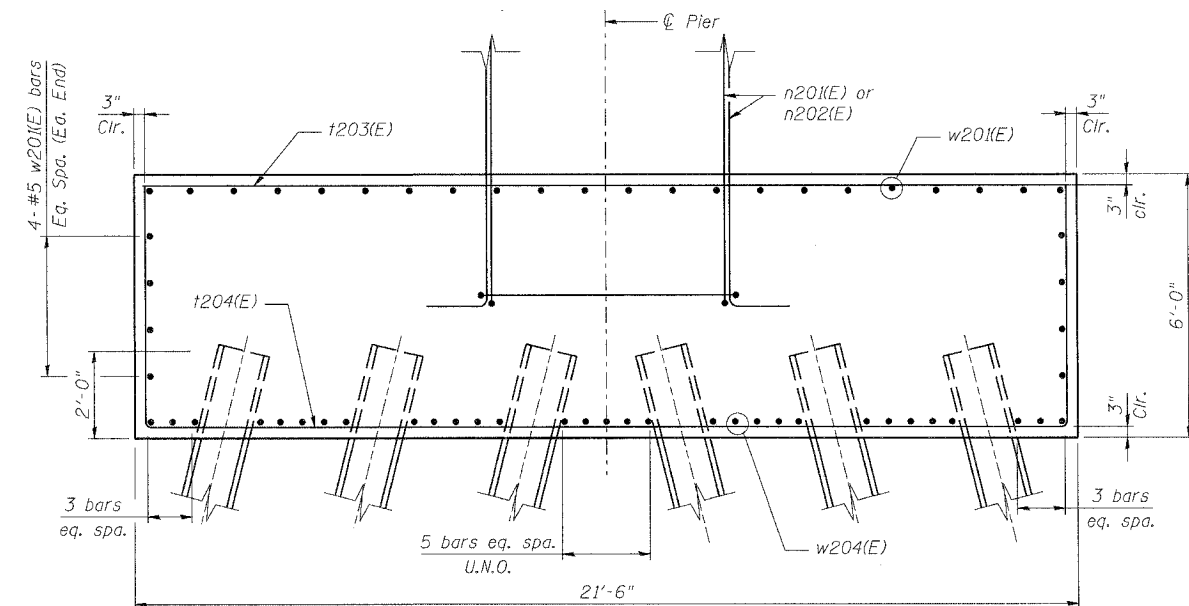
DESIGNED	CDF
CHECKED	YS/HMA
DRAWN	RMG
CHECKED	CDF

NOTES:

1. Denotes battered pile (3H : 12V)
2. For Pier Plan and Elevations, See sheets S73-S75.
3. For Reinforcement Bar Bending Details, See sheet S80.
4. For Bill of Materials, See Sheets S81-S85.



SECTION D-D



SECTION E-E

benesch

alfred benesch & company
Engineers - Surveyors - Planners
205 North Michigan Avenue, Suite 2400
Chicago, Illinois 60601
312-565-0450
Job No. 3426

ILLINOIS DEPARTMENT OF TRANSPORTATION
IL ROUTE 15/IN ROUTE 64
OVER WABASH RIVER PUBLIC WATERS
FAP 827 SECT 12Z-3, 12BR

PIERS 2, 11, 16, & 17
FOOTING DETAILS

SN: 093-0021 (IL)/9502700 (IN)
WABASH CO., IL

STA. 1036+27
DATE: JUNE 15, 2007