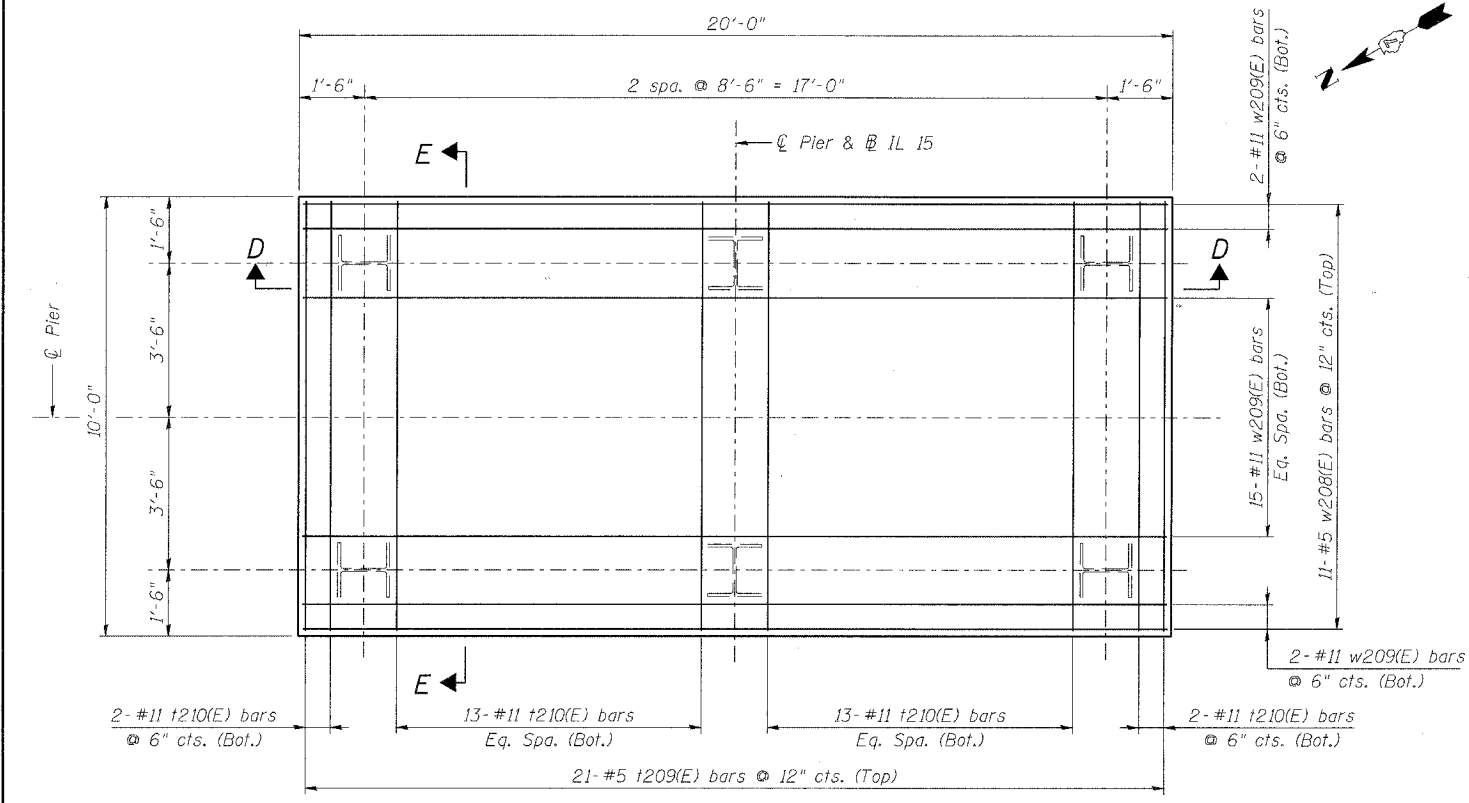
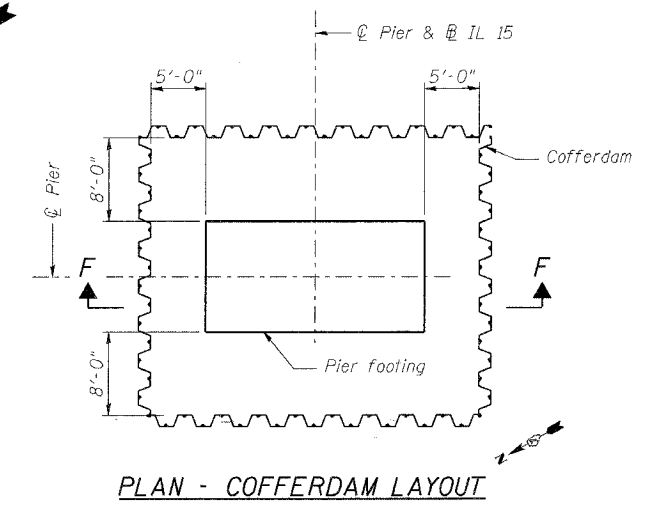


ROUTE No.	SECTION	COUNTY	TOTAL SHEETS	SHEET NO.
F.A.P. 827	12Z-3, 12BR	WABASH, IL GIBSON, IN	158	95
STA.		TO STA.		
F.H.W.A. REGION		ILLINOIS	PROJECT	CONTRACT

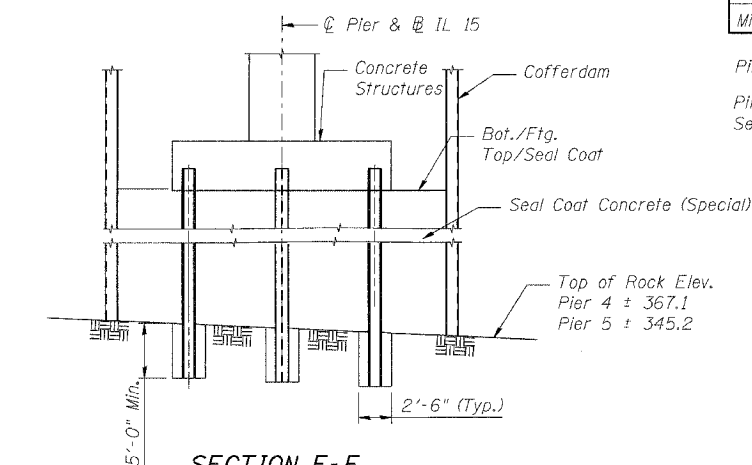
BRIDGE SHEET S79 OF S114 CONTRACT 94450



FOOTING PLAN



PLAN - COFFERDAM LAYOUT



SECTION F-F

\*See Special Provision "Piers 4 & 5 Foundation Construction"

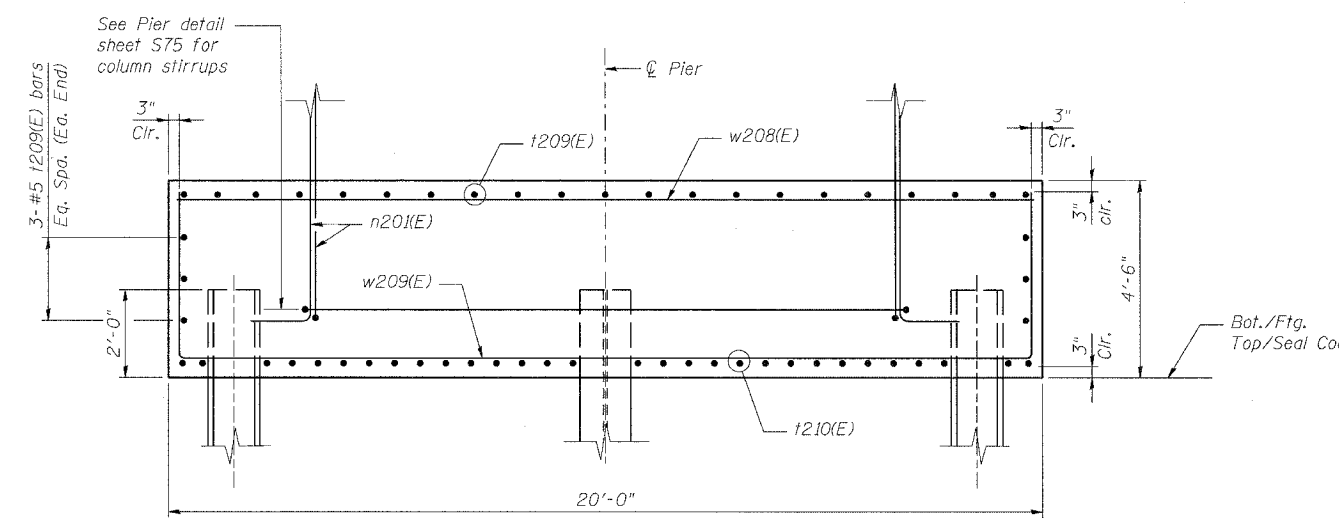
**PILE DATA**

	Pier 4	Pier 5
Type	HP 14x117	HP 14x117
Nominal Required Bearing	-	-
Allowable Resistance Available	-	-
Estimated Vertical Length	23 ft	21 ft
No. Production Piles	6	6
No. Test Piles	0	0
Negative Skin Friction Allowance	-	-
Minimum Pile Tip Elevation	5' into shale	5' into shale

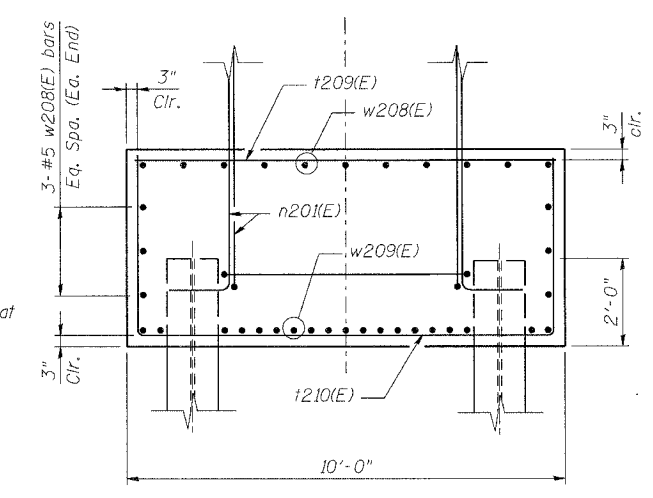
Piles are provided for lateral resistance only.  
Piles shall be predrilled 5' into shale.  
See Special Provision "Setting Piles in Rock."

**NOTES:**

1. Not Used
2. Maximum or peak trapezoidal bearing pressure  $Q_{max} = 7.3 \text{ ksf}$ .
3. Due to limited depth for seal coat construction, Pier 5 may require driving sheeting into shale, supplemental pumping, a water elevation below El. 373.5, or other acceptable means to address the hydrostatic head.
4. See Special Provision: Piers 4 & 5 Foundation Construction.
5. For Pier Plan and Elevations, See sheets S73-S75.
6. For Reinforcement Bar Bending Details, See sheet S80.
7. For Bill of Materials, See Sheets S81-S85.



SECTION D-D



SECTION E-E

DESIGNED	CDF
CHECKED	YS/HMA
DRAWN	RMG
CHECKED	CDF

ILLINOIS DEPARTMENT OF TRANSPORTATION  
IL ROUTE 15/IN ROUTE 64  
OVER WABASH RIVER PUBLIC WATERS  
FAP 827 SECT 12Z-3, 12BR

**PIERS 4 & 5  
FOOTING DETAILS**

**benesch**  
alfred benesch & company  
Engineers • Surveyors • Planners  
205 North Michigan Avenue, Suite 2400  
Chicago, Illinois 60601  
312-665-0450  
Job No. 3426

SN: 093-0021 (IL)/9502700 (IN) STA. 1036+27  
WABASH CO., IL. DATE: JUNE 15, 2007

m:\proj3426\stage-2\structures\design\sub\spid1007.dgn 1:01:48 PM 6/26/2007