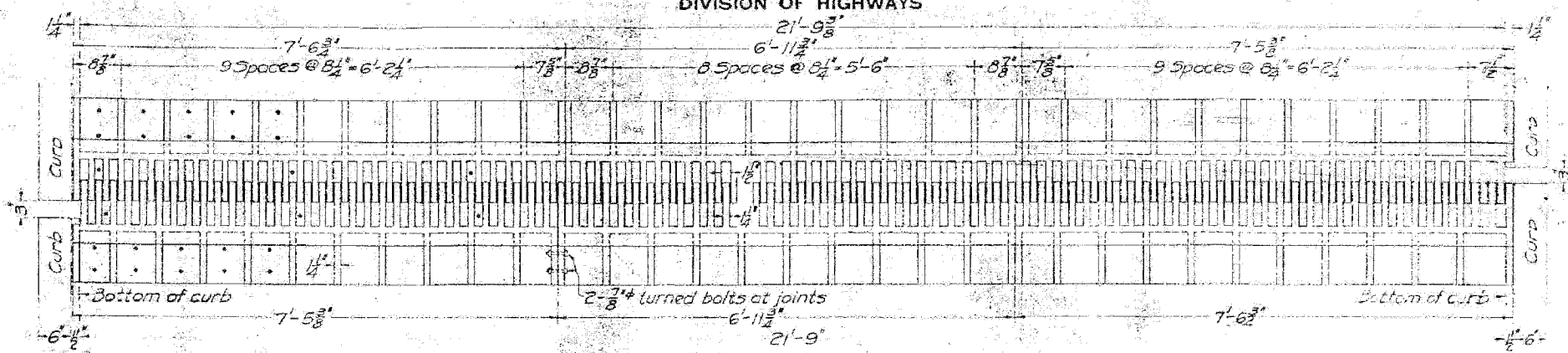


ROUTE No.	SECTION	COUNTY	TOTAL SHEETS	SHEET NO.
F.A.P. 827	12Z-3, 12BR	WABASH, IL GIBSON, IN	158	135
STA.		TO STA.		
F.H.W.A. REGION		PROJECT		

STATE OF ILLINOIS
DEPARTMENT OF PUBLIC WORKS & BUILDINGS
DIVISION OF HIGHWAYS

SHEET NO 5
12 SHEETS

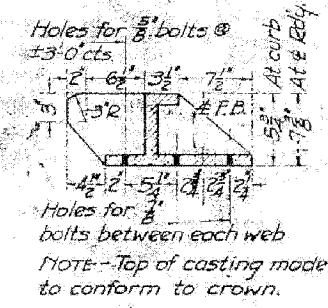


PLAN OF EXPANSION JOINT CASTINGS
All metal - Cast Steel 1/2\"/>

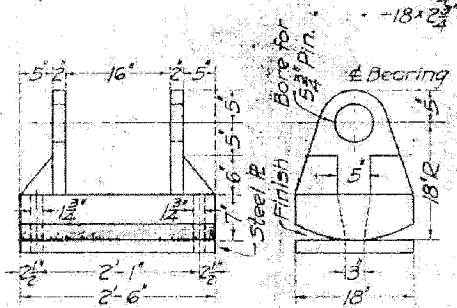
- BEARING PLATES REQUIRED
- Use 2 Pls - 18\"/>

NOTES

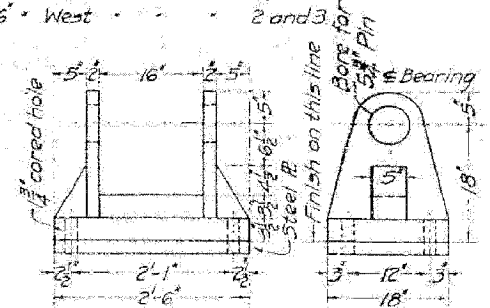
- Rivets 7/8\"/>
- Holes punched 15/16\"/>
- All main truss connections, both shop and field, shall be subpunched 1/16\"/>
- Each truss shall be assembled complete for reaming.
- Field connections shall be match marked while assembled.
- Floor beam connections shall be reamed to a hardened steel template one inch thick.
- Holes may be punched full size for building up members and in connections on portals, sway braces, laterals, stringers and rail.
- Inspection by Illinois Division of Highways before painting.
- Paint - one coat in shop, three coats in field.
- Class X Concrete shall be used in floor and parapet walls. Maximum size of coarse aggregate 1 inch.
- Concrete floor shall be given a smooth finish according to the Specs. for finishing the surface of concrete bridge floors.



SECTION OF EXP. JT. CASTING



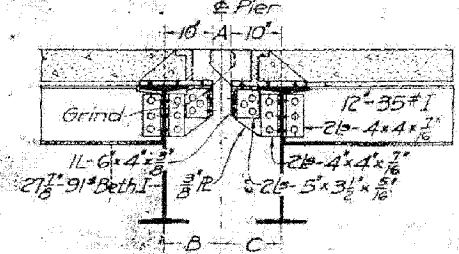
CAST IRON ROCKER
24 Required



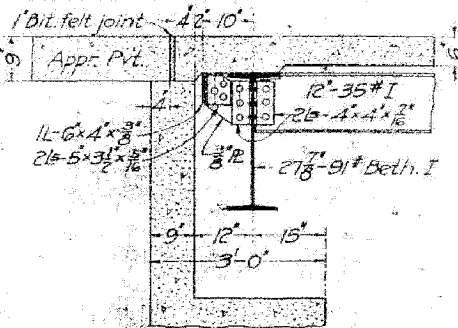
CAST IRON BOLSTER
24 Required

	Pier 1	Pier 2	Pier 3	Pier 4	Pier 5	Pier 6	Pier 7	Pier 8	Pier 9	Pier 10	Pier 11
A	5 1/2'	4 1/8'	4 1/8'	4 1/8'	4 1/8'	4 1/8'	4 1/8'	4 1/8'	4 1/8'	4 1/8'	4 1/8'
B	13 1/2'	12 3/8'	12 3/8'	12 3/8'	12 3/8'	12 3/8'	12 3/8'	12 3/8'	12 3/8'	12 3/8'	12 3/8'
C	12 3/8'	12 3/8'	12'	12 3/8'	12 3/8'	12 3/8'	12 3/8'	12 3/8'	12 3/8'	12 3/8'	12 3/8'

- A - Joint between spans
- B - Pier to Pier & F.B. @ East end of span.
- C - Pier to Pier @ West



EXP. DETAILS AT PIERS



SECTION AT ABUTMENT

BILL OF MATERIAL - 12 SPANS

Bars	No.	Size	Length
a	8148	1/2"	22'-9"
b	3240	1/2"	24'-6"
c	5424	1/2"	2'-6"
d	5424	1/2"	2'-6"

Class X Concrete - Cu. Yds. 1297.2
Reinforcing Steel - Lbs. 194,970
Structural Steel - Lbs. 5330,880
Cast Iron (Rockers, etc.) - Lbs. 48940
Name Plate 2
Class X Conc. (Parapets) - Cu. Yds. 6.1

EXPANSION DETAILS
MOUNT CARMEL BRIDGE
OVER
WABASH RIVER
BETWEEN
ILLINOIS AND INDIANA

FOR INFORMATION ONLY

COMPUTED	- H.S. - DAK	EXAMINED	Dec 20, 1929
CHECKED	- O.B.K. - 1121	BRIDGE ENGINEER	
DRAWN	- J.B. - 1121	PASSED	
CHECKED	- J.L.S.	ENGINEER OF DIVISION	
SPECIAL	ASSEMBLED	APPROVED	
CHECKED			

Revised 9-5-30 10-6-30
L.P. A.T.C.