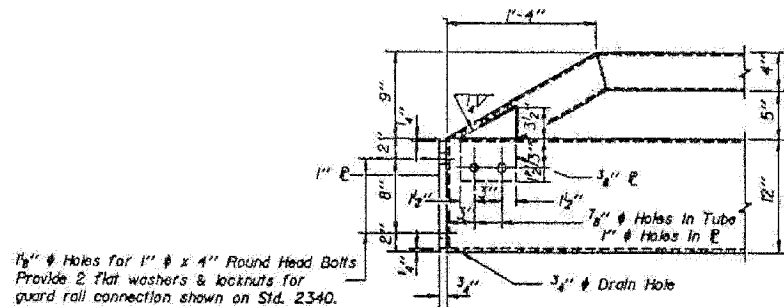
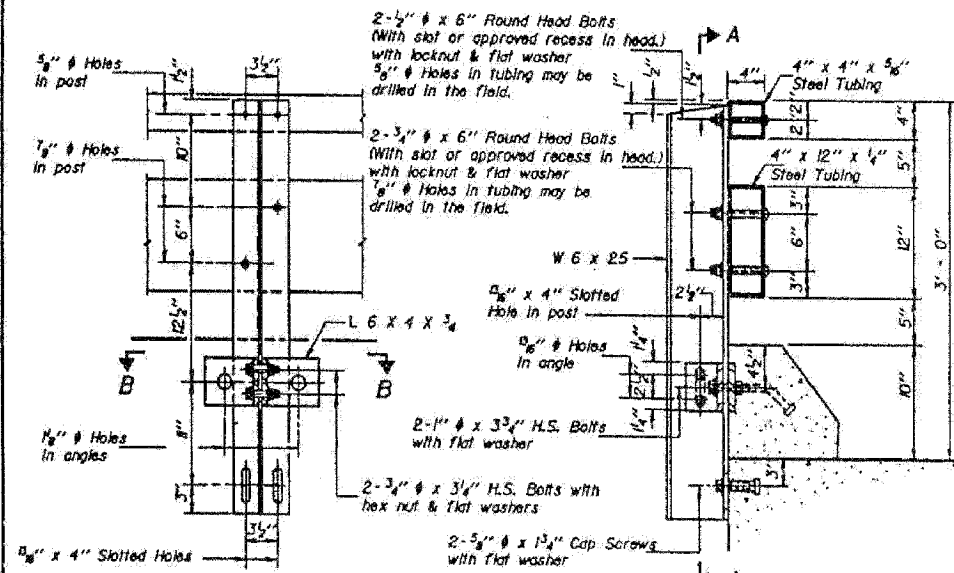


ROUTE No.	SECTION	COUNTY	TOTAL SHEETS	SHEET NO.
F.A.P. 827	12Z-3, 12BR	WABASH, IL GIBSON, IN	158	146
STA.		TO STA.		
F.H.W.A. REGION		ILLINOIS PROJECT		

STATE OF ILLINOIS
DEPARTMENT OF TRANSPORTATION

PROJECT NO.	SECTION	SHEET NO.	SHEET TOTAL
827	12Z-3, 12BR	31	16
PROJECT NAME: WABASH COUNTY			
DRAWN BY: BHF-827(1)			

FOR INFORMATION ONLY



NOTES

Hollow structural steel tubing shall conform to the requirements of ASTM designation A-500 Grade B Structural Steel Tubing.

All other steel shapes and plates shall conform to the requirements of AASHTO M-183 except posts and angles shall conform to AASHTO M-223, Grade 50.

Bolts, cap screws, and nuts shall conform to the requirement of ASTM designation A-307 except for high strength bolts, nuts and washers noted which shall conform to AASHTO M-184.

All bolts, nuts, cap screws, washers and lock washers shall be galvanized in accordance with AASHTO M-232.

All posts, railing, rail splices, anchor devices and angles shall be galvanized after shop fabrication in accordance with AASHTO M-11 and ASTM A-385. Galvanized rail shall not be painted.

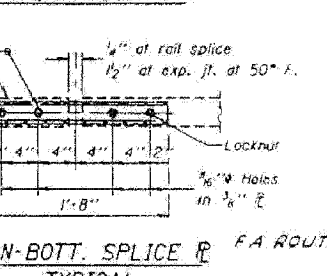
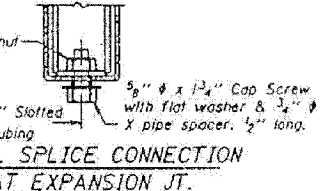
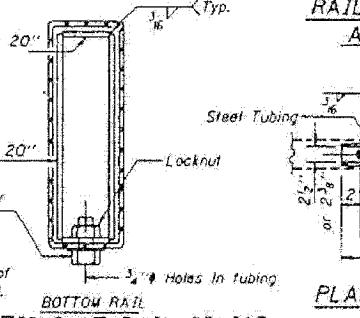
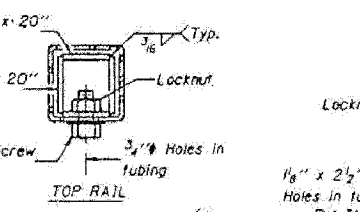
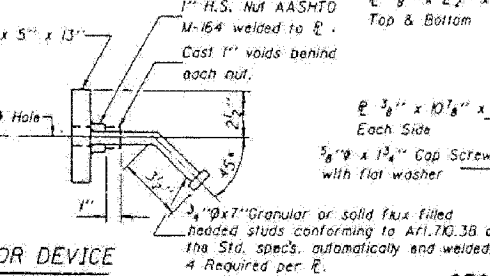
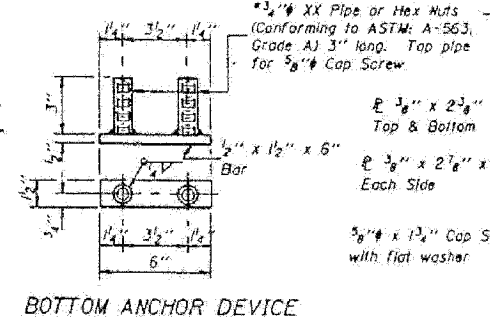
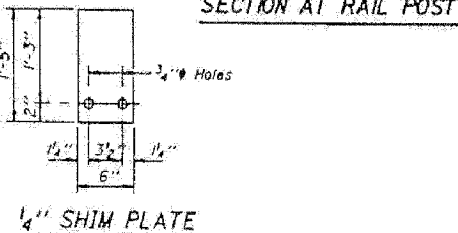
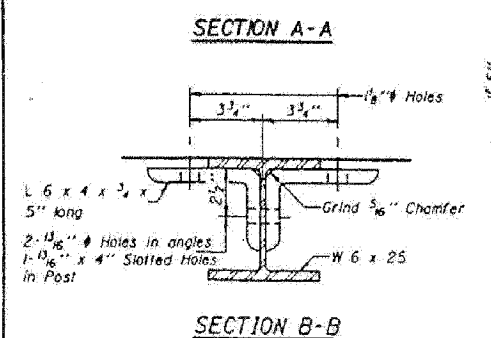
Railing shall be in accordance with Section 508 of the Standard Specifications, except as noted, and shall be paid for at the contract unit price per lined foot for STEEL RAILING, TYPE T-1.

All field drilled holes shall be coated with an approved zinc rich paint before erection.

The lower portion of the post flange in contact with concrete shall receive two coats of asphalt paint conforming to Section 714.08 Type B or piece 1/2" fabric bearing pad between the post and concrete.

The 1/2" high strength bolts used to connect the 6" x 4" x 3/4" angles to the post shall be tightened in accordance with Article 507.04(g)(3) of the Standard Specifications. The 1" high strength bolts connecting the angles to the concrete shall be tightened to a snug fit and given an additional 1/2 turn. The 5/8" cap screws in bottom of posts shall be tightened to a snug fit only.

For multi-span bridges, sufficient 1/4" x 6" x 1'-5" galvanized steel shims shall be provided to align rail between adjacent spans. Cost incidental to Steel Railing.



CURB & RAIL BILL OF MATERIAL

Bar	No.	Size	Length	Shape
a		#6		
Reinforcement Bars				Lbs.
Class X Concrete				Cu. Yds.
Steel Railing Type T-1				Lin. Ft. 5450

TYPE T-1 STEEL RAILING

FA ROUTE 827 (IL.15) SECTION (HBI42) BR WABASH COUNTY

DESIGNED

CHECKED

DRAWN

CHECKED

R-24A 12-31-84 01'-0" Maximum Post Spacing