

ROUTE No.	SECTION	COUNTY	TOTAL SHEETS	SHEET NO.
F.A.P. 827	12Z-3, 12BR	WABASH, IL GIBSON, IN	158	147
STA.		TO STA.		
F.H.W.A. REGION		ILLINOIS PROJECT		

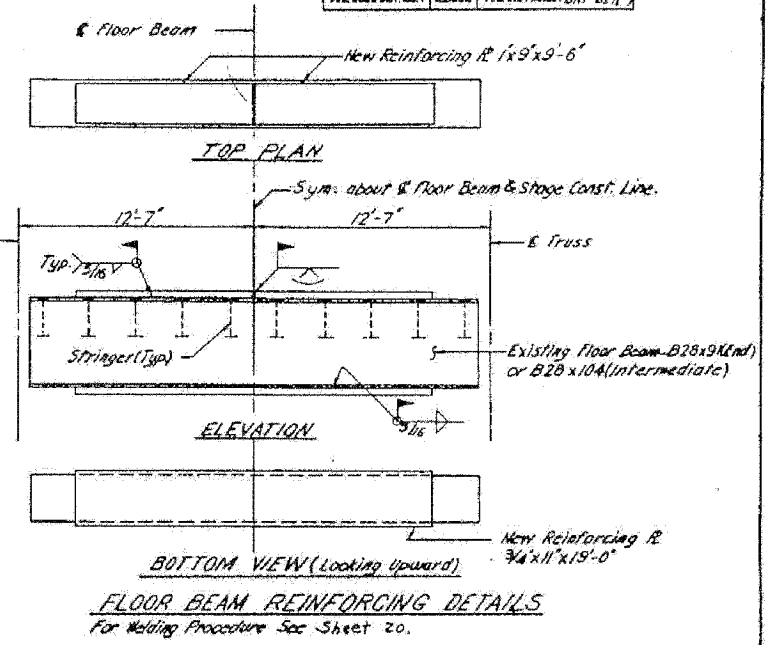
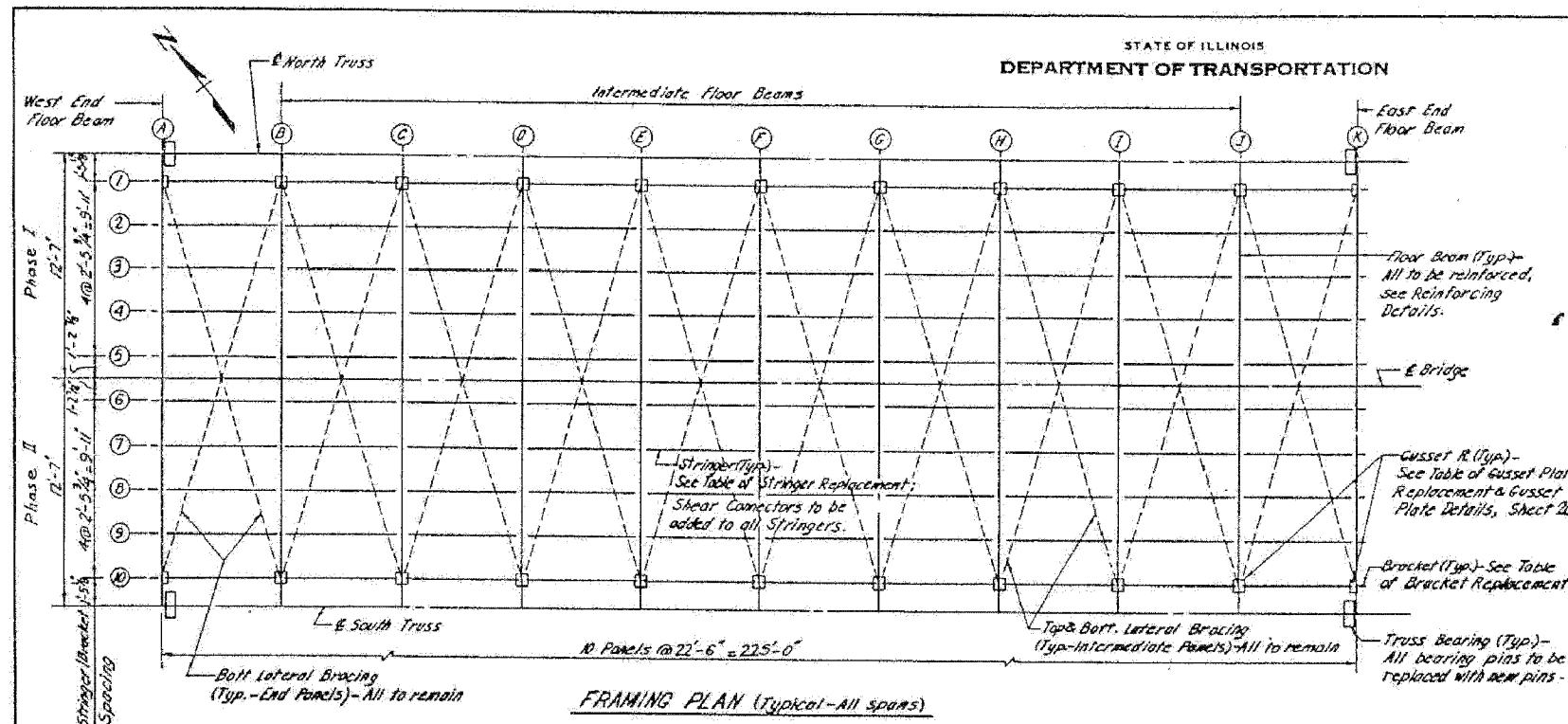


TABLE OF STRINGER REPLACEMENT

PANEL	SPAN 1	SPAN 2	SPAN 3	SPAN 4	SPAN 5	SPAN 6
A-B	1,10	1,2,9,10	1,10	1,2,3,9,10	1,2,3,7,8,9,10	1,10
B-C	1,10	1,10	1	1,10	1,10	1,10
C-D	1,10	1,10	1	1,2,10	1,10	1,10
D-E	1,10	1	1,10	1,10	1,10	1,10
E-F	1,10	1	1,10	1,2,10	1,10	1,10
F-G	1,10	1,10	1,10	1,10	1,10	1,10
G-H	1	1,10	1,10	1,10	1,10	1,10
H-I	1,10	1,10	1	1,10	1,10	1,10
I-J	1,10	1,10	1,10	1,9	10	1,10
J-K	1,2,3,10	1,2,4,9,10	1	-	1,2,7,8,9,10	1,2,9,10

PANEL	SPAN 7	SPAN 8	SPAN 9	SPAN 10	SPAN 11	SPAN 12
A-B	1,2,9,10	1,2,3,4,9,10	1,10	1,10	1,2,3,9,10	1,2,3,9,10
B-C	1,10	1,10	1,10	1,10	1,10	1,10
C-D	1,10	1,10	1,10	1,2,10	1,10	1,10
D-E	1,10	1,10	1,10	1,10	1,10	1,10
E-F	1,10	1,10	1,10	1,10	1,10	1,10
F-G	1,10	1,10	1,10	1,10	1,10	1,10
G-H	1,10	1,2,10	1,10	1,10	1,10	1,10
H-I	1,10	1,2,10	1,10	1,10	1,2,10	1,10
I-J	1,10	1,10	1,9,10	1,2,10	1,10	1,10
J-K	1,2,9,10	1,2,9,10	1,2,3,9,10	1,9,10	1,9,10	1,10

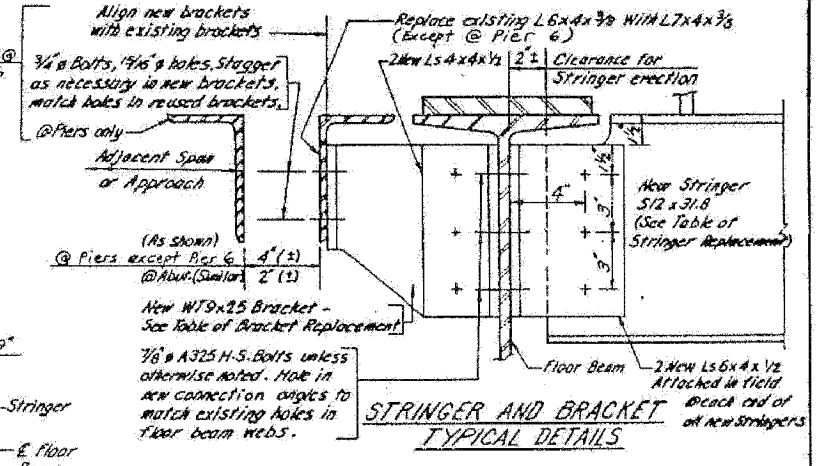
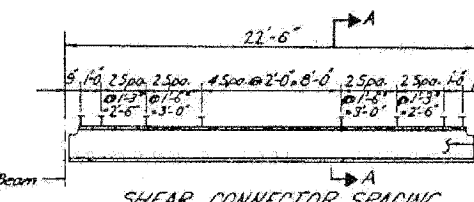
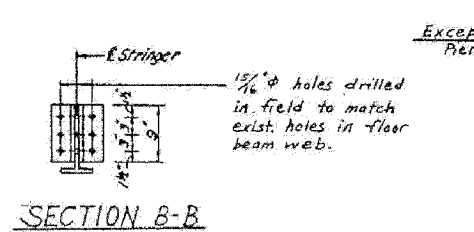
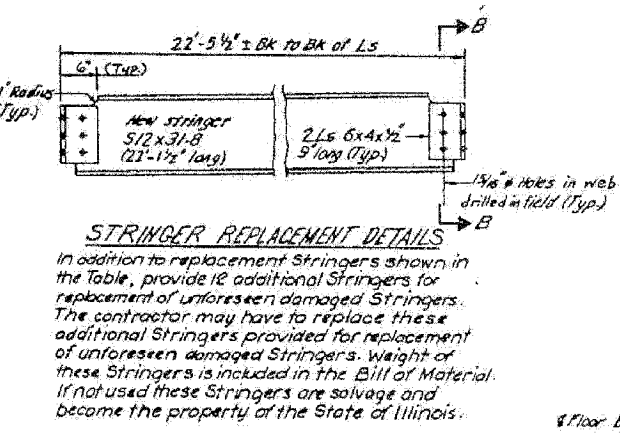
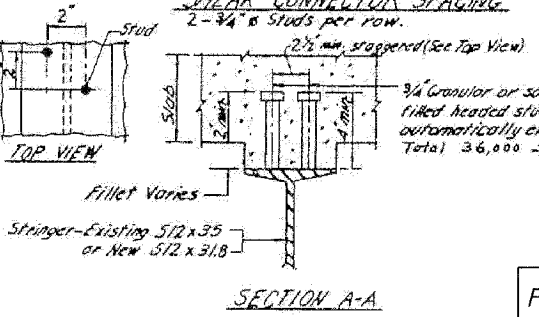


TABLE OF BRACKET REPLACEMENT

PANEL LINE	SPAN 1	SPAN 2	SPAN 3	SPAN 4	SPAN 5	SPAN 6
A	1,10	1,2,9,10	1,10	1,2,3,10	1,2,3,7,8,9,10	1,10
K	1,2,3,10	1,2,4,9,10	1	-	1,2,7,8,9,10	1,2,3,4,5,6,7,8,9,10

PANEL LINE	SPAN 7	SPAN 8	SPAN 9	SPAN 10	SPAN 11	SPAN 12
A	1,2,3,4,5,6,7,8,9,10	1,2,3,4,9,10	1,10	1,10	1,2,3,9,10	1,2,3,9,10
K	1,2,9,10	1,2,9,10	1,2,3,9,10	1,9,10	1,9,10	1,10



Notes:
 All existing structural steel not replaced with new steel shall be reused.
 All loose or deteriorated rivets in reused structural steel shall be removed and replaced with high strength bolts. See Special Provisions.

HAZEL ET & ENDAL
 CONSULTING ENGINEERS
 FILE NO.
 DRAWN BY: JDS: P
 CHECKED BY: G.W.
 APPROVED BY: JDS

For details, see Stringer and Bracket Typical Details this sheet, except * see Section A-A sheet 21 also.

FOR INFORMATION ONLY

STRUCTURAL STEEL REPAIRS
 FA ROUTE 827 (IL15) SECTION (HB142) BR
 WABASH COUNTY

Work Sheets 19-21 together.

SHEET NO. 13
 SHEETS 25

DATE	BY	REVISION	TOTAL SHEETS	SHEET NO.
11-27-87	HA	WABASH	31	19