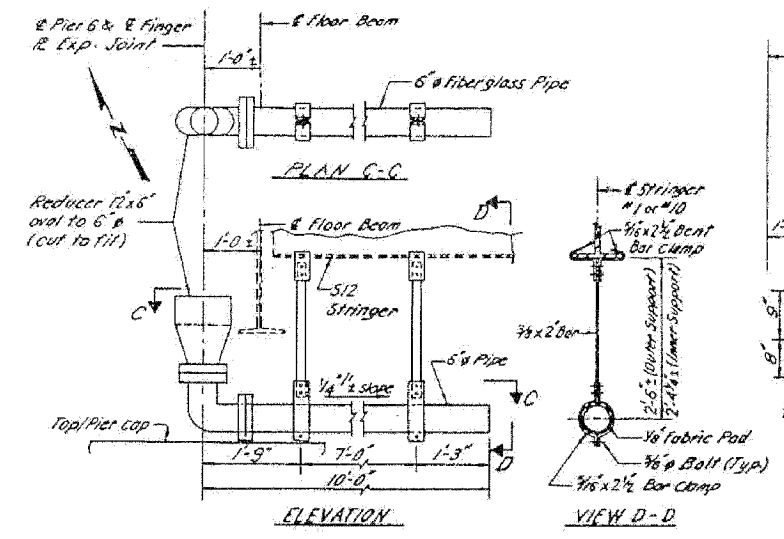


ROUTE No.	SECTION	COUNTY	TOTAL SHEETS	SHEET NO.
F.A.P. 827	12Z-3, 12BR	WABASH, IL GIBSON, IN	158	149
STA.		TO STA.		
F.H.W.A. REGION		ILLINOIS	PROJECT	

ITEM	NEW STRG. (S12x31.0)	EXIST. STRG. (S12x33)	END FL. DIM. (REINFORCED)	WATERM. FL. DIM. (REINFORCED)
*I _s (in. ⁴)	218.0	227.0	6192.0	7628.0
*I _c (in. ⁴)	979.0	926.0	-	-
*S _s (in. ³)	36.4	37.8	417.0	506.6
*S _c (in. ³)	69.2	73.96	-	-
D.L. (KIP)	0.201	0.201	0.09	0.104
M _{DL} (K)	14.8	14.9	88.7	167.5
I _s (in. ⁴ /ft)	4.9	4.7	2.6	4.0
M _{DL} (K)	36.9	36.9	354.6	380.4
M _{max} (K)	15.8	15.8	106.4	114.1
M _{LL+I} (K)	52.7	52.7	461.0	494.5
I _s (in. ⁴ /ft)	9.1	8.8	13.3	11.7
I _s (in. ⁴ /ft)	14.0	13.9	15.9	15.7
*VR (K)	10.3	12.9	-	-

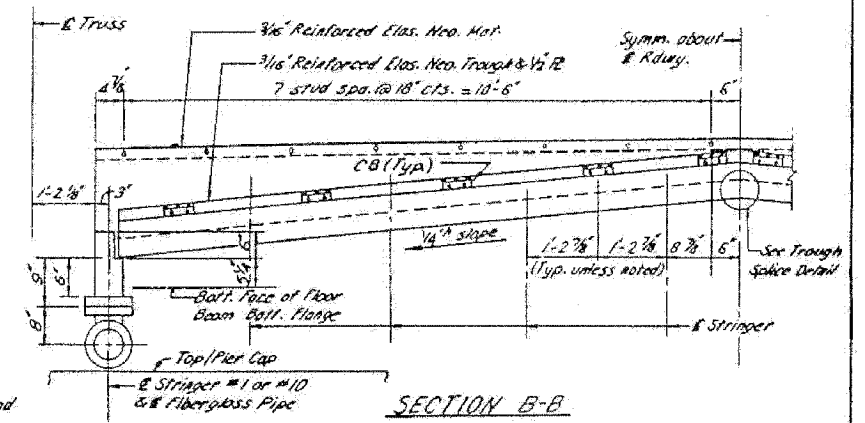
* I_s & S_s are the moment of inertia & section modulus of steel section.
 I_c & S_c are the moment of inertia & section modulus of composite section.
 VR is the max. LL+I shear range in span, used to determine shear connector spacing.

STATE OF ILLINOIS
 DEPARTMENT OF TRANSPORTATION

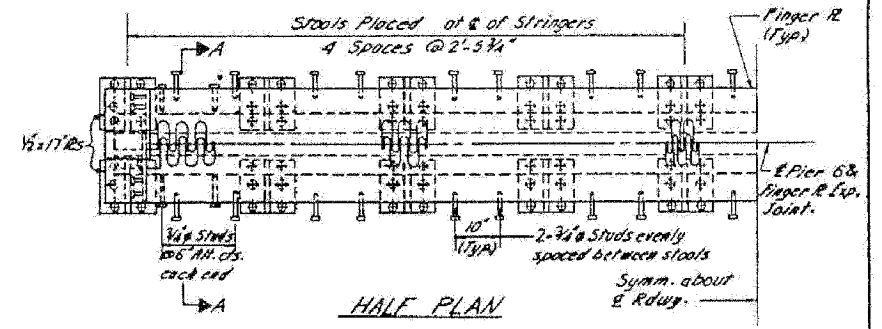


DRAIN DETAILS

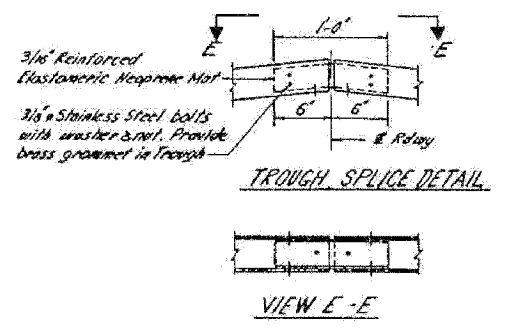
NOTE:
 Fiberglass pipe shall conform to ASTM D2995, with short time rupture strength and tensile stress of 30,000 p.s.i. minimum.
 The exterior surface of the fiberglass pipe shall be painted in accordance with the paint system specified for Structural Steel.



SECTION B-B

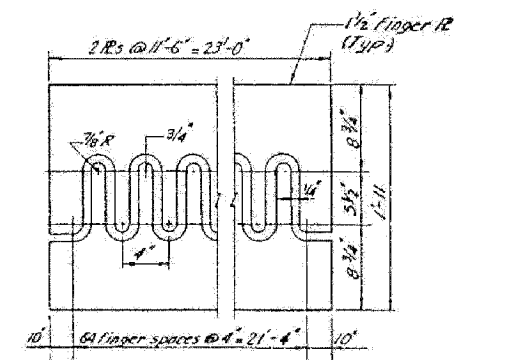


HALF PLAN

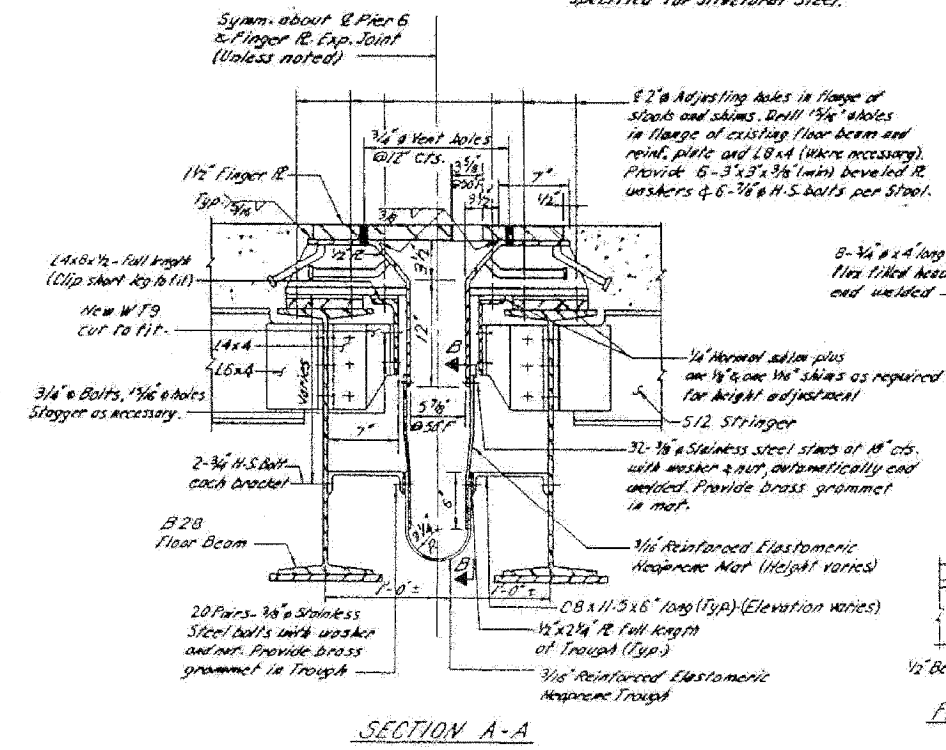


TROUGH SPLICE DETAIL

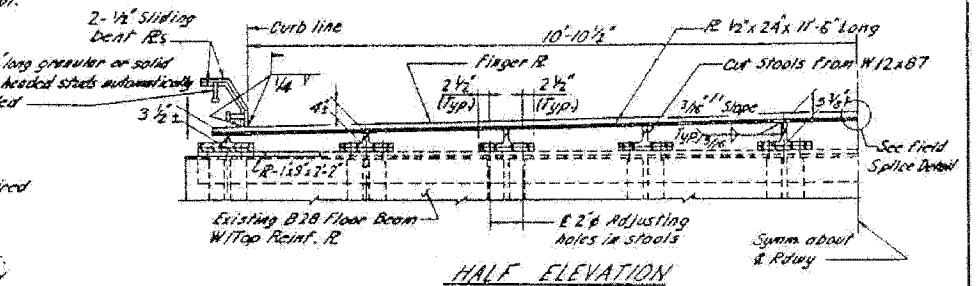
VIEW E-E



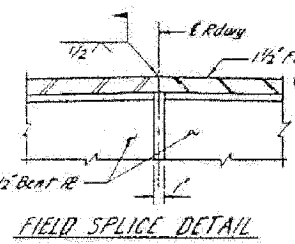
FLAME CUTTING DIAGRAM FOR FINGER PLATES



SECTION A-A



HALF ELEVATION
 FINGER PLATE EXPANSION JOINT AT PIER 6



FIELD SPLICE DETAIL

FOR INFORMATION ONLY

STRUCTURAL STEEL DETAILS
 F.A. ROUTE 827 (IL 15) SECTION (HB142) BR
 WABASH COUNTY

HAZELET + ERDAL, INC.
 CONSULTING ENGINEERS
 FILE NUMBER
 DRAWN BY: J.B.D./S.O./
 CHECKED BY: G.H.C./
 APPROVED BY: [Signature]