

F.A. RTE.	SECTION	COUNTY	TOTAL SHEETS	SHEET NO.
322	(23-BR-2)BR	FAYETTE	19	1

STATE OF ILLINOIS  
DEPARTMENT OF TRANSPORTATION  
DIVISION OF HIGHWAYS

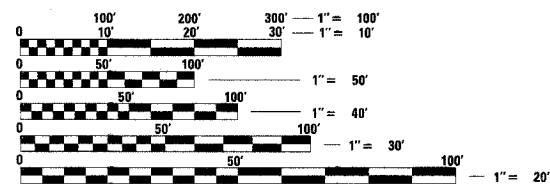
**PROPOSED  
HIGHWAY PLANS**

FAP ROUTE 322 (US ROUTE 51)  
SECTION (23-BR-2)BR  
PROJECT: ACBHF-0322(081)  
FAYETTE COUNTY  
C-97-008-03

FOR INDEX OF SHEETS, SEE SHEET NO. 2

**HIGHWAY CLASSIFICATION**

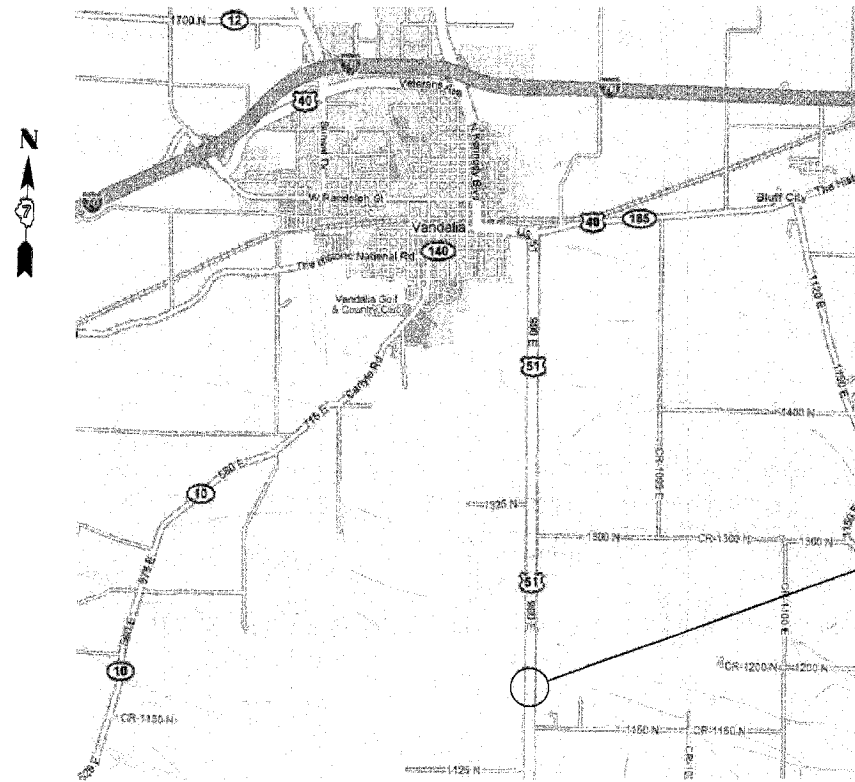
ROUTE: F.A.P. 322 (US 51)  
CLASSIFICATION: OTHER PRINCIPAL ARTERIAL  
A.D.T.: 3950  
A.D.T.T.: 727  
D.H.V.: 474  
DESIGN SPEED: 55 M.P.H.



FULL SIZE PLANS HAVE BEEN PREPARED USING STANDARD ENGINEERING SCALES. REDUCED SIZED PLANS WILL NOT CONFORM TO STANDARD SCALES. IN MAKING MEASUREMENTS ON REDUCED PLANS, THE ABOVE SCALES MAY BE USED.

J.U.L.I.E.  
JOINT UTILITY LOCATION INFORMATION FOR EXCAVATION  
1-800-892-0123

CONTRACT NO. 94968



LOCATION MAP

NOT TO SCALE

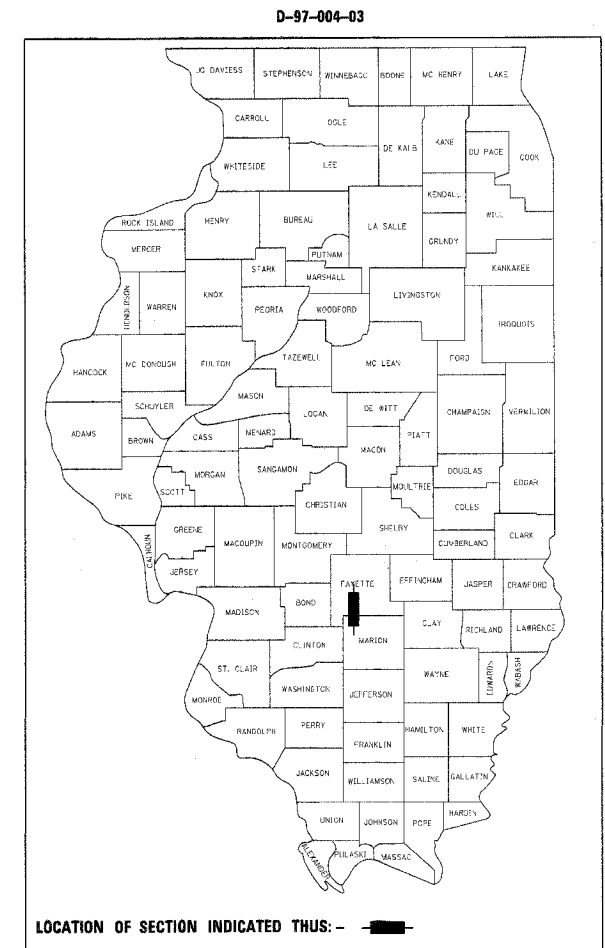
TOTAL LENGTH OF PROJECT = 232 FT (0.044 MI)  
NET LENGTH OF PROJECT = 232 FT (0.044 MI)

SECTION (23-BR-2)BR  
SN 026-0037  
STATION 195+61.17 TO 197+92.83  
DECK BEAM REPLACEMENT



*Ronald H. Benton*  
8/23/2007 Exp 11/30/10

**BA**  
BENTON & ASSOCIATES, INC.  
Consulting Engineers / Land Surveyors  
1970 West Lafayette Ave. Jacksonville, IL 62650  
Phone: 217-245-4146 Fax: 217-245-4149  
IL Design Firm Registration No. 184-000852



LOCATION OF SECTION INDICATED THIS: - [black rectangle] -

STATE OF ILLINOIS  
DEPARTMENT OF TRANSPORTATION  
DIVISION OF HIGHWAYS

SUBMITTED: August 24, 2007

*Christie M. Reed*  
DEPUTY DIRECTOR OF HIGHWAYS, REGION ENGINEER

October 12, 2007  
*Eric E. Harms*  
ENGINEER OF DESIGN AND ENVIRONMENT

October 12, 2007  
*Milton R. Sess, P.E.*  
DIRECTOR OF HIGHWAYS, CHIEF ENGINEER

**PRINTED BY THE AUTHORITY  
OF THE STATE OF ILLINOIS**