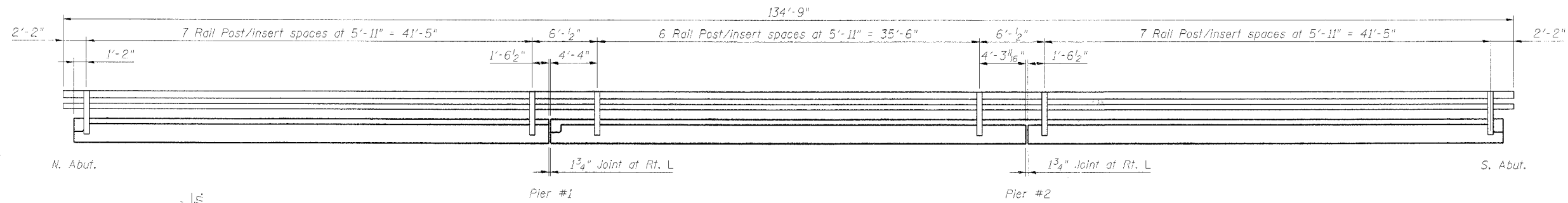


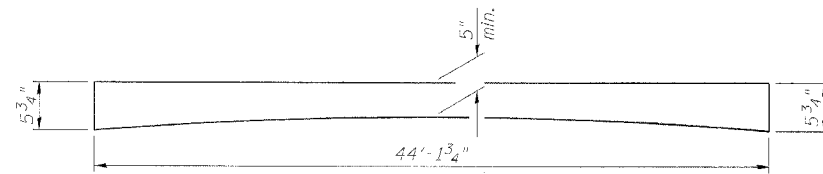
STATE OF ILLINOIS
DEPARTMENT OF TRANSPORTATION

ROUTE NO. FAP 322	SECTION 123-BR -2/BR	COUNTY FAYETTE	SHEET NO. 19	SHEET 13	SHEET NO. 5 11 SHEETS
FED. ROAD DIST. NO. 1		SCALE	FED. AID PROJECT		

Contract #94968

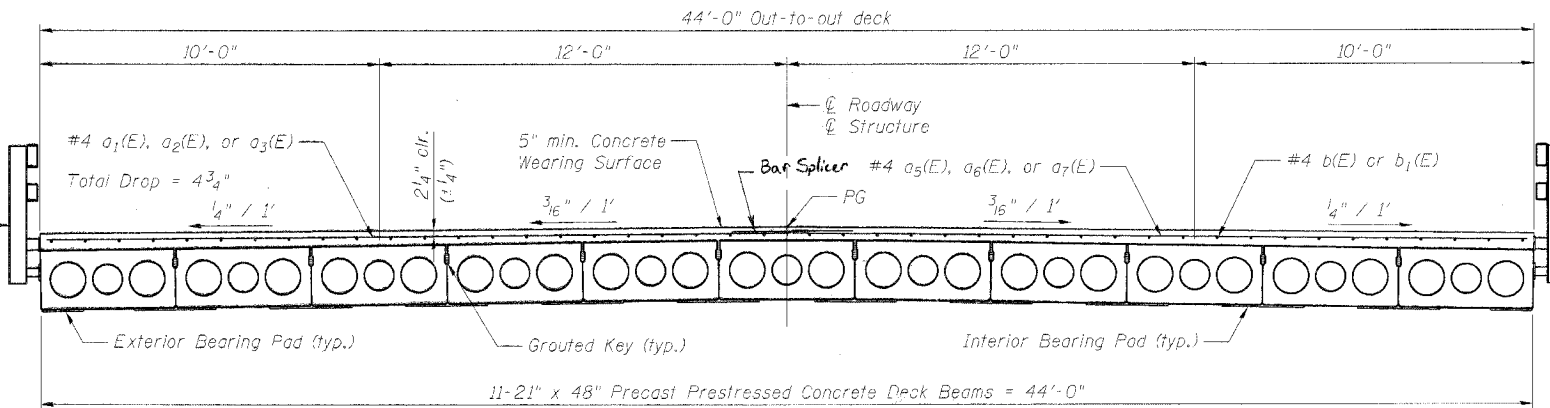


RAIL POST SPACING

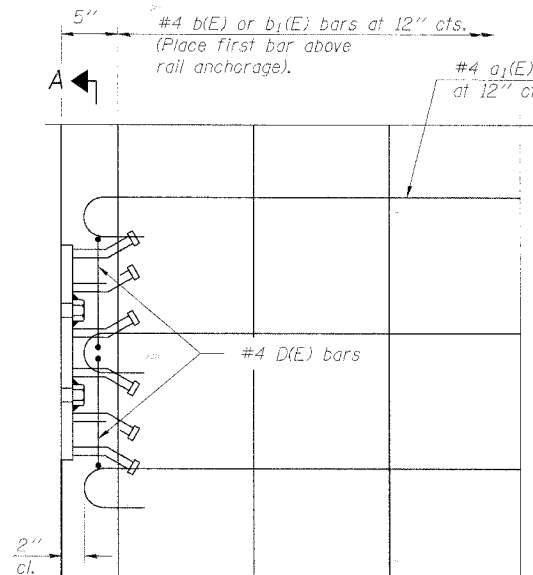


REINFORCED CONCRETE WEARING SURFACE PROFILE

Steel Bridge Rail, Type SM
See Sheet 9 of 11 for details



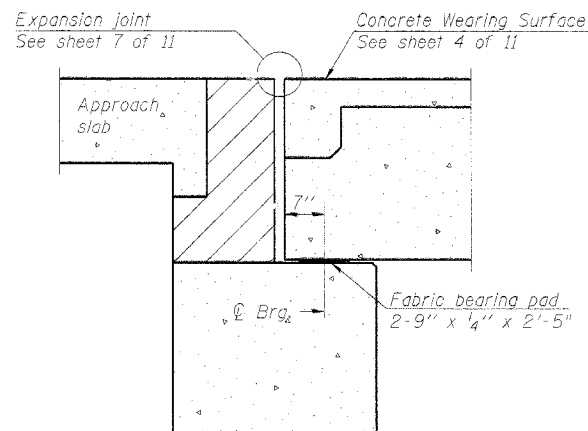
CROSS SECTION



PLAN

Notes:

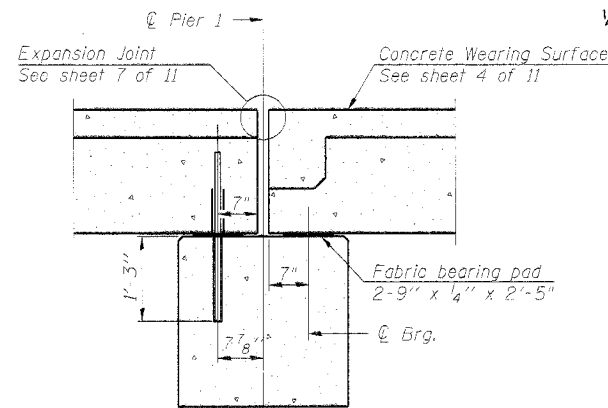
The rail anchorage shall be cast with the beam and the wearing surface shall be cast in the field. Formwork necessary for the wearing surface may be secured utilizing the bottom rail anchorage inserts and/or additional inserts cast into the beam. Drilling into the beam will not be permitted. See sheet 6 for location of Section A-A



SECTION THRU ABUTMENT

Notes:

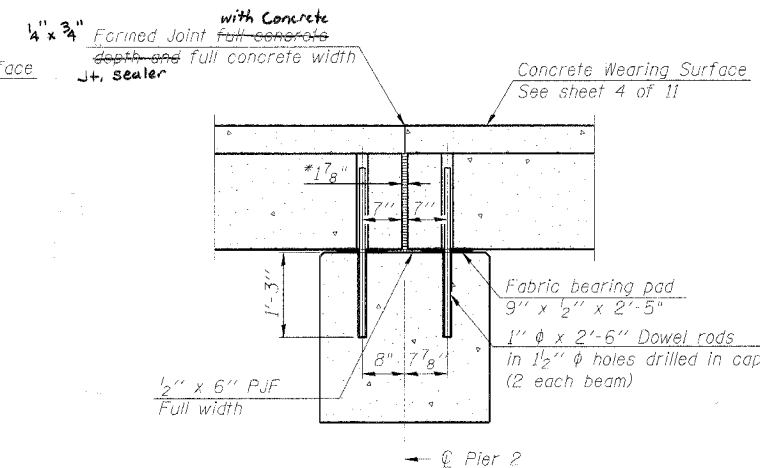
All horizontal dimensions are at right angles to beam ends. Hatched area to be poured after concrete wearing surface is in place. See sheet 6 of 11 for bearing pad details.



SECTION THRU EXPANSION PIER

Notes:

After beams have been erected, holes shall be drilled into substructure and anchor dowels placed. Dowel holes shall be filled with non-shrink grout to top of beam and allowed to cure min. 24 hrs. prior to grouting the shear keys. All horizontal dimensions are at right angles to beam ends. Hatched area to be poured after beams are in place. See sheet 6 of 11 for bearing pad details.



SECTION THRU FIXED PIER

*1 7/8" Jt. shall be filled with non-shrink grout. 1 7/8" dimension may vary to accommodate tolerance in beam lengths.

DESIGNED MBH	200
CHECKED NRF	EXAMINED
DRAWN MBH	PASSED
CHECKED NRF	ENGINEER OF BRIDGES AND STRUCTURES

SUPERSTRUCTURE DETAILS
US 51 / HICKORY CREEK
F.A.P. ROUTE 322
FAYETTE COUNTY
SN 026-0037