

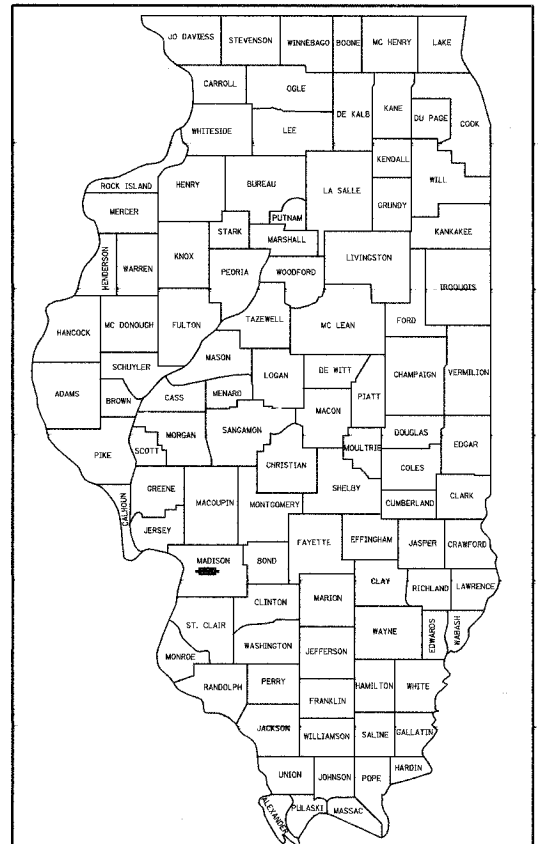
F.A. RTE.	SECTION	COUNTY	TOTAL SHEETS	SHEET NO.
8899 03-00026-00-RP		MADISON	107	1
FED. ROAD DIST. NO.	ILLINOIS	FED. AID PROJECT		

CONTRACT NO. 97295

INDEX OF SHEETS

SHEET NUMBER	DESCRIPTION
1	COVER SHEET
2	GENERAL NOTES AND LEGEND
3-4	SUMMARY OF QUANTITIES
5-8	TYPICAL SECTIONS - EXISTING
9-19	TYPICAL SECTIONS - PROPOSED
20-26	QUANTITY SCHEDULES
27-29	REFERENCE POINT TIES
30	ADVANCED WARNING SIGNS
31-37	STAGE CONSTRUCTION
38-46	PLAN AND PROFILE SHEETS
47-55	DRAINAGE SHEETS
56-58	INTERSECTION GEOMETRIC DETAIL SHEETS
59-61	PAVEMENT MARKING SHEETS
62-66	REMOVAL SHEETS
67-72	EROSION AND SEDIMENT CONTROL SHEETS
73-74	ENTRANCE DETAILS
75-76	MISCELLANEOUS DETAILS
77-107	CROSS SECTIONS

**STATE OF ILLINOIS**  
**DEPARTMENT OF TRANSPORTATION**  
**DIVISION OF HIGHWAYS**  
**PLANS FOR PROPOSED**  
**ROADWAY IMPROVEMENT**  
**VILLAGE OF GLEN CARBON**  
**F.A.U. ROUTE 8899 (GLEN CROSSING ROAD)**  
**PHASE 1**  
**SECTION NO. 03-00026-00-RP**  
**PROJECT NO. M-5011 (211)**  
**MADISON COUNTY**  
**JOB NO. C-98-345-06**

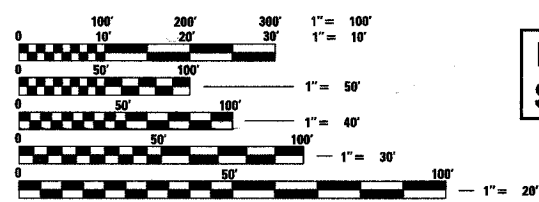


LOCATION OF SECTION INDICATED THUS: - ■ -

STANDARDS

STD. NO.		
000001-04	602601-01	
001006	602701-01	
280001-03	604001-02	
420001-06	604006-02	
420101-03	606001-03	
420111-01	701301-02	
420701-01	701311-02	
424001-04	701501-03	
542301-01	702001-06	
542306-01	720001	
542401	720006-01	
602301-01	720011	
602306-01	729001	
602401-01	780001-01	
602406-02	BLR 17-3	
602416	BLR 22-4	

SCALES  
 PLAN 1" = 20'  
 PROFILE HORIZ. 1" = 20'  
 PROFILE VERT. 1" = 5'  
 CROSS SECTIONS 1" = 10' HORIZ.  
 1" = 5' VERT.

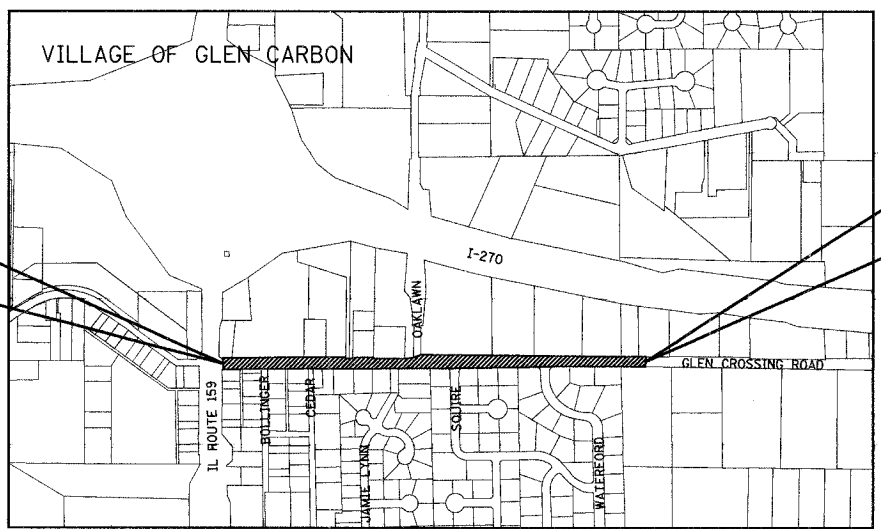


FULL SIZE PLANS HAVE BEEN PREPARED USING STANDARD ENGINEERING SCALES, REDUCED SIZED PLANS WILL NOT CONFORM TO STANDARD SCALES, IN MAKING MEASUREMENTS ON REDUCED PLANS, THE ABOVE SCALES MAY BE USED.

J.U.L.I.E.  
 JOINT UTILITY LOCATION INFORMATION FOR EXCAVATION  
 1-800-892-0123

DESIGN DESIGNATION  
 FUNCTIONAL CLASSIFICATION: URBAN COLLECTOR  
 ADT: 2315 (2005) 3010 (2025)  
 DHV (2025): 301  
 DESIGN SPEED: 30 MPH

BEGIN PROJECT STATION 10 + 39.22



END PROJECT STATION 38 + 81.24

LOCATION MAP  
 SCALE: 1" = 550'  
 NET LENGTH OF PROJECT: 2803.13 LIN. FT. = 0.531 MILES  
 SECTIONS 35 & 36, T. 4 N., R. 8 W., 3RD P.M.



Brian F. Kulick, P.E. No. 49936  
 DATE 3/14/07  
 Job No. 040630

VILLAGE OF GLEN CARBON

Approved: *Robert R. ...* 3-14-07  
 Village of Glen Carbon, Mayor

Passed: 3-28-07  
*Deanne ...*  
 District 8 Engineer of Local Roads & Streets

Releasing for Bid Based on Limited Review: 3-28-07  
*Mary C. Lamer*  
 Deputy Director of Highways, Region 5 Engineer

Juneau Associates, Inc. P.C.  
 CONSULTING ENGINEERS AND LAND SURVEYORS  
 2100 State Street, P.O. Box 1329  
 Granite City, Illinois 62040  
 Phone: (618) 877-1400 / (618) 452-5535  
 Fax: (618) 452-5541