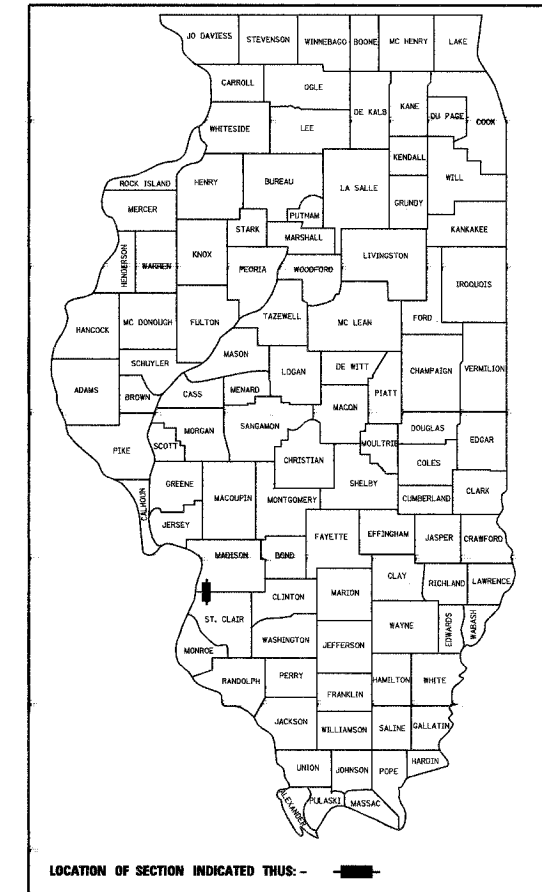


F.A.U. RTE.	SECTION	COUNTY	TOTAL SHEETS	SHEET NO.
05-00054-00-WR	MADISON	ILLINOIS	110	1
FED. ROAD DIST. NO.		ILLINOIS FED. AID PROJECT		
CONTRACT NO. 97326				

**STATE OF ILLINOIS**  
**DEPARTMENT OF TRANSPORTATION**  
**DIVISION OF HIGHWAYS**  
**OLD MADISON ROAD**  
**ROADWAY IMPROVEMENTS**  
**MADISON, ILLINOIS**  
**MADISON COUNTY & ST. CLAIR COUNTY**  
**SECTION NO. 05-00054-00-WR**  
**JOB NO. C-98-317-06**  
**PROJECT NO. HPP 0803(125)**

**INDEX OF SHEETS**

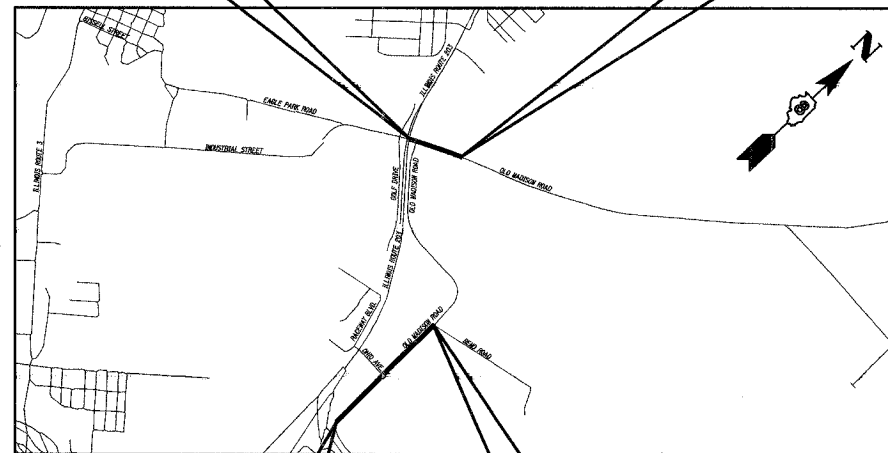
SHEET NUMBER	DESCRIPTION
1	COVER SHEET
2	HIGHWAY STANDARDS, GENERAL NOTES, AND LEGEND
3	SUMMARY OF QUANTITIES
4-7	TYPICAL SECTIONS - EXISTING
8-11	TYPICAL SECTIONS - PROPOSED
12-16	QUANTITY SCHEDULES
17	REFERENCE POINT TIES, COORDINATES AND BENCHMARKS
18	ADVANCED WARNING SIGNS
19-29	STAGE CONSTRUCTION
30-39	PLAN AND PROFILE SHEETS
40-55	DRAINAGE SHEETS
56-60	INTERSECTION GEOMETRIC SHEETS
61-66	PAVEMENT MARKING SHEETS
67-72	REMOVAL SHEETS
73-78	EROSION AND SEDIMENT CONTROL SHEETS
79-80	MISCELLANEOUS DETAILS
81-110	CROSS SECTIONS



**BEGIN PROJECT STATION 10 + 68.06**

**END PROJECT STATION 24 + 60.48**

**PLAN 1" = 20'**  
**PROFILE HORIZ. 1" = 20'**  
**PROFILE VERT. 1" = 5'**  
**CROSS SECTIONS 1" = 10' HORIZ.**  
**1" = 5' VERT.**



**BEGIN PROJECT STATION 99 + 91.65**

**END PROJECT STATION 133 + 58.17**

**LOCATION MAP**

SCALE: 1" = 2000'

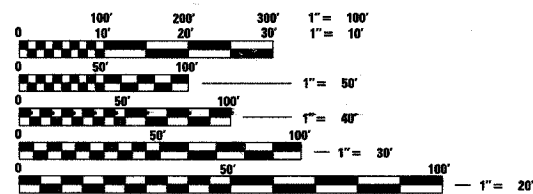
GROSS LENGTH OF PROJECT: 4758.94 LIN. FT. = 0.901 MILES

SECTION 31 & 32, T. 3 N., R. 9 W., 3RD P.M.

MADISON COUNTY

SECTION 5 & 6, T. 2 N., R. 9-10 W., 3RD P.M.

ST. CLAIR COUNTY



FULL SIZE PLANS HAVE BEEN PREPARED USING STANDARD ENGINEERING SCALES. REDUCED SIZED PLANS WILL NOT CONFORM TO STANDARD SCALES, IN MAKING MEASUREMENTS ON REDUCED PLANS, THE ABOVE SCALES MAY BE USED.

J.U.L.I.E.  
JOINT UTILITY LOCATION INFORMATION FOR EXCAVATION  
1-800-892-0123

**DESIGN DESIGNATION**

FUNCTIONAL CLASSIFICATION: LOCAL ROAD

OLD MADISON ROAD(NORTH)

ADT: 200 (2006) 244 (2026)

DHV (2026): 24

DESIGN SPEED: 30 MPH

OLD MADISON ROAD(SOUTH)

ADT: 2910 (2006) 3230 (2026)

DHV (2026): 323

DESIGN SPEED: 30 MPH



Expires 11-30-07

BRIAN E. KULICK, P.E. No. 49936  
 (Printed by Authority of the State of Illinois)  
 Job No. 061003

**Juneau Associates, Inc. P.C.**  
 CONSULTING ENGINEERS AND LAND SURVEYORS  
 2100 State Street, P.O. Box 1325  
 Granite City, Illinois 62040  
 Phone: (618) 877-1400 / (618) 452-5535  
 Fax: (618) 452-5541  
 100 North Research Drive  
 Edwardsville, Illinois 62025  
 Phone: (618) 659-0900 / (618) 659-0800  
 Fax: (618) 659-0941

**STATE OF ILLINOIS**  
Department of Transportation

Approved: 9/6/07  
  
Mayor, City of Madison

Passed: 9/11/07  
  
District 8 Engineer of Local Roads & Streets

Releasing for Bid Based on Limited Review: 9/11/07  
  
Deputy Director of Highways, Region 5 Engineer