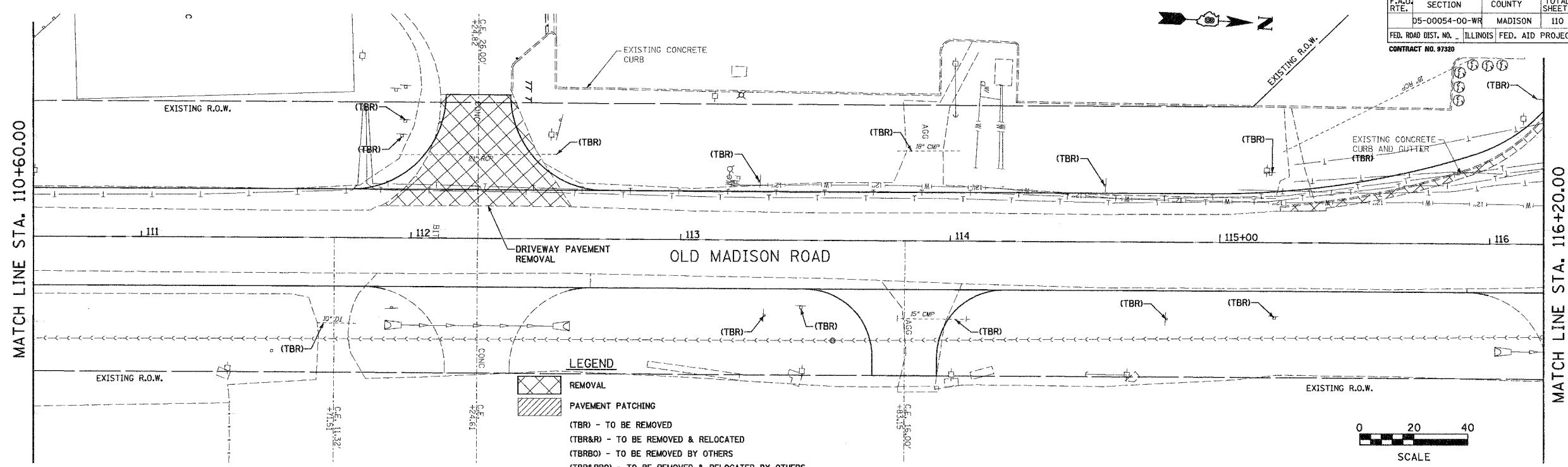
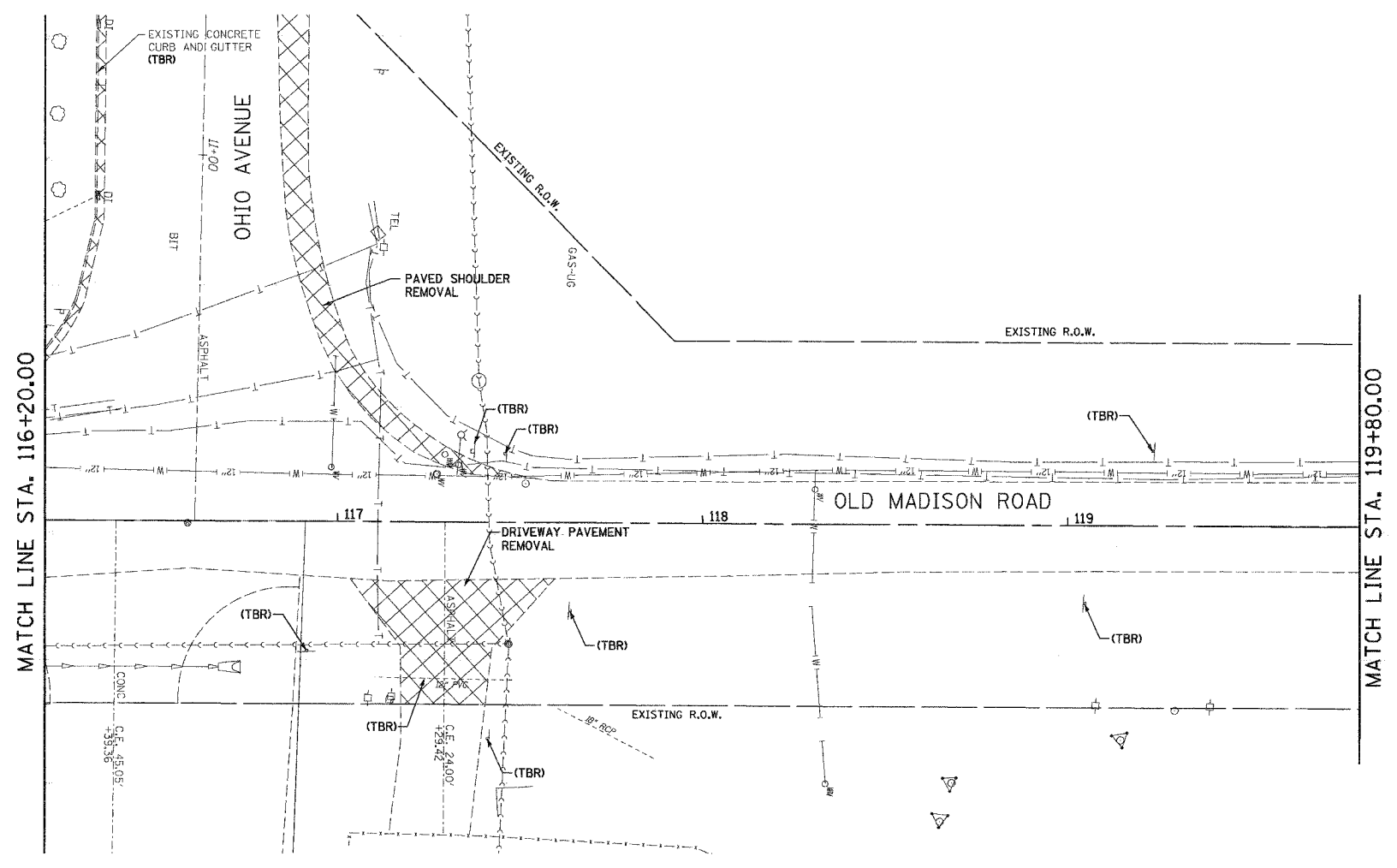


F.A.U. RTE.	SECTION	COUNTY	TOTAL SHEETS	SHEET NO.
D5-00054-00-WR		MADISON	110	68
FED. ROAD DIST. NO. ILLINOIS FED. AID PROJECT				
CONTRACT NO. 97320				

BY	DATE
FINAL SURVEY PLOTTED	
NOTE BOOK	
TEMPLATE	
AREAS	
CHECKED	
NO.	



BY	DATE
ORIGINAL SURVEY PLOTTED	
NOTE BOOK	
TEMPLATE	
AREAS	
CHECKED	
NO.	



LEGEND

REMOVAL

PAVEMENT PATCHING

(TBR) - TO BE REMOVED
 (TBR&R) - TO BE REMOVED & RELOCATED
 (TBRBO) - TO BE REMOVED BY OTHERS
 (TBR&RBO) - TO BE REMOVED & RELOCATED BY OTHERS

0 20 40
SCALE

REMOVAL

OLD MADISON ROAD
MADISON, ILLINOIS
SECTION 05-00054-00-WR

SCALE: 1 inch = 20 feet

NO.	DATE	BY	REMARKS

DSN. BY: BFK DATE: 06/06/07 SHEET: 68
 DWN. BY: JDH DATE: 06/06/07
 CHK'D: BFK DATE: 06/06/07
 DWG. NO. JOB NO. E061003 DGN. NAME: R542 OF 110 SHTS

Juneau Associates, Inc. P.C.
 CONSULTING ENGINEERS AND LAND SURVEYORS
 2005 Shaw Street, P.O. Box 1208
 Granite City, Illinois 62040
 Phone: (618) 939-4400 / (618) 939-4425
 Fax: (618) 939-4441

100 North Main Street
 Edwardsville, Illinois 62025
 Phone: (618) 939-4400 / (618) 939-4400
 Fax: (618) 939-4441