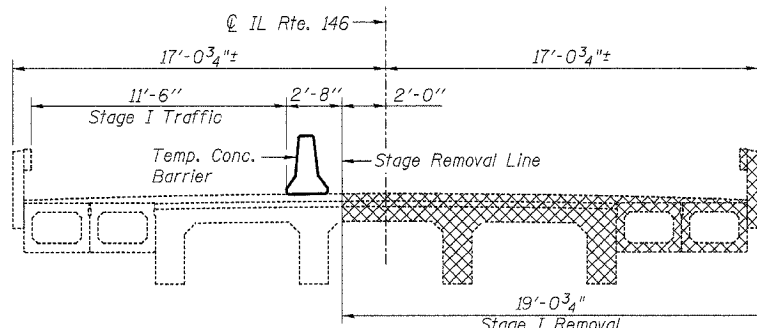


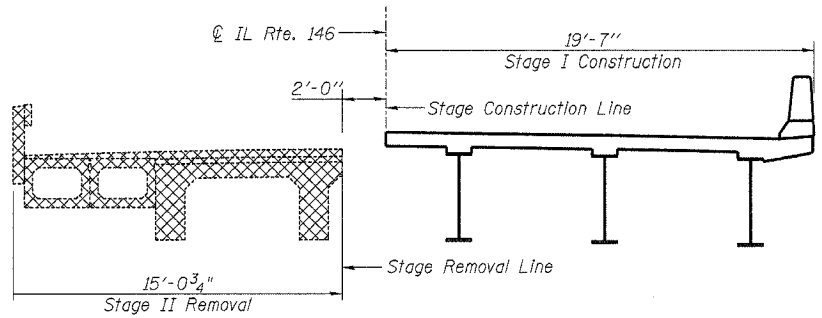
ROUTE NO.	SECTION	COUNTY	TOTAL SHEETS	SHEET NO.
F.A.P. 885	(107A) B-1	Johnson	38	25
FED. ROAD DIST. NO. 7		ILLINOIS	FED. AID PROJECT-	

SHEET NO. 3
16 SHEETS

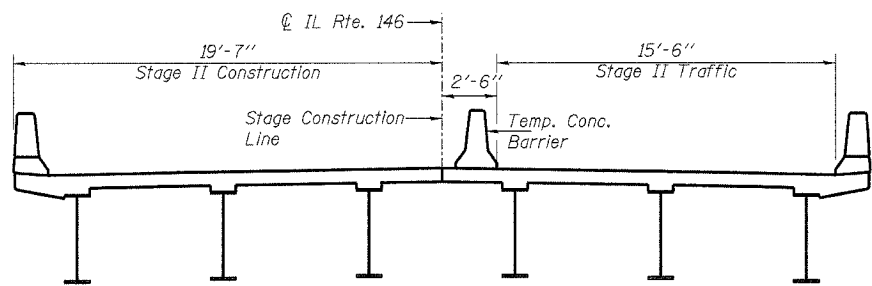
Contract # 98776



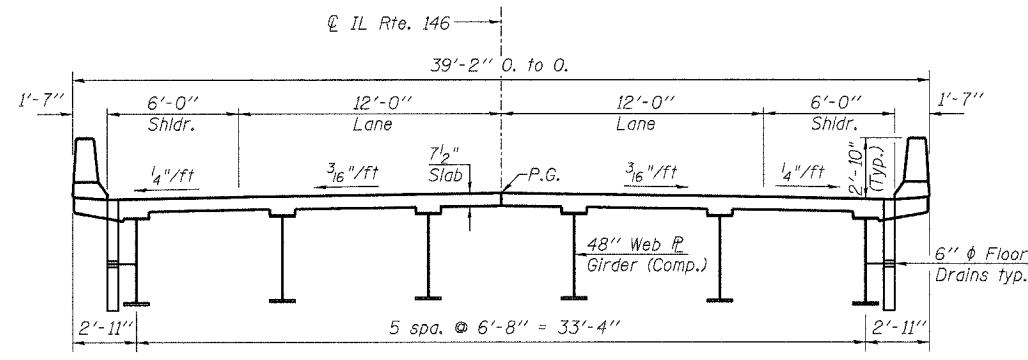
STAGE I REMOVAL & TRAFFIC
(Looking East)



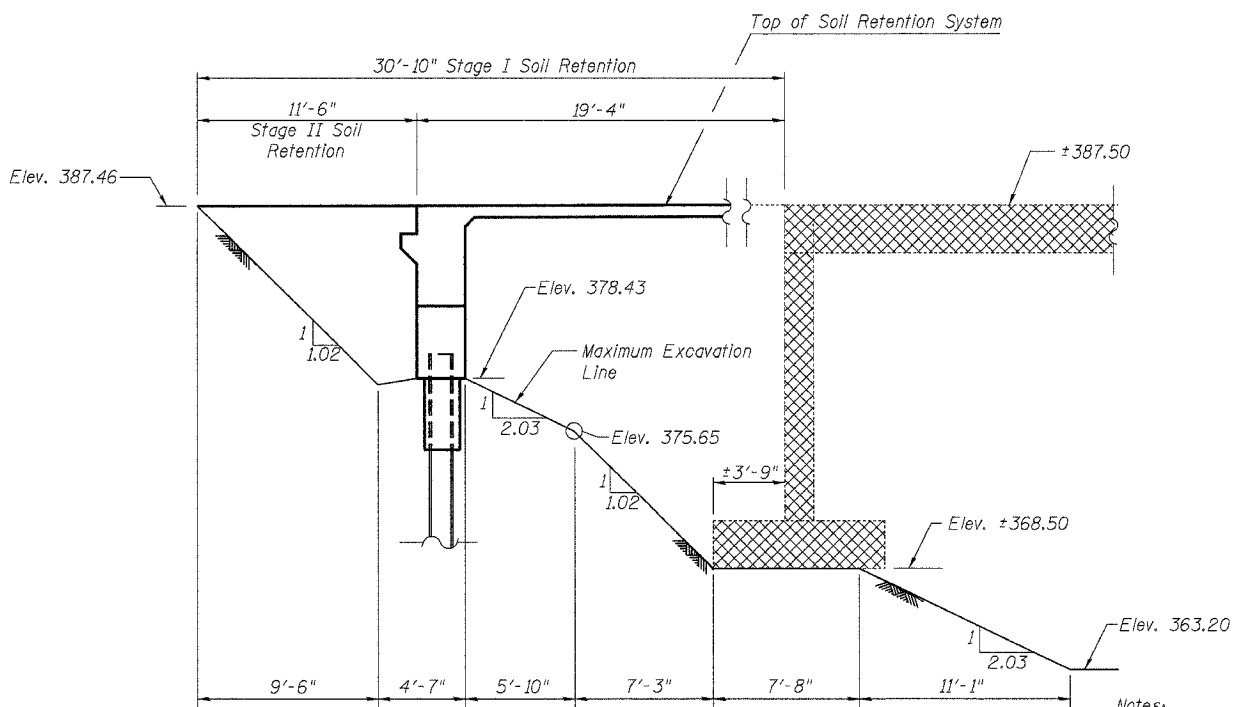
STAGE I CONSTRUCTION & STAGE II REMOVAL
(Looking East)



STAGE II CONSTRUCTION & TRAFFIC
(Looking East)



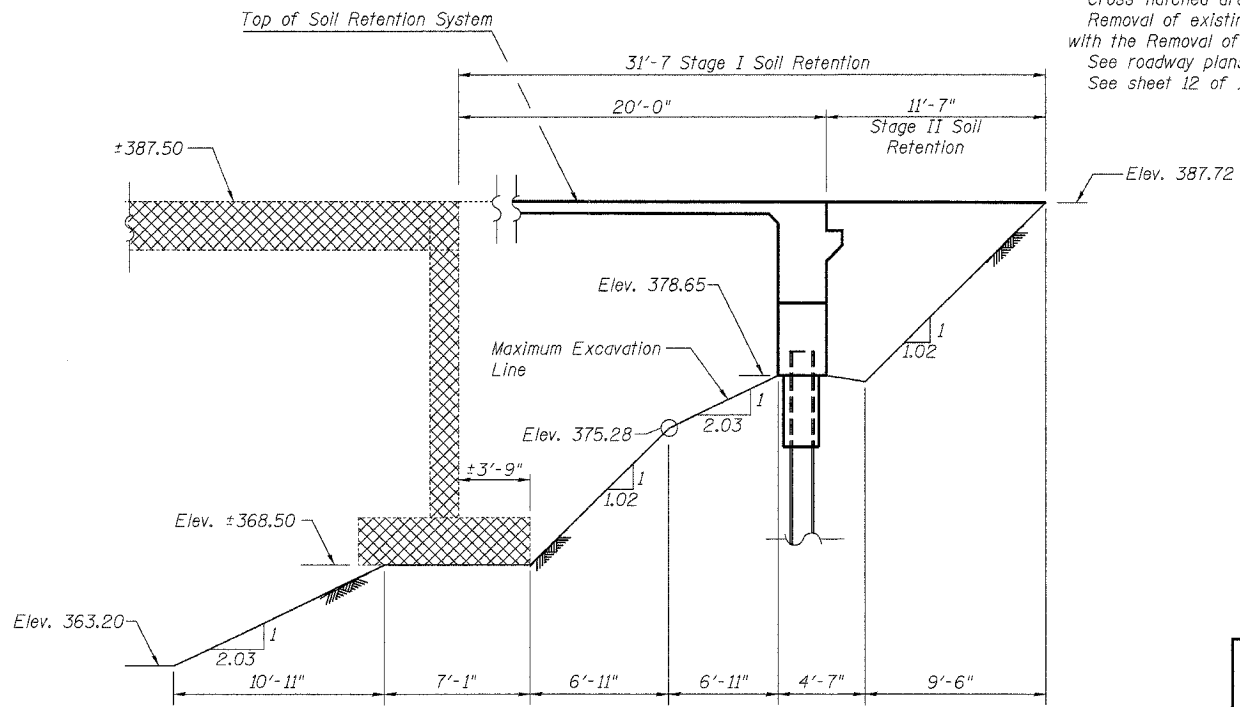
PROPOSED CROSS SECTION
(Looking East)



TEMPORARY SOIL RETENTION SYSTEM AT WEST ABUT.
(Horizontal dimensions along CL roadway)

Notes:

A cantilevered sheet piling design does not appear feasible and additional members or other retention systems may be necessary. The Contractor shall submit a temporary soil retention system design including plan details and calculations for review and acceptance by the Engineer.
Location of Stage Removal & Construction lines is also applicable to existing abutments.
Cross-hatched areas indicate removal of existing structures.
Removal of existing bridge railing and bituminous wearing surface is included with the Removal of Existing Structure.
See roadway plans for quantity of Temporary Concrete Barrier.
See sheet 12 of 16 for details of Temporary Concrete Barrier.



TEMPORARY SOIL RETENTION SYSTEM AT EAST ABUT.
(Horizontal dimensions along CL roadway)

REVISIONS	
NAME	DATE

LIN ENGINEERING, LTD.
Consulting Engineers
Chatham, Illinois
Designed By: KKH
Checked By: MTH
Date: 3/2007
Drawn By: AJJ
File: 044-0059.DGN

ILLINOIS DEPARTMENT OF TRANSPORTATION
STAGE CONSTRUCTION DETAILS
ILLINOIS ROUTE 146 OVER
BUCK RUN CREEK
F.A.P. ROUTE 885 - SEC. (107A)B-1
JOHNSON COUNTY
STA. 628+25.00
STRUCTURE NO. 044-0059

B:\2\2007 1:41:49 PM ...044-0059.dgn