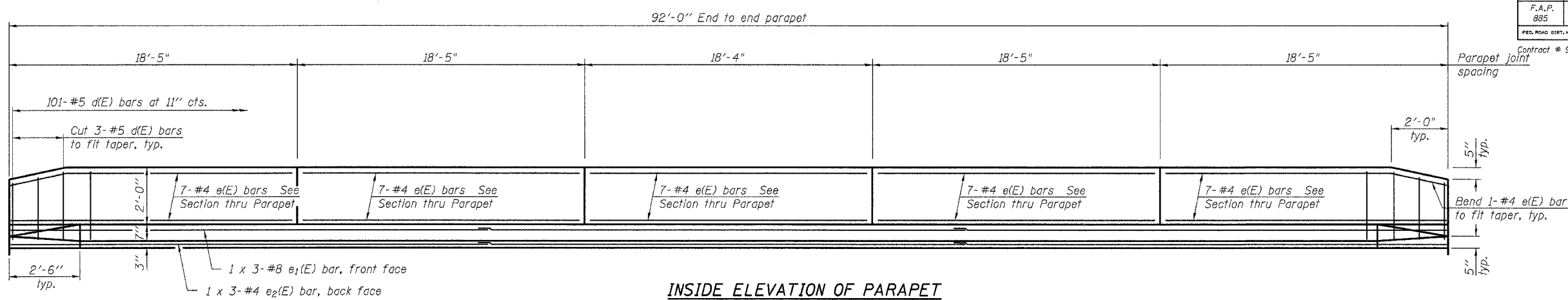


ROUTE NO.	SECTION	COUNTY	SHEETS	SHEET NO.
F.A.P. 885	(107A) B-1	Johnson	38	29
FED. ROAD DIST. NO. 7	ILLINOIS	FED. AID PROJECT-		16 SHEETS

Contract # 98776

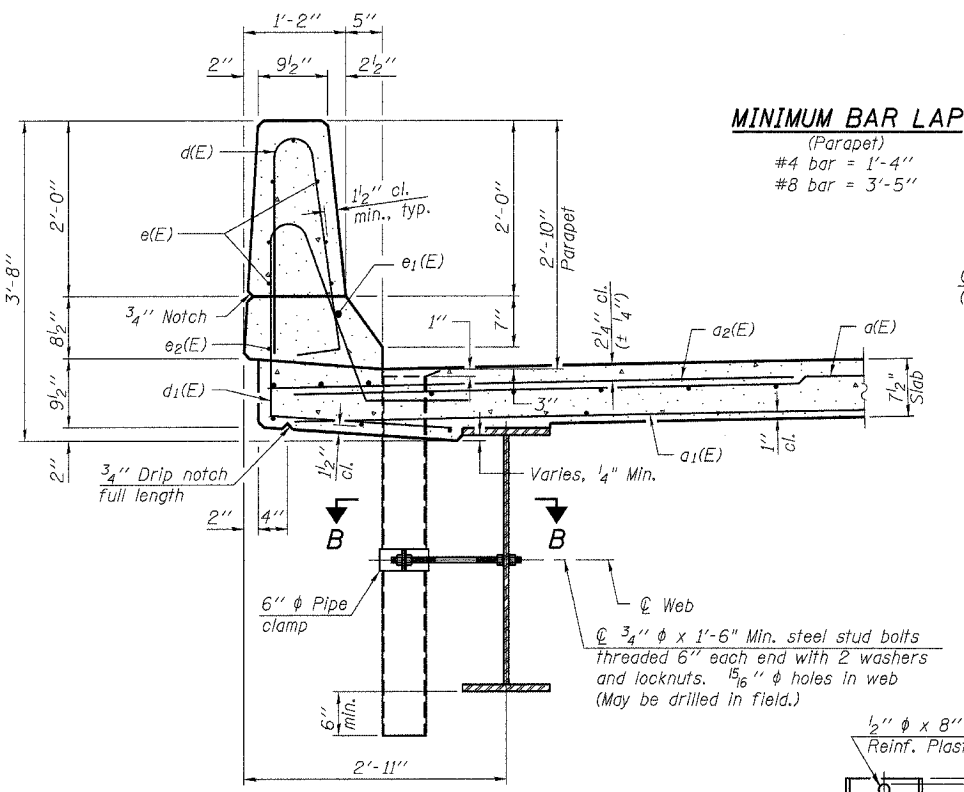


INSIDE ELEVATION OF PARAPET

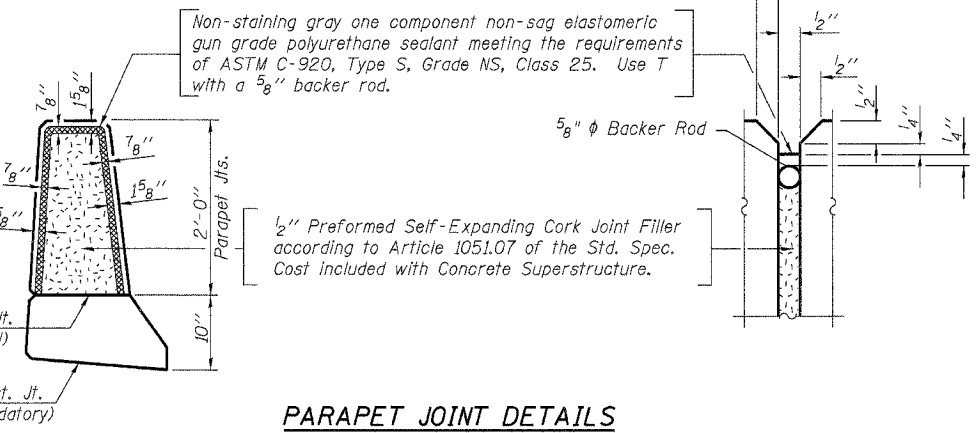
SUPERSTRUCTURE BILL OF MATERIAL

Bar	No.	Size	Length	Shape	
d(E)	370	#5	18'-11"	—	
a1(E)	124	#5	18'-7"	—	
a2(E)	370	#6	6'-0"	—	
a3(E)	8	#5	19'-1"	—	
b(E)	168	#5	24'-2"	—	
b1(E)	108	#5	31'-8"	—	
d(E)	202	#5	5'-7"	⌒	
d1(E)	202	#5	7'-6"	⌒	
e(E)	70	#4	18'-2"	—	
e1(E)	6	#8	32'-10"	—	
e2(E)	6	#4	31'-6"	—	
m(E)	8	#6	18'-8"	—	
m1(E)	12	#6	19'-6"	—	
m2(E)	24	#6	8'-5"	—	
m3(E)	8	#6	5'-5"	—	
m4(E)	4	#6	2'-0"	—	
m5(E)	4	#6	2'-7"	—	
s(E)	82	#5	5'-9"	⌒	
s1(E)	72	#4	12'-4"	⌒	
v(E)	80	#5	3'-4"	⌒	
Reinforcement Bars, Epoxy Coated				Pound	27600
Concrete Superstructure				Cu. Yds.	141.4
Floor Drains				Each	12

Bars Indicated thus 1 x 3 - #8 etc. Indicates 1 line of bars with 3 lengths per line.

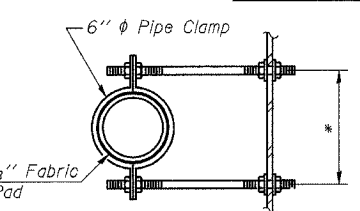


SECTION THRU PARAPET

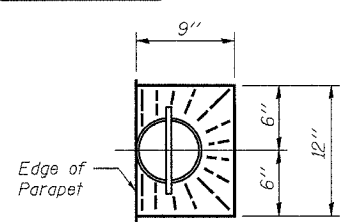


PARAPET JOINT DETAILS

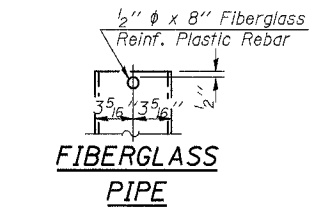
Notes:
The exterior surfaces of the floor drains shall be painted with the finish coat as specified in the special provisions for Cleaning and Painting New Metal Structures. The exterior surfaces of the drains shall be cleaned according to Steel Structures Painting Council's Spec. SSPC-SPI prior to painting.
Fiberglass pipe shall conform to ASTM D 2996, with short-time rupture strength hoop tensile stress of 30,000 p.s.i. minimum.



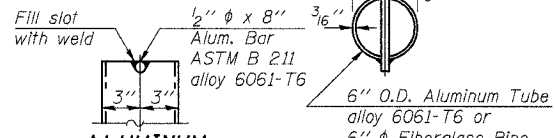
SECTION B-B
* Dimension as required by Pipe Clamp



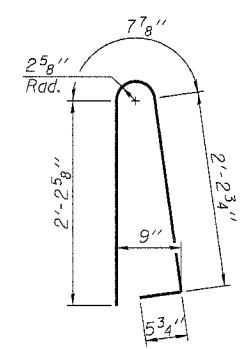
TOP PLAN



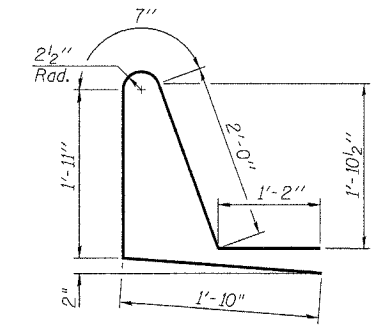
FIBERGLASS PIPE



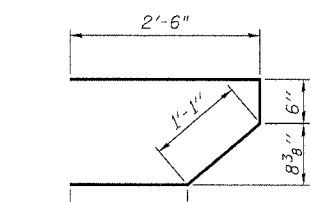
ALUMINUM TUBE



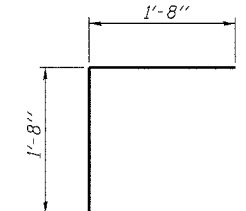
BAR d(E)



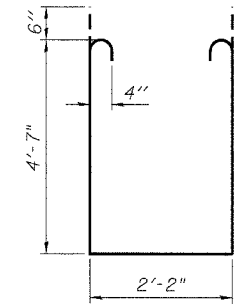
BAR d1(E)



BAR s(E)



BAR v(E)



BAR s1(E)

REVISIONS	
NAME	DATE

LIN ENGINEERING, LTD.
Consulting Engineers
Chester, Illinois
Designed By: KKH
Checked By: MTH
Date: 3/2007
Files: 044-0059.dgn

ILLINOIS DEPARTMENT OF TRANSPORTATION
SUPERSTRUCTURE DETAILS
ILLINOIS ROUTE 146 OVER
BUCK RUN CREEK
F.A.P. ROUTE 885 - SEC. (107A)B-1
JOHNSON COUNTY
STA. 628+25.00
STRUCTURE NO. 044-0059

1:45:13 PM ...\\044-0059.dgn 8/2/2007