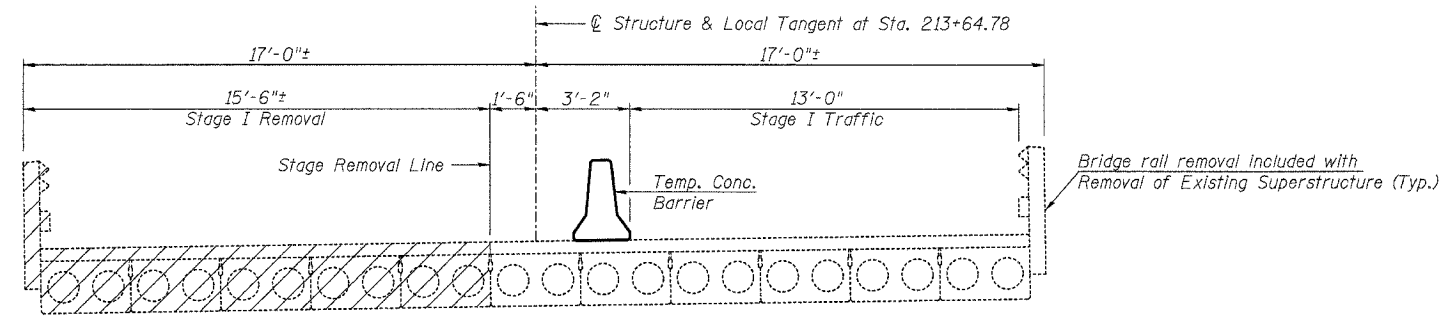
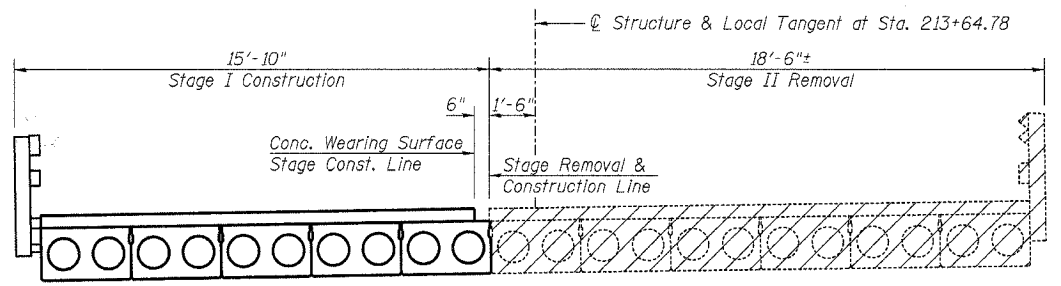


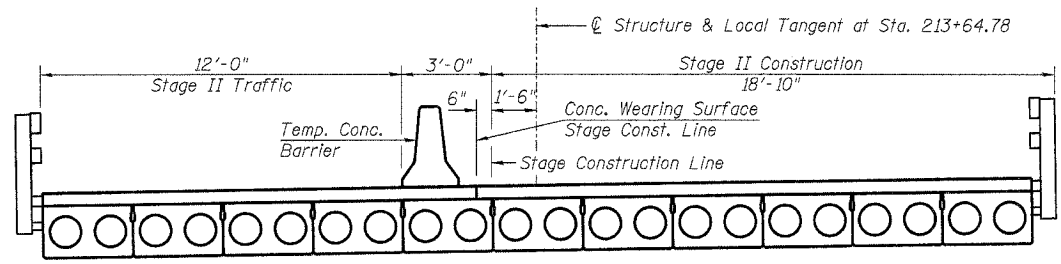
Contract # 98890



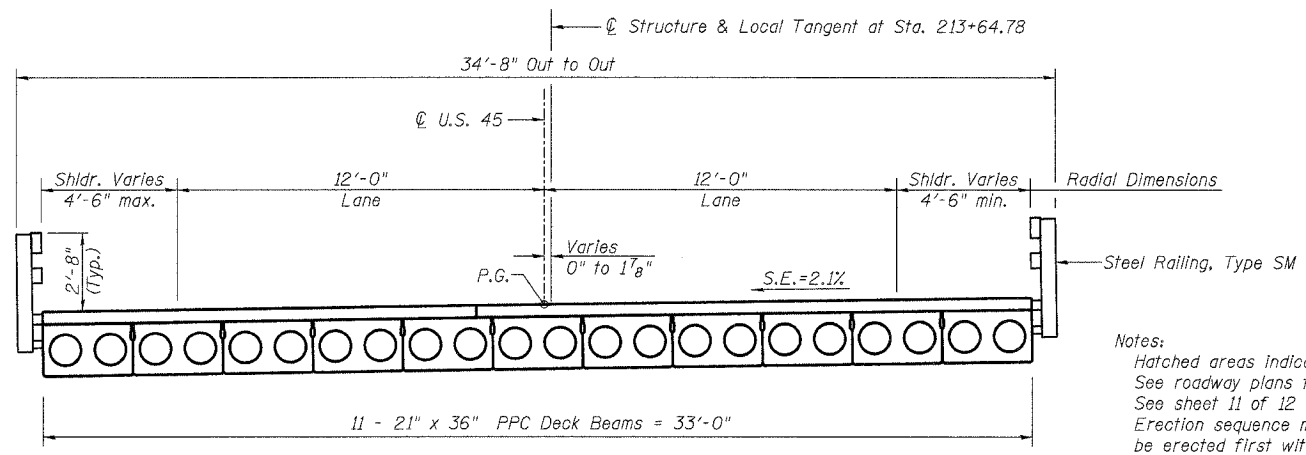
**STAGE I REMOVAL & TRAFFIC**  
(Looking South)



**STAGE I CONSTRUCTION & STAGE II REMOVAL**  
(Looking South)

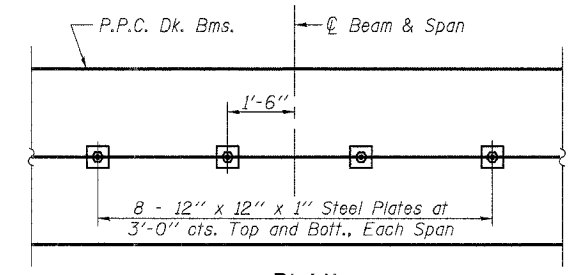


**STAGE II CONSTRUCTION & TRAFFIC**  
(Looking South)

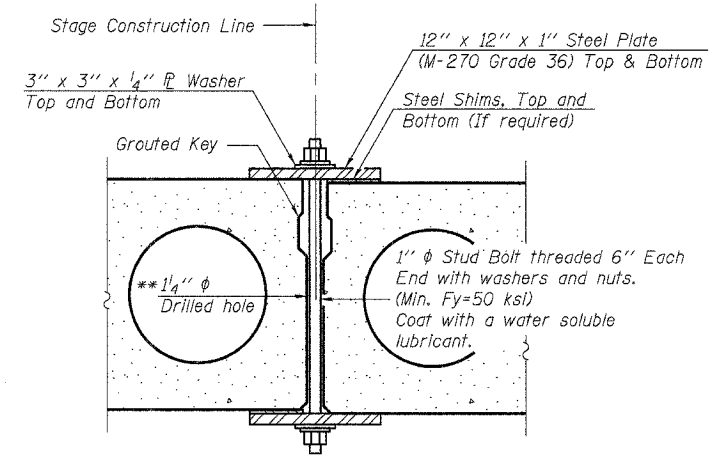


**PROPOSED CROSS SECTION**  
(Looking South)

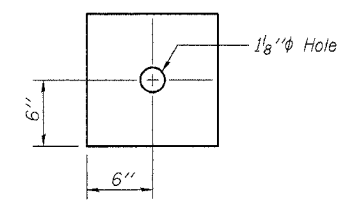
Notes:  
Hatched areas indicate removal of existing superstructure.  
See roadway plans for quantity of Temporary Concrete Barrier.  
See sheet 11 of 12 for details of Temporary Concrete Barrier.  
Erection sequence may require that deck beams at centerline be erected first with transverse ties already installed.  
All cross section dimensions at right angles to Local tangent unless noted otherwise.



**PLAN**



**SECTION**



**CLAMPING PLATE**

**SHEAR KEY CLAMPING DETAILS AT STAGE CONST. JT.**  
Cost included with Precast Prestressed Concrete Deck Beams (21" Depth).

\*\* As an alternate to the drilled holes, the Contractor may request the Fabricator to cast 2" diameter semi-circular recesses in the sides of each beam adjacent to the stage construction line. These recesses should align to form a hole at the appropriate locations for the clamping device bolts. If the Contractor elects to use this alternate, the details shall be identified on the shop drawings.

**Lin Engineering, Ltd.**  
Consulting Engineers  
Chatham, Illinois

Designed By: DLS    Checked By: WTH    Drawn By: AJP  
Date: 02/2007    File: 044-0010.DGN

REVISIONS	
NAME	DATE

ILLINOIS DEPARTMENT OF TRANSPORTATION  
**STAGE CONSTRUCTION DETAILS**  
U.S. ROUTE 45 OVER  
CAVE CREEK  
F.A.S. ROUTE 960 - SECTION 38 B-1  
JOHNSON COUNTY  
STA. 213+64.78  
STRUCTURE NO. 044-0010

8/16/2007 2:50:15 PM ...044-0010.dgn