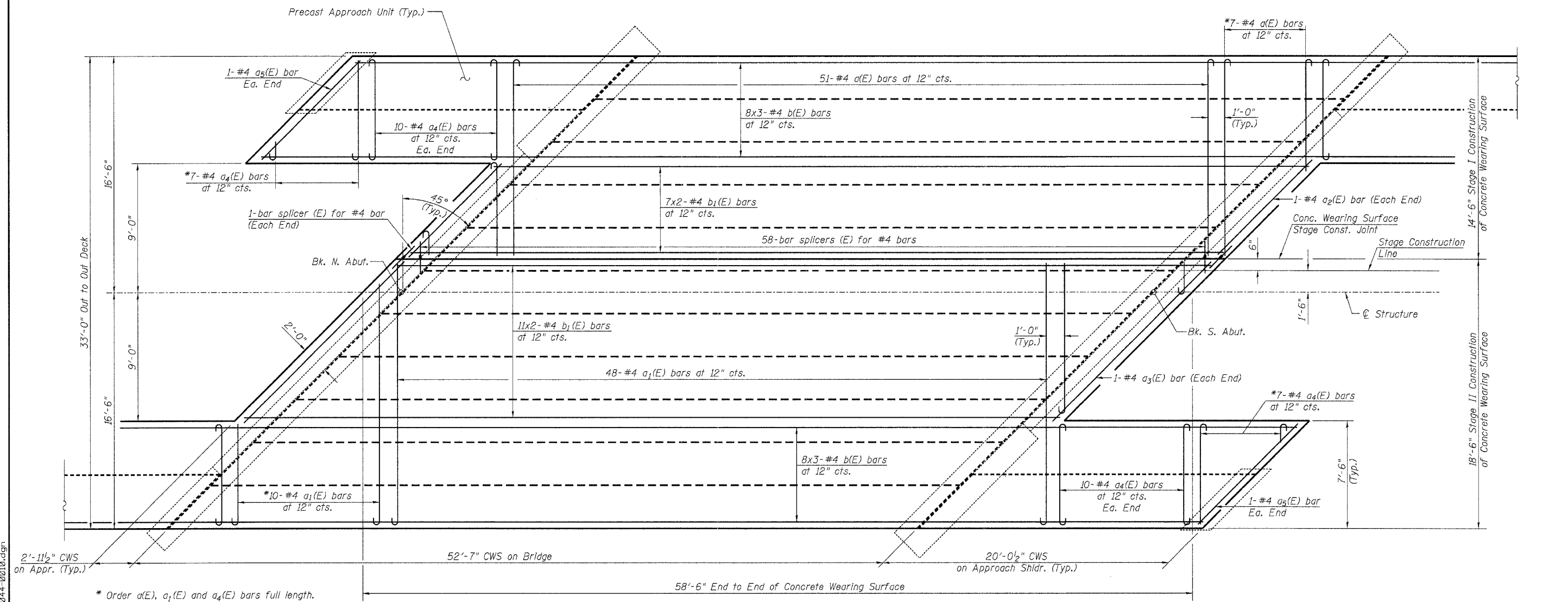
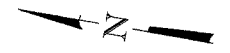


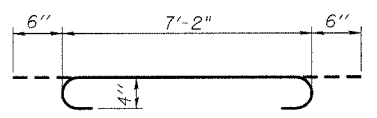
Contract # 98890

**MIN. BAR LAP**  
#4 Bar = 1'-4"

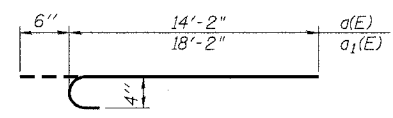


\* Order a(E), a<sub>1</sub>(E) and a<sub>4</sub>(E) bars full length. Cut to fit skew and use remainder of bars in opposite end.

**PLAN**



**BAR a<sub>4</sub>(E)**



**BARS a(E) & a<sub>1</sub>(E)**

Notes:  
For remainder of superstructure details, see Sheets 7 and 8 of 12.  
Bars indicated thus 7x2-#4 etc. indicates 7 lines of bars with 2 lengths per line.  
See Sheet 3 of 12 for shear key clamping details at Stage Construction Joint.

**LIN ENGINEERING, LTD.**  
Consulting Engineers  
Chatham, Illinois

Designed By: RLS  
Date: 03/2007

Checked By: WTH  
Date: 04-02-08

Drawn By: AJF

REVISIONS	
NAME	DATE

ILLINOIS DEPARTMENT OF TRANSPORTATION  
**SUPERSTRUCTURE**  
U.S. ROUTE 45 OVER  
CAVE CREEK  
F.A.S. ROUTE 960 - SECTION 38 B-1  
JOHNSON COUNTY  
STA. 213+64.78  
STRUCTURE NO. 044-0010

8/16/2007 2:51:31 PM ...\\044-0010.dgn