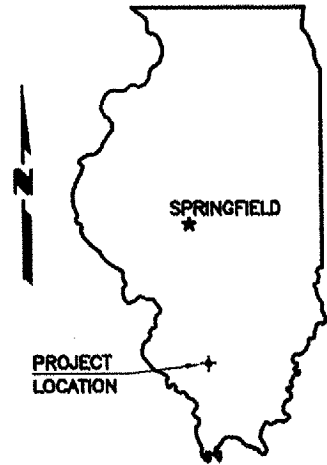


STATE OF ILLINOIS
DEPARTMENT OF TRANSPORTATION
PLANS FOR PROPOSED
HIGHWAY BRIDGE PROGRAM

TOWNSHIP ROUTE 222 (SWAN ROAD)
COUNTY UNIT ROAD DISTRICT
SECTION 02-06116-00-BR
PROJECT NO. BROS-145(32)
JOB NO. C-99-503-05
LITTLE BEAUCOUP CREEK
PERRY COUNTY

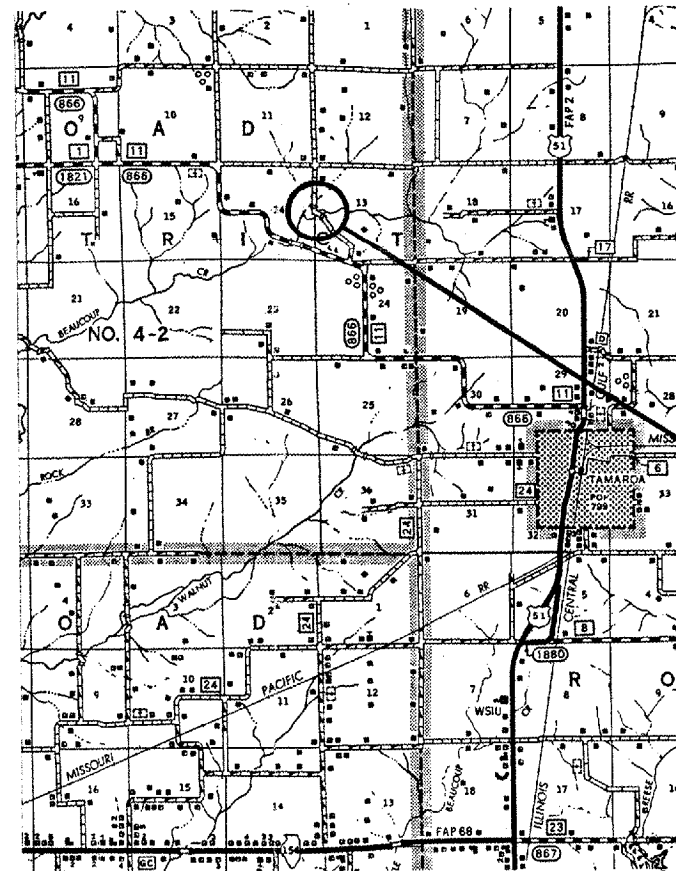
ROUTE	SECTION	COUNTY	TOTAL SHEETS	SHEET NO.
TR 222	02-06116-00-BR	PERRY	10	1
PROJECT NO. BROS-145(32)			CONTRACT NO. 99212	



INDEX OF SHEETS

1. COVER SHEET
 2. PLAN AND PROFILE
 3. GENERAL PLAN AND ELEVATION
 4. DECK BEAMS 27" x 36"
 5. DECK BEAMS 27" x 48"
 6. ABUTMENTS
 7. STEEL RAILING
 8. NAME PLATES
 9. FILE DETAILS
 10. CROSS SECTIONS
- STANDARDS 280001-03 TEMPORARY EROSION CONTROL SYSTEMS
702001-06 TRAFFIC CONTROL DEVICES
BLR-21-6 TRAFFIC CONTROL

<u>SUMMARY OF QUANTITIES</u>			
CODE NO.	PAY ITEM	UNIT	X 081-2A TOTAL
20100500	TREE REMOVAL, ACRES	ACRE	0.6
20200100	EARTH EXCAVATION	CU YD	699
20300100	CHANNEL EXCAVATION	CU YD	179
20400100	BORROW EXCAVATION	CU YD	920
25000200	SEEDING, CLASS 2	ACRE	0.6
25001000	SEEDING, CLASS 2 (SPECIAL)	ACRE	0.2
25000400	NITROGEN FERTILIZER NUTRIENT	POUND	72
25000500	PHOSPHORUS FERTILIZER NUTRIENT	POUND	72
25000600	POTASSIUM FERTILIZER NUTRIENT	POUND	72
25000700	AGRICULTURAL GROUND LIMESTONE	TON	2
25100120	MULCH, METHOD 2	TON	2
28100807	STONE DUMPED RIPRAP, CLASS A4	TON	183
40200800	AGGREGATE SURFACE COURSE, TYPE B	TON	812
50100100	REMOVAL OF EXISTING STRUCTURES	EACH	1
50200100	STRUCTURE EXCAVATION	CU YD	23
50300225	CONCRETE STRUCTURES	CU YD	19.6
50300280	CONCRETE ENCASEMENT	CU YD	2.1
50400505	PRECAST PRESTRESSED CONCRETE DECK BEAMS (27" DEPTH)	SQ FT	1366
50800105	REINFORCEMENT BARS	POUND	2280
50900205	STEEL RAILING, TYPE S1	FOOT	114
51201400	FURNISHING STEEL PILES HP10X42	FOOT	268
51202305	DRIVING PILES	FOOT	268
51500100	NAME PLATES	EACH	1
67100100	MOBILIZATION	L. SUM	1



LOCATION MAP

SCALE: 1" = 2 MILES

NET LENGTH OF IMPROVEMENT = 793.00 FT. = 0.1502 MILES

CLASSIFICATION : LOCAL ROAD
ADT : 25
DESIGN SPEED : 25 MPH



Edward W. Miller

Edward W. Miller
PROFESSIONAL ENGINEER
#062-025277
EXPIRES NOV. 30, 2009

CONTRACT NO. 99212

E. MILLER ENGINEERING, INC.
CONSULTING ENGINEERS
HARRISBURG, ILLINOIS

ILLINOIS DEPARTMENT OF TRANSPORTATION	
Approved _____	<u>Aug 15, 2007</u> <i>Douglas E. Redden</i> Perry County Engineer
Passed _____	<u>AUG. 31, 2007</u> <i>Dennis W. Hill</i> District 9 Engineer of Local Roads and Streets
Releasing for Bid Based on Limited Review _____	<u>AUG. 31, 2007</u> <i>Mary S. Kamin</i> Deputy Director of Highways, Region 5 Engineer